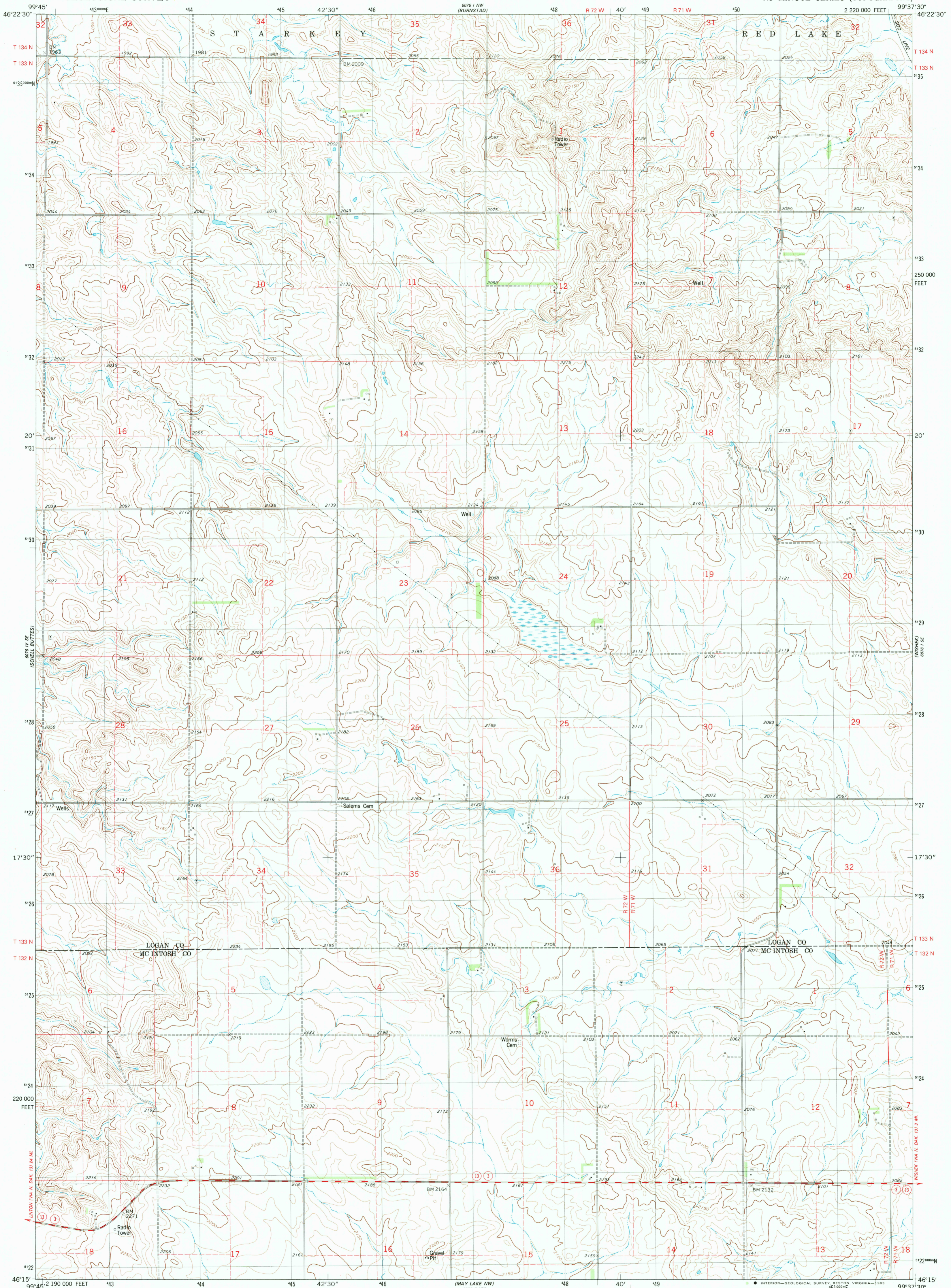


UNITED STATES
DEPARTMENT OF THE INTERIOR
GEOLOGICAL SURVEY

WISHEK SW QUADRANGLE
NORTH DAKOTA
7.5 MINUTE SERIES (TOPOGRAPHIC)



Mapped, edited, and published by the Geological Survey

Control by USGS and NOS/NOAA

Topography by photogrammetric methods from aerial photographs taken 1976. Field checked 1978. Map edited 1982

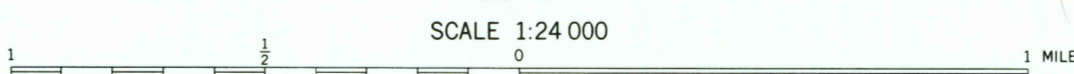
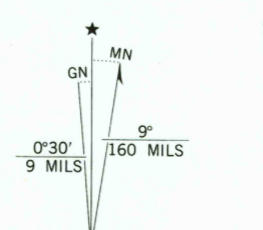
Projection and 10,000-foot grid ticks: North Dakota coordinate system, south zone (Lambert conformal conic)

1000-meter Universal Transverse Mercator grid, zone 14 1927 North American Datum

To place on the predicted North American Datum 1983 move the projection lines 6 meters north and 32 meters east as shown by dashed corner ticks

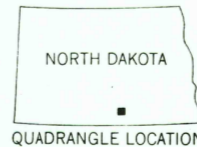
Fine red dashed lines indicate selected fence and field lines where generally visible on aerial photographs

This information is unchecked



CONTOUR INTERVAL 10 FEET

NATIONAL GEODETIC VERTICAL DATUM OF 1929



ROAD CLASSIFICATION

- Primary highway, hard surface
- Secondary highway, hard surface
- Unimproved road
- Light-duty road, hard or improved surface
- Interstate Route
- U. S. Route
- State Route

THIS MAP COMPLIES WITH NATIONAL MAP ACCURACY STANDARDS
FOR SALE BY U. S. GEOLOGICAL SURVEY, DENVER, COLORADO 80225, OR RESTON, VIRGINIA 22092
AND BY THE STATE WATER COMMISSION, BISMARCK, NORTH DAKOTA 58501
A FOLDER DESCRIBING TOPOGRAPHIC MAPS AND SYMBOLS IS AVAILABLE ON REQUEST

WISHEK SW, N. DAK.
N4615-W9937.5/7.5

1982

DMA 6076 I SW-SERIES V871

RETURN TO:
USGS NMD HISTORICAL MAP ARCHIVES

JUL 12 1983

2052