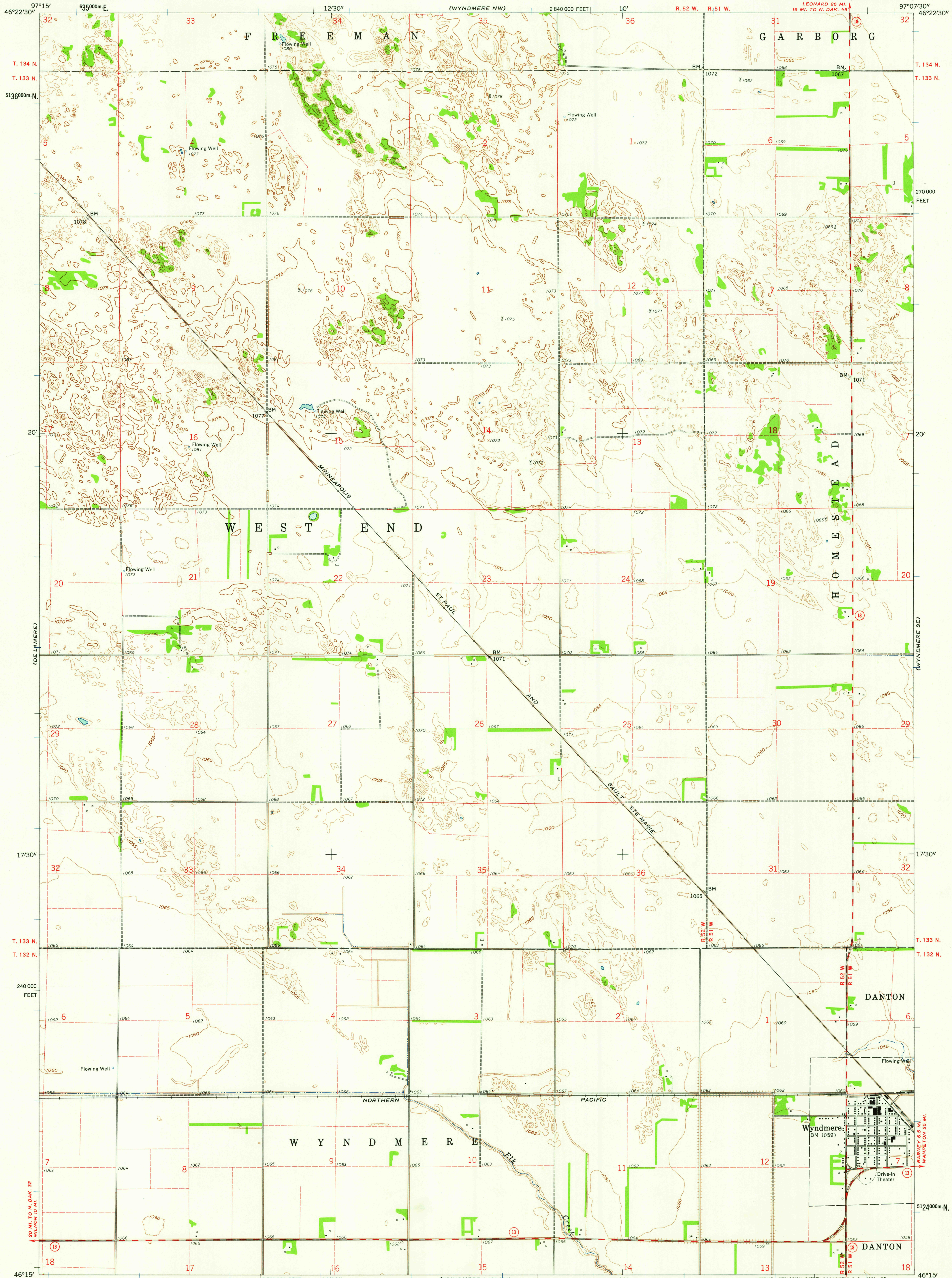


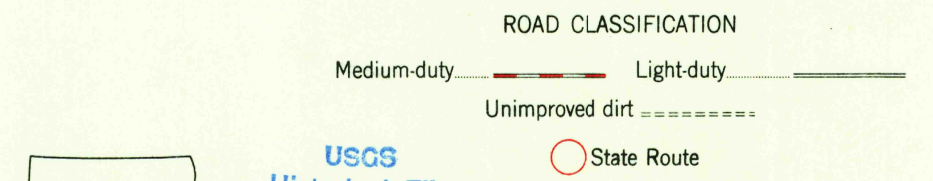
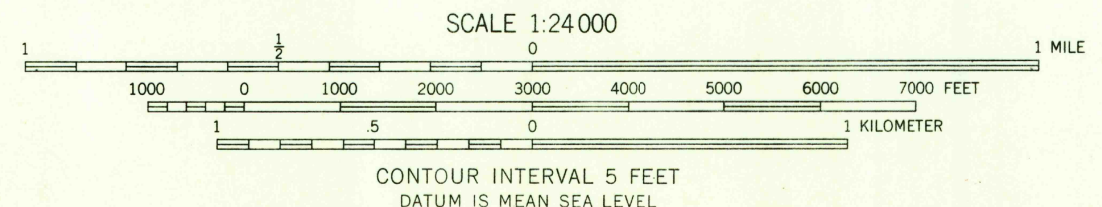
UNITED STATES
DEPARTMENT OF THE INTERIOR
GEOLOGICAL SURVEY

WYNDMERE QUADRANGLE
NORTH DAKOTA—RICHLAND CO.
7.5 MINUTE SERIES (TOPOGRAPHIC)

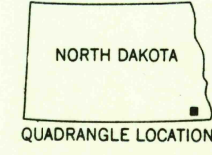


Mapped, edited, and published by the Geological Survey as part of the Department of the Interior program for the development of the Missouri River Basin Control by USGS and USC&GS. Culture and drainage in part compiled from aerial photographs taken 1952. Topography by planetable surveys 1960. Polyconic projection. 1927 North American datum 10,000-foot grid based on North Dakota coordinate system, south zone 1000-meter Universal Transverse Mercator grid ticks, zone 14, shown in blue. Fine red dashed lines indicate selected fence and field lines where generally visible on aerial photographs. This information is unchecked.

TRUE NORTH
MAGNETIC NORTH
APPROXIMATE MEAN DECLINATION, 1960



USGS
Historical File
Topographic Division



THIS MAP COMPLIES WITH NATIONAL MAP ACCURACY STANDARDS FOR SALE BY U. S. GEOLOGICAL SURVEY, DENVER 25, COLORADO OR WASHINGTON 25, D. C. AND BY THE STATE WATER CONSERVATION COMMISSION, BISMARCK, NORTH DAKOTA. A FOLDER DESCRIBING TOPOGRAPHIC MAPS AND SYMBOLS IS AVAILABLE ON REQUEST.

WYNDMERE, N. DAK.
N 4615-W 9707.5/7.5
1960

U.S.G.S.
FILE COPY
TOPOGRAPHIC DIVISION

DEC 6 1961
2075