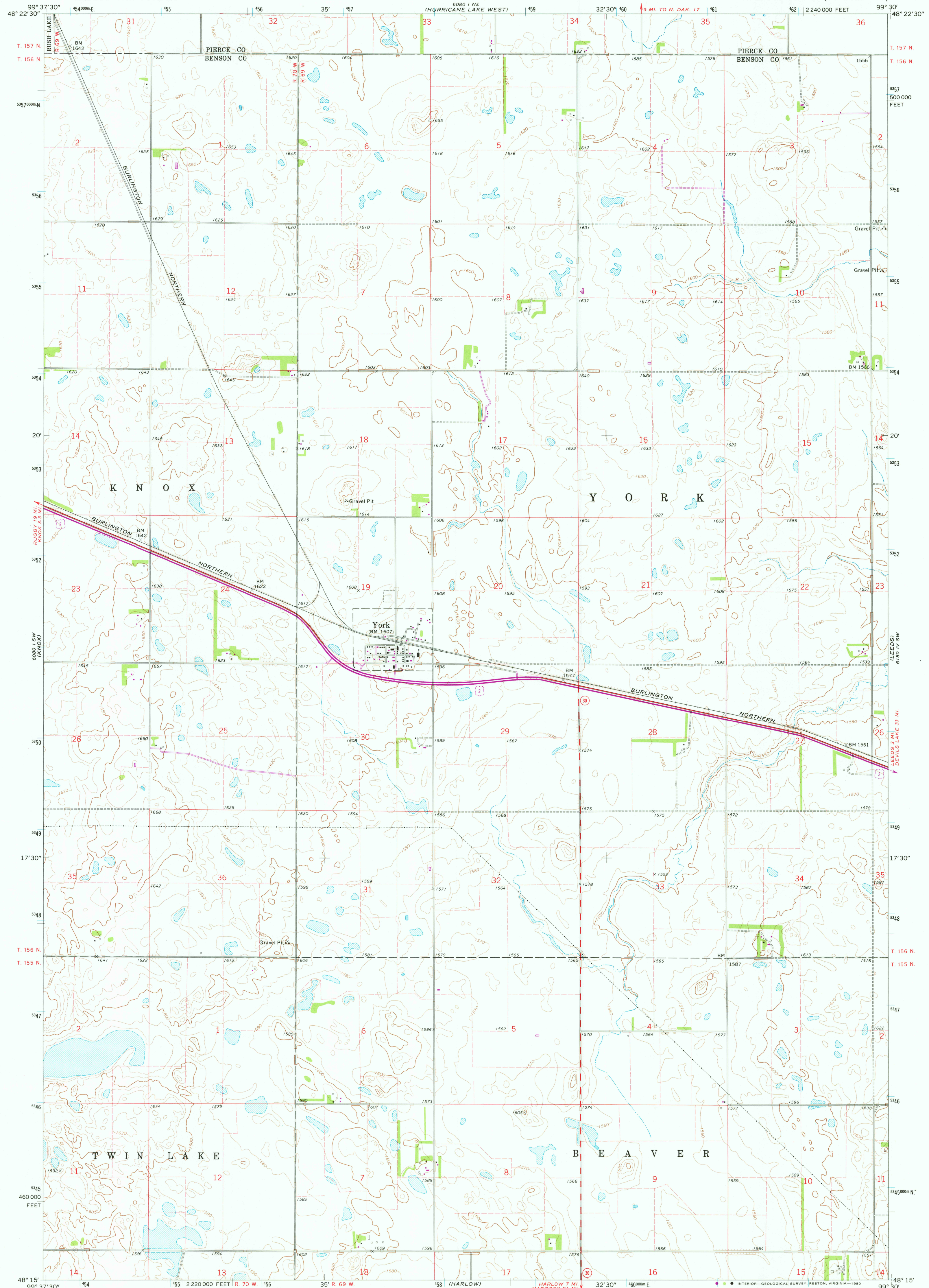


6990 1 NW
6900 1 NW
6800 1 NW

UNITED STATES
DEPARTMENT OF THE INTERIOR
GEOLOGICAL SURVEY

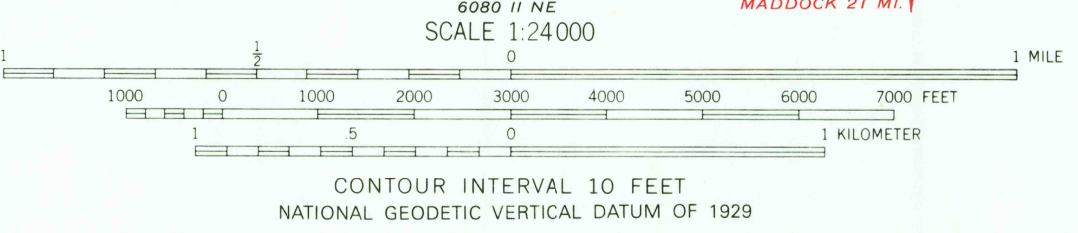
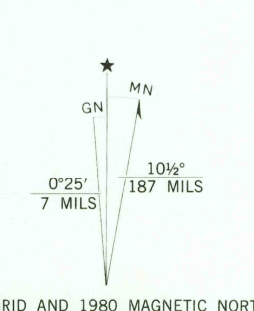
YORK QUADRANGLE
NORTH DAKOTA
7.5 MINUTE SERIES (TOPOGRAPHIC)

6180 1 NW
6190 1 NW
6200 1 NW
(HURRICANE LAKE EAST)

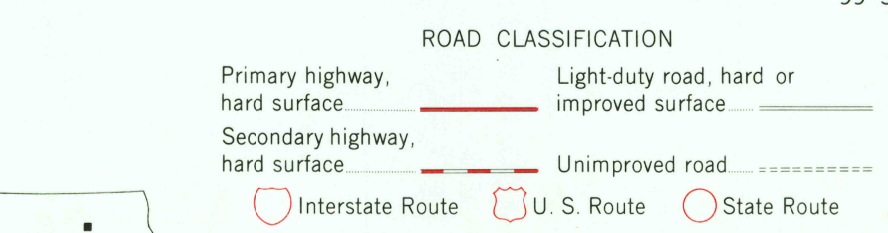


6990 1 NW
6900 1 NW
6800 1 NW

Mapped, edited, and published by the Geological Survey
Control by USGS and USC&GS
Topography by photogrammetric methods from aerial photographs taken 1968. Field checked 1971
Polyconic projection. 1927 North American datum
10,000-foot grid based on North Dakota coordinate system, north zone
1000-meter Universal Transverse Mercator grid ticks, zone 14, shown in blue
Fine red dashed lines indicate selected fence and field lines where generally visible on aerial photographs
This information is unchecked
To place on the predicted North American Datum 1983 move the projection lines 3 meters north and 30 meters east as shown by dashed corner ticks



THIS MAP COMPLIES WITH NATIONAL MAP ACCURACY STANDARDS FOR SALE BY U. S. GEOLOGICAL SURVEY, DENVER, COLORADO 80225, OR RESTON, VIRGINIA 22092 AND STATE WATER COMMISSION, BISMARCK, NORTH DAKOTA 58501 A FOLDER DESCRIBING TOPOGRAPHIC MAPS AND SYMBOLS IS AVAILABLE ON REQUEST



USGS Historical File Topographic Division
YORK, N. DAK. N4815-W9930/7.5
1971 PHOTOREVISED 1980 DMA 6080 1 SE--SERIES V871

6080 1 NE
6090 1 NE
6100 1 NE
(HURRICANE LAKE WEST)

AUG 14 1980
1850