

Fargo

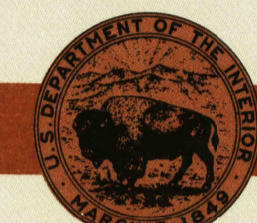
NORTH DAKOTA-MINNESOTA

1:250 000-scale metric topographic map



1 X 2 DEGREE QUADRANGLE SHOWING

- Contours and elevations in meters
- Highways, roads and other manmade structures
- Water features
- Woodland areas
- Geographic names



GEOLOGICAL SURVEY

1989/90

Produced by the United States Geological Survey
Compiled from USGS 1:100 000-scale maps dated 1985-86
Supersedes map dated 1953. Map edited 1989

North American Datum of 1983 (NAD 83). Projection and 10 000-meter grid: Universal Transverse Mercator, zone 14. 25 000-meter grid ticks: North Dakota, (south zone) and Minnesota (central zone), Coordinate Systems of 1983
The difference between NAD 83 and North American Datum of 1927 (NAD 27) for 7.5 minute intersections is given in USGS Bulletin 1875

There may be private inholdings within the boundaries of the National or State reservations shown on this map

1989 MAGNETIC DECLINATION FROM TRUE NORTH VARIES FROM 7° (12.4 MILES) WESTERLY FOR THE CENTER OF THE WEST EDGE TO 5 1/2° (69.6 MILES) WESTERLY FOR THE CENTER OF THE EAST EDGE. MEAN ANNUAL CHANGE IS 8.5 WESTERLY

CONTOUR INTERVAL 10 METERS
NATIONAL GEODETIC VERTICAL DATUM OF 1929
ELEVATIONS SHOWN TO THE NEAREST METER

THIS MAP COMPLIES WITH NATIONAL MAP ACCURACY STANDARDS

RETURN TO:
NHD HISTORICAL MAP ARCHIVES
USGS NATIONAL CENTER, MS-522
RESTON, VA 22092
29 OCT 1990

CONVERSION TABLE		ADJOINING MAPS	
Meters	Feet	1	2
1	3.28084	1	2
2	6.56168	3	4
3	9.84252	5	6
4	13.12336	7	8
5	16.40420		
6	19.68504		
7	22.96588		
8	26.24672		
9	29.52756		
10	32.80840		

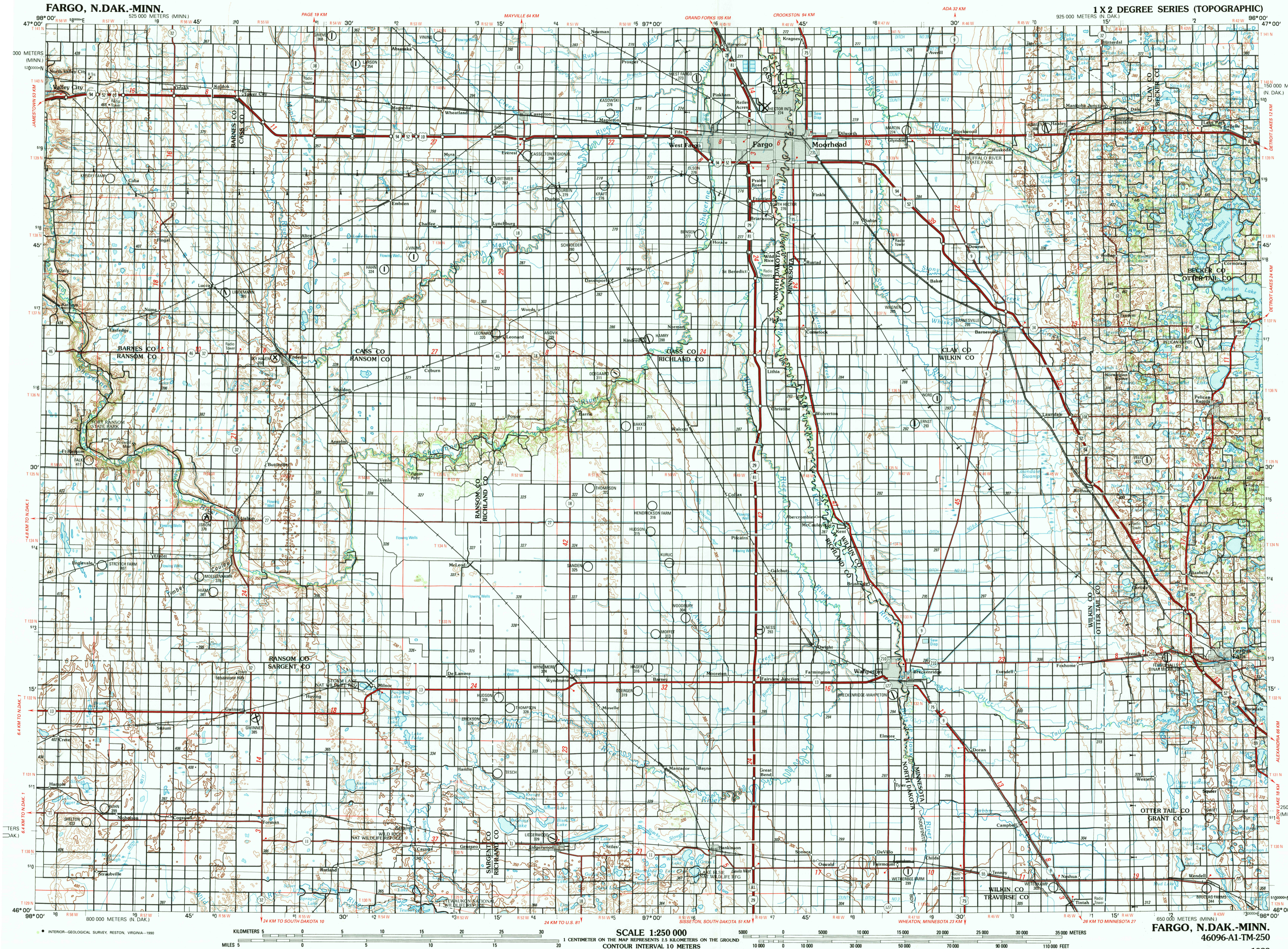
To convert meters to feet multiply by 3.28084
To convert feet to meters multiply by 0.3048

FOR SALE BY U.S. GEOLOGICAL SURVEY
DENVER, COLORADO 80225, OR RESTON, VIRGINIA 22092

Topographic Map Symbols

Dual highway, interchange	
Primary highway, hard surface	
Secondary highway, hard surface	
Light duty road, hard or improved surface	
Other road; trail	
Route marker: Interstate; U.S.; State	
Bridge: overpass; underpass	
Tunnel: road; railroad	
Railroad: standard gauge; single; multiple track	
Railroad: narrow gauge; single; multiple track	
Build-up area; locality; elevation	
Airport: runway pattern known; unknown	
National boundary	
State boundary	
County boundary	
National or State reservation boundary	
Land grant boundary	
U.S. public lands survey: range, township (surveyed)	
U.S. public lands survey: range, township (protracted)	
Powerline; pipeline: aboveground; underground	
Dam; landmark feature; landmark building	
Well; water; other spring; tank	
Cave; mine; quarry; oil platform	
Landmark area; landmark rockstack	
Distorted surface: strip mine; lava; sand	
Contours: index; intermediate; supplementary	
Bathymetric contours: index; primary	
Bathymetric contours: intermediate; supplementary	
Stream, lake: perennial; intermittent	
Rapid, large and small; falls, large and small	
Land subject to controlled inundation; marsh; swamp	
Woodland; orchard; vineyard	
Mangrove	

Figures in red denote approximate distances in kilometers between markers
A complete descriptive toponymic map is available on request



SCALE 1:250 000
1 CENTIMETER ON THE MAP REPRESENTS 2.5 KILOMETERS ON THE GROUND
CONTOUR INTERVAL 10 METERS

KILOMETERS 0 5 10 15 20 25 30 35 40 45 50 55 60 65 70 75 80 85 90 95 100
MILES 0 5 10 15 20 25 30 35 40 45 50 55 60 65 70 75 80 85 90 95 100

FARGO, N.DAK.-MINN.
46096-A1-TM-250