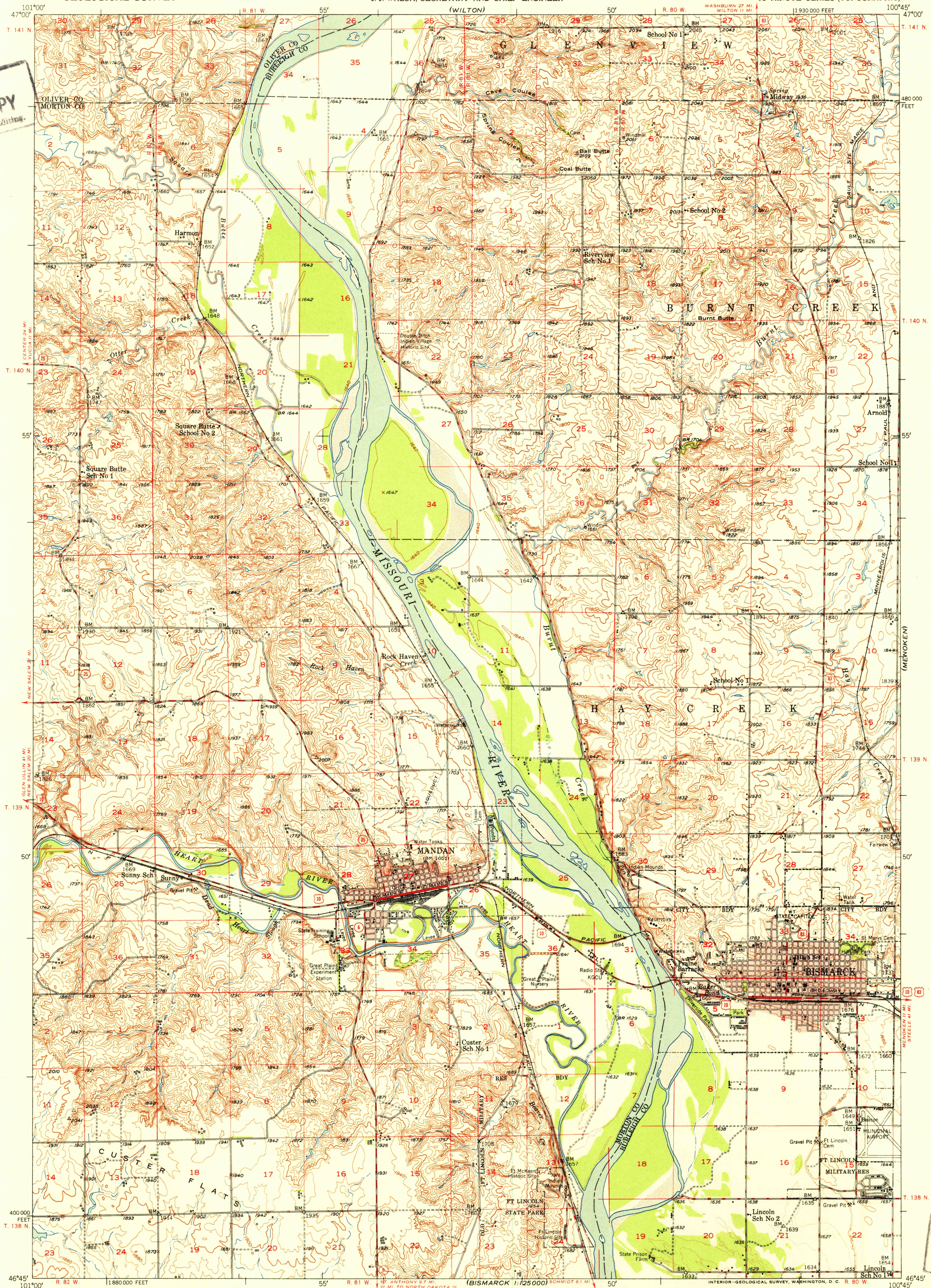


U. S. G. S.
FILE COPY
Inspection and Editing.



U. S. G. S.
FILE COPY
Inspection and Editing.

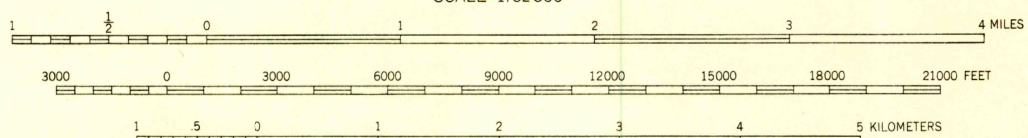
Mapped, edited, and published by the Geological Survey

Control by Missouri River Commission,
USCE, USGS, and USC&GS

Culture and drainage in part compiled from
aerial photographs taken 1949

Topography by plane-table methods 1949-1950
Polyconic projection. 1927 North American datum
10,000-foot grid based on North Dakota coordinate system,
south zone

Red tint indicates areas in which only
landmark buildings are shown



CONTOUR INTERVAL 20 FEET
DOTTED LINES REPRESENT HALF-INTERVAL CONTOURS
DATUM IS MEAN SEA LEVEL

THE SOUTH HALF OF THIS AREA IS ALSO COVERED
BY 1:25,000 SCALE MAPS OF THE MANDAN AND
BISMARCK 7 1/2 MINUTE QUADRANGLES

THIS MAP COMPLIES WITH NATIONAL MAP ACCURACY STANDARDS
FOR SALE BY U. S. GEOLOGICAL SURVEY, FEDERAL CENTER, DENVER, COLORADO OR WASHINGTON 25, D. C.
AND BY THE STATE WATER CONSERVATION COMMISSION, BISMARCK, NORTH DAKOTA
A FOLDER DESCRIBING TOPOGRAPHIC MAPS AND SYMBOLS IS AVAILABLE ON REQUEST

USGS
Historical File
Topographic Division

BISMARCK, N. DAK.
N4645-W10045/15

EDITION OF 1951