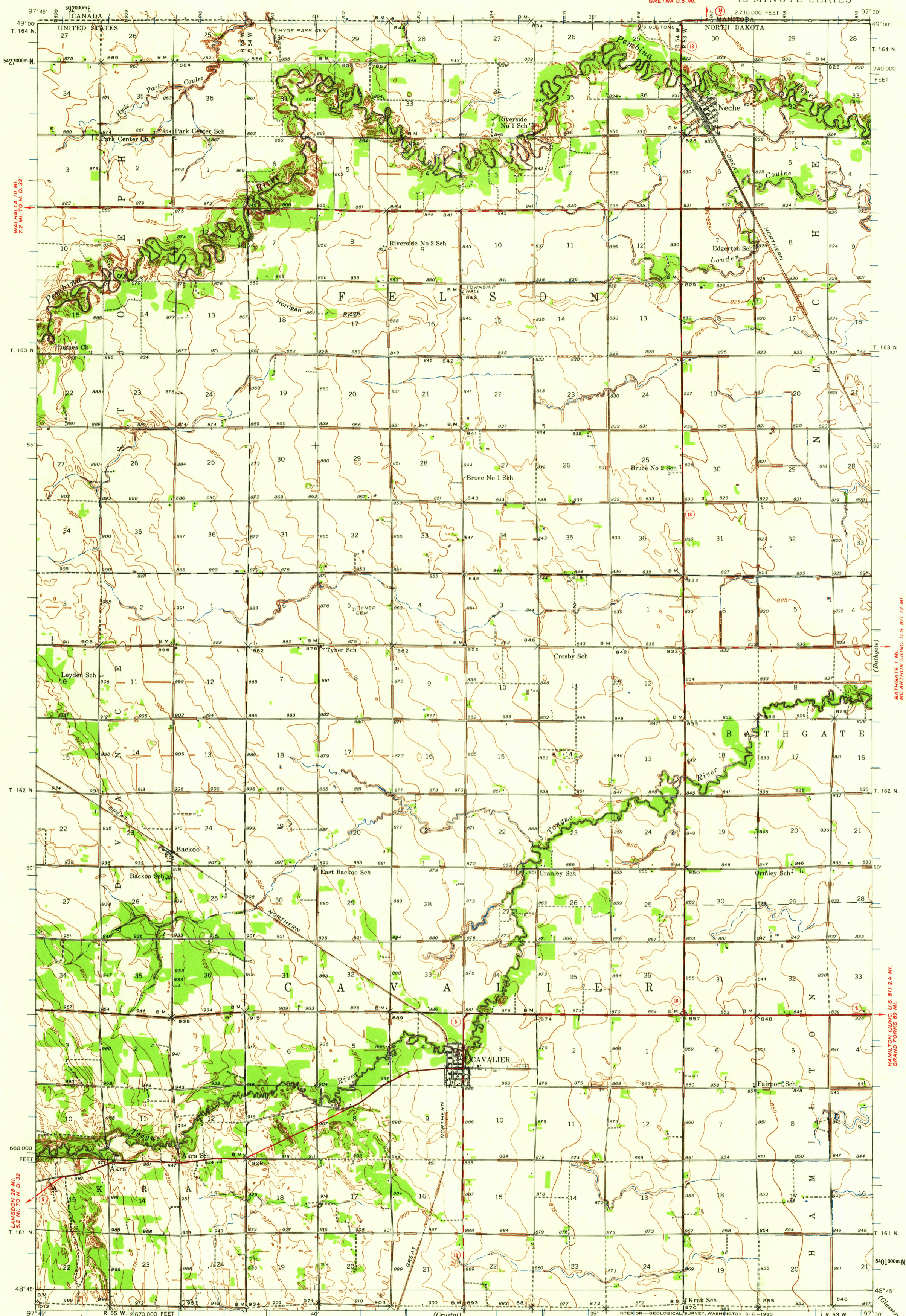


UNITED STATES
DEPARTMENT OF THE INTERIOR
GEOLOGICAL SURVEY

NORTH DAKOTA
(PEMBINA COUNTY)
CAVALIER QUADRANGLE
ROSENFELD QUANG. MANITOBA 14) 12 MI. 5-MINUTE SERIES
GREYNA 0.5 MI.

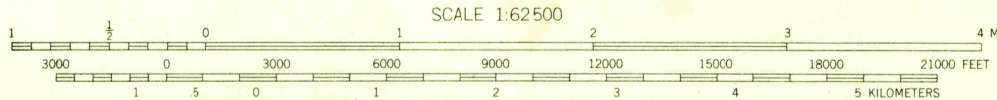


Topography by F. W. Hughes, P. L. Zumwalt,
M. E. Sojka, V. L. Hill, C. E. Harding,
William Bell, and Lewis Johnson
Surveyed in 1939

ROAD CLASSIFICATION
 Heavy-duty ——— Light-duty ———
 Medium-duty ——— Unimproved dirt ———
 State Route ○

TRUE NORTH
MAGNETIC NORTH

APPROXIMATE MEAN DECLINATION, 1939



Contour interval 5 feet
Datum is mean sea level

Polygonic projection. 1927 North American datum
10,000-foot grid based on North Dakota (North)
rectangular coordinate system
1000-meter Universal Transverse Mercator grid ticks,
zone 14, shown in blue

USGS
Historical File
Topographic Division

CAVALIER, N. DAK.
N4845-W9730/15

1939

FOR SALE BY U. S. GEOLOGICAL SURVEY, DENVER 25, COLORADO OR WASHINGTON 25, D. C.
AND BY THE STATE WATER CONSERVATION COMMISSION, BISMARCK, NORTH DAKOTA
A FOLDER DESCRIBING TOPOGRAPHIC MAPS AND SYMBOLS IS AVAILABLE ON REQUEST

U.S.G.S.
FILE COPY
TOPOGRAPHIC DIVISION

JAN 20 1960

950