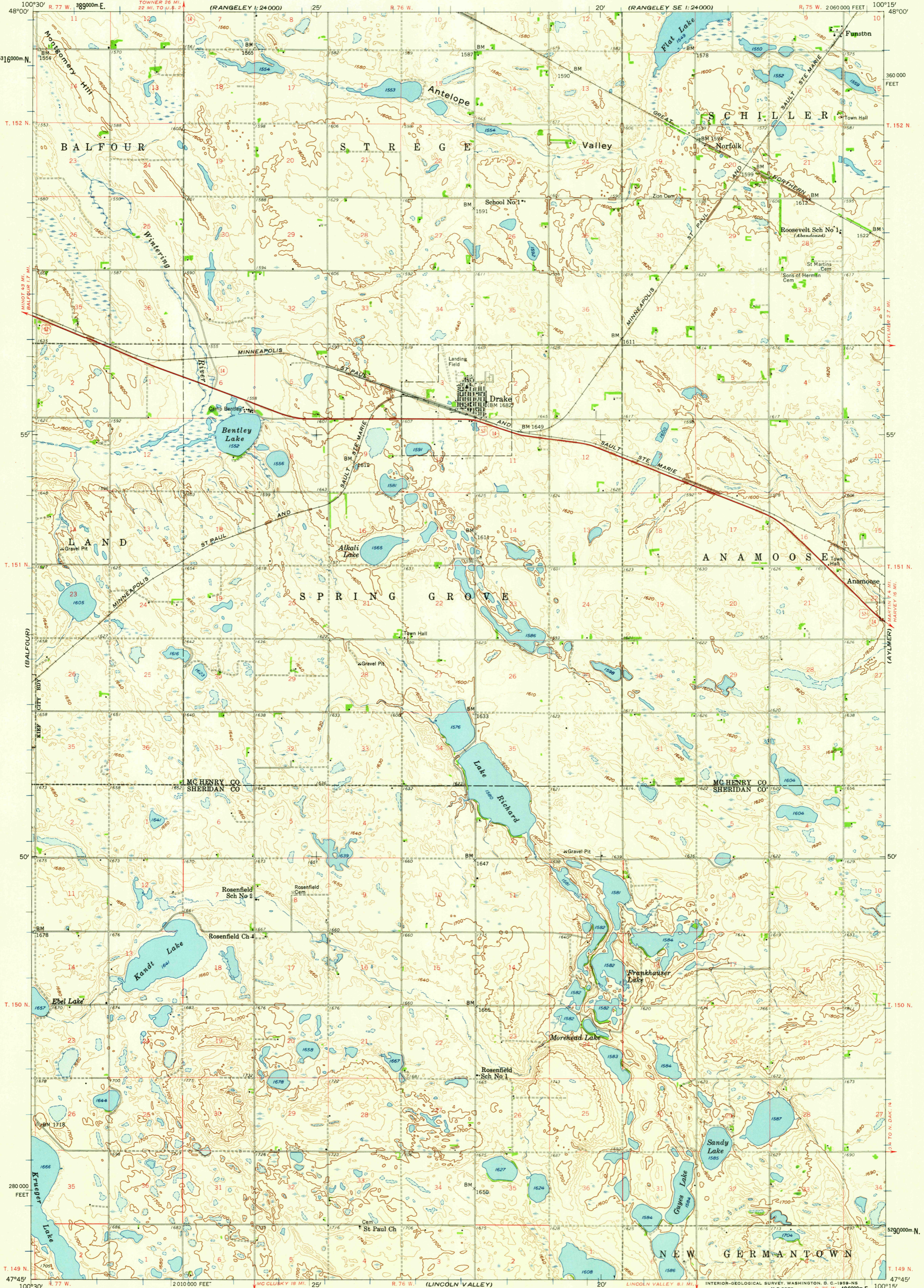
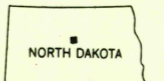
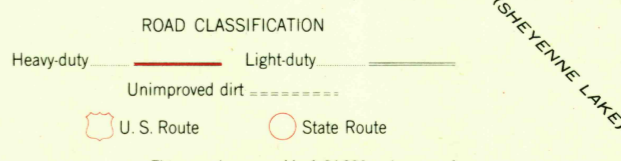
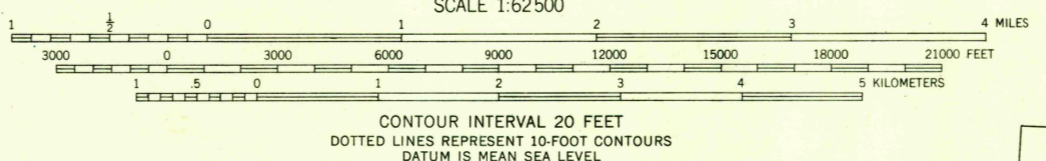


(MAP SHEET)
1:24,000

(GRID)
1:24,000



Mapped, edited, and published by the Geological Survey
Control by USGS and USC&GS
Compiled in 1959 from 1:24 000-scale maps of
Drake, Drake NW, Drake SW, and Drake SE
7.5 minute quadrangles, surveyed 1958
Topography from aerial photographs by photogrammetric methods
Aerial photographs taken 1956
Polyconic projection. 1927 North American datum
10,000-foot grid based on North Dakota coordinate system,
north zone
1000-meter Universal Transverse Mercator grid ticks,
zone 14, shown in blue



THIS MAP COMPLIES WITH NATIONAL MAP ACCURACY STANDARDS
FOR SALE BY U. S. GEOLOGICAL SURVEY, DENVER 25, COLORADO OR WASHINGTON 25, D. C.
AND BY THE STATE WATER CONSERVATION COMMISSION, BISMARCK, NORTH DAKOTA
A FOLDER DESCRIBING TOPOGRAPHIC MAPS AND SYMBOLS IS AVAILABLE ON REQUEST

This area also covered by 1:24 000-scale maps of
Drake, Drake NW, Drake SW, and Drake SE
7.5 minute quadrangles, surveyed 1958
USGS
Historical File
Topographic Division
DRAKE, N. DAK.
N4745-W10015/15
1958

U.S.G.S.
FILE COPY
TOPOGRAPHIC DIVISION

DEC 16 1959

2000