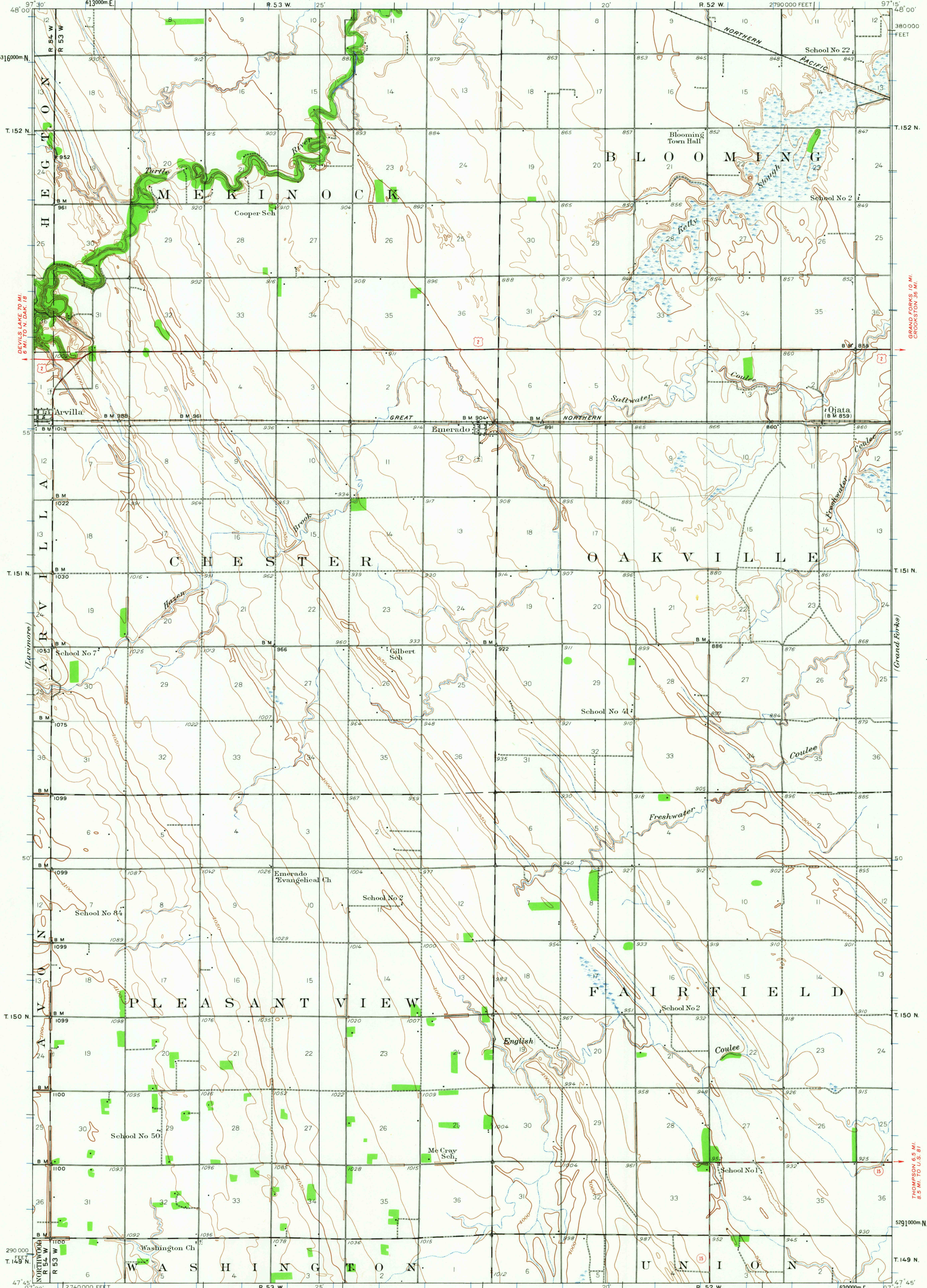


(Inkster SE)  
1:24,000

UNITED STATES  
DEPARTMENT OF THE INTERIOR  
GEOLOGICAL SURVEY

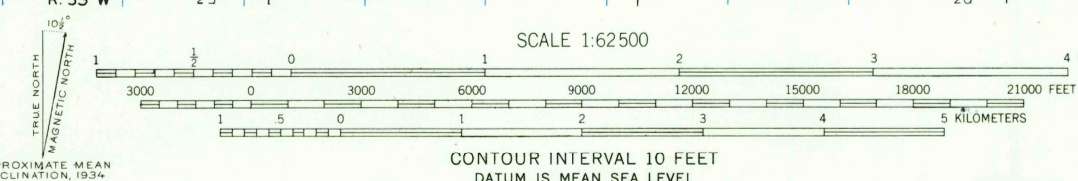
(Gilby 1:24,000)  
R. 53 W. 125'

NORTH DAKOTA  
(GRAND FORKS COUNTY)  
EMERADO QUADRANGLE  
2790000 FEET



Topography by Daniel Kennedy, E.J. Fennell, L.V. Johnson,  
R.W. Blackburn, C.E. Harding, Jr. and C.T. Galloway  
Surveyed in 1934

**ROAD CLASSIFICATION**  
Heavy-duty ——— Light-duty ———  
Medium-duty ——— Unimproved dirt ———  
U.S. Route ——— State Route ———



INTERIOR—GEOLOGICAL SURVEY WASHINGTON, D. C.—1968  
Polyconic projection, 1927 North American datum  
10,000-foot grid based on North Dakota (North)  
rectangular coordinate system  
1000-meter Universal Transverse Mercator grid ticks,  
zone 14, shown in blue

FOR SALE BY U.S. GEOLOGICAL SURVEY, DENVER, COLORADO 80225 OR WASHINGTON, D. C. 20242  
AND BY STATE WATER COMMISSION, BISMARCK, NORTH DAKOTA 58501  
A FOLDER DESCRIBING TOPOGRAPHIC MAPS AND SYMBOLS IS AVAILABLE ON REQUEST

U.S.G.S.  
FILE COPY  
TOPOGRAPHIC DIVISION

EMERADO, N. DAK.  
N4745—W9715/15  
1934

USGS  
Historical File  
Topographic Division

7695  
JUN 20 1968