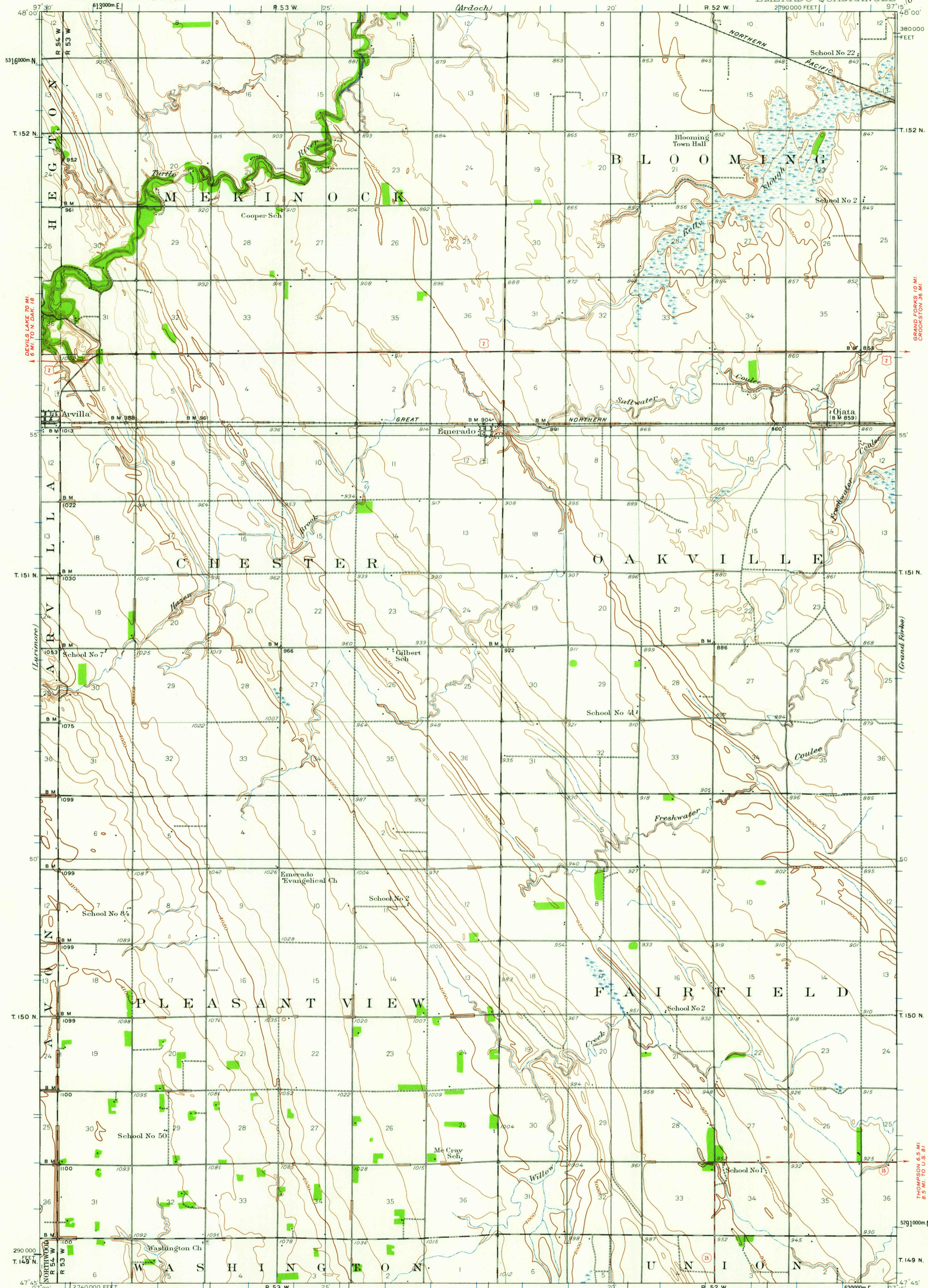


UNITED STATES
DEPARTMENT OF THE INTERIOR
GEOLOGICAL SURVEY

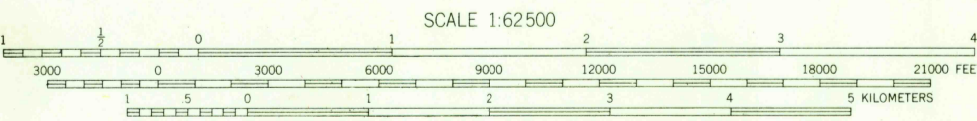
NORTH DAKOTA
(GRAND FORKS COUNTY)
EMERADO QUADRANGLE
2790000 FEET



Topography by Daniel Kennedy, E.J. Fennell, L.V. Johnson,
R.W. Blackburn, C.E. Harding Jr. and C.T. Galloway
Surveyed in 1934.

ROAD CLASSIFICATION
 Heavy-duty ——— Light-duty ———
 Medium-duty ——— Unimproved dirt ———
 U.S. Route State Route

APPROXIMATE MEAN
DECLINATION, 1934



SCALE 1:62500

CONTOUR INTERVAL 10 FEET
DATUM IS MEAN SEA LEVEL

INTERIOR—GEOLOGICAL SURVEY, WASHINGTON, D. C.—1960
 Polyconic projection. 1927 North American datum
 10,000-foot grid based on North Dakota (North)
 rectangular coordinate system
 1000-meter Universal Transverse Mercator grid ticks,
 zone 14, shown in blue

USGS
Historical File
Topographic Division

EMERADO, N. DAK.
N4745—W9715/15

1934

FOR SALE BY U.S. GEOLOGICAL SURVEY, DENVER 25, COLORADO OR WASHINGTON 25, D. C.
AND BY THE STATE WATER CONSERVATION COMMISSION, BISMARCK, NORTH DAKOTA
A FOLDER DESCRIBING TOPOGRAPHIC MAPS AND SYMBOLS IS AVAILABLE ON REQUEST

U.S.G.S.
FILE COPY
TOPOGRAPHIC DIVISION

MAY 17 1960

6190