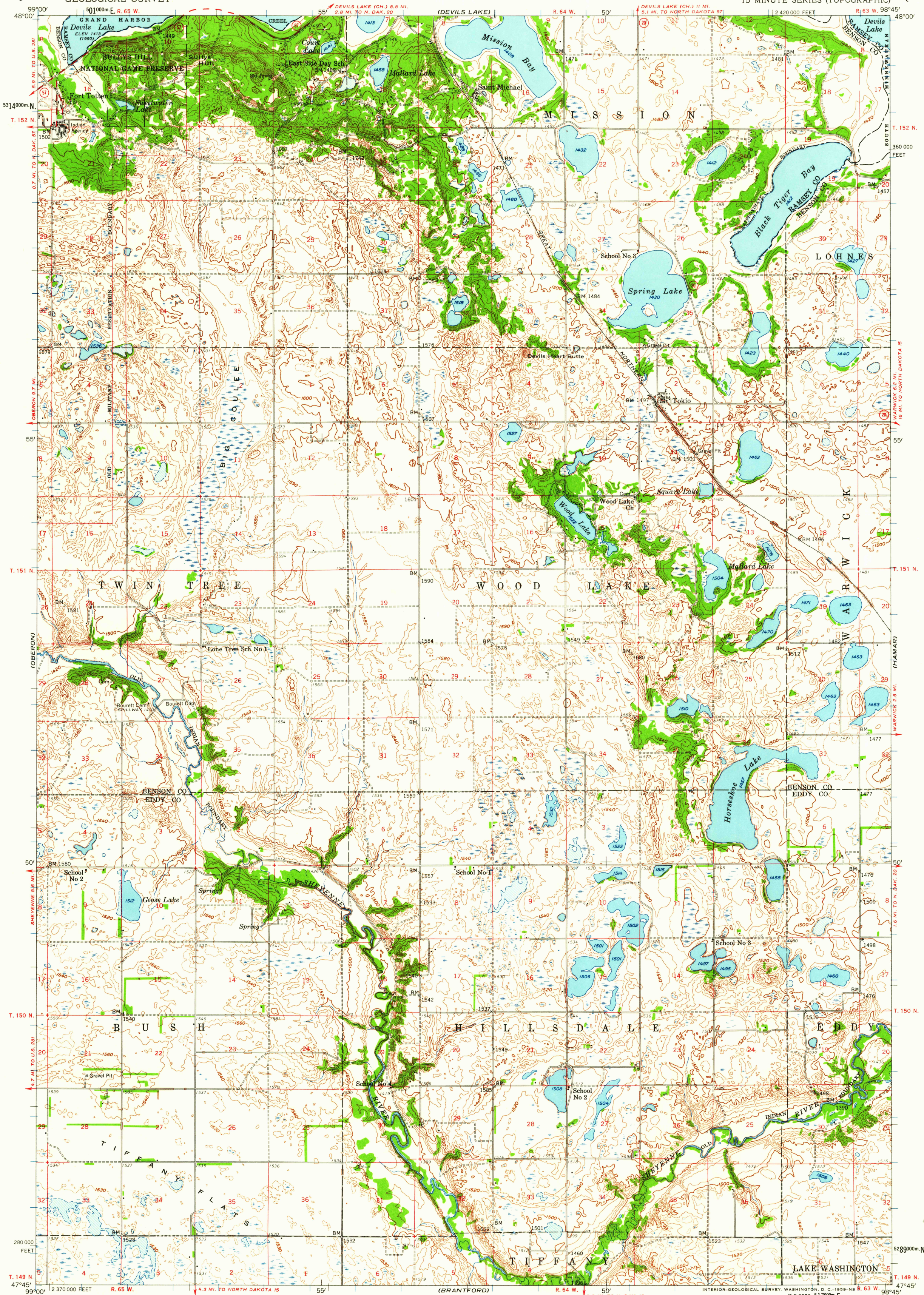


UNITED STATES
DEPARTMENT OF THE INTERIOR
GEOLOGICAL SURVEY

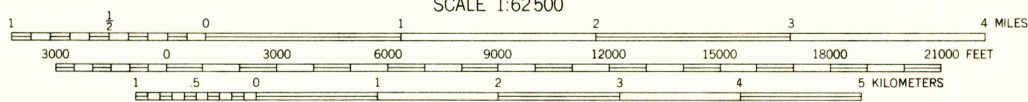
TOKIO QUADRANGLE
NORTH DAKOTA
15 MINUTE SERIES (TOPOGRAPHIC)



Mapped, edited, and published by the Geological Survey
Control by USGS and USC&GS

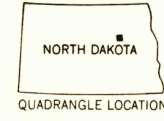
Compiled in 1959 from 1:24 000-scale maps of Tokio,
Fort Totten, Tokio SW, and Horsehoe Lake 7.5 minute
quadrangles, surveyed 1950-1951
Topography from aerial photographs by photogrammetric methods
and by planetable surveys. Aerial photographs taken 1941-1949

Polycyclic projection, 1927 North American datum
10,000-foot grid based on North Dakota coordinate system,
north zone
1000-meter Universal Transverse Mercator grid ticks,
zone 14, shown in blue



TRUE NORTH
MAGNETIC NORTH
APPROXIMATE MEAN
DECLINATION, 1951

THIS MAP COMPLIES WITH NATIONAL MAP ACCURACY STANDARDS
FOR SALE BY U. S. GEOLOGICAL SURVEY, DENVER 25, COLORADO OR WASHINGTON 25, D. C.
AND BY THE STATE WATER CONSERVATION COMMISSION, BISMARCK, NORTH DAKOTA
A FOLDER DESCRIBING TOPOGRAPHIC MAPS AND SYMBOLS IS AVAILABLE ON REQUEST



ROAD CLASSIFICATION
Medium-duty ——— Light-duty ———
Unimproved dirt ———
State Route ———

This area also covered by 1:24 000-scale maps of
Tokio 1950, Fort Totten 1951, Tokio SW 1950,
and Horsehoe Lake 1951. 7.5 minute quadrangles
and Horsehoe Lake 1951.

TOKIO, N. DAK.
N4745-W9845/15
1951

USGS
Historical File
Topographic Division

U.S.G.S.
FILE COPY
TOPOGRAPHIC DIVISION

DEC - 4 1959

2040