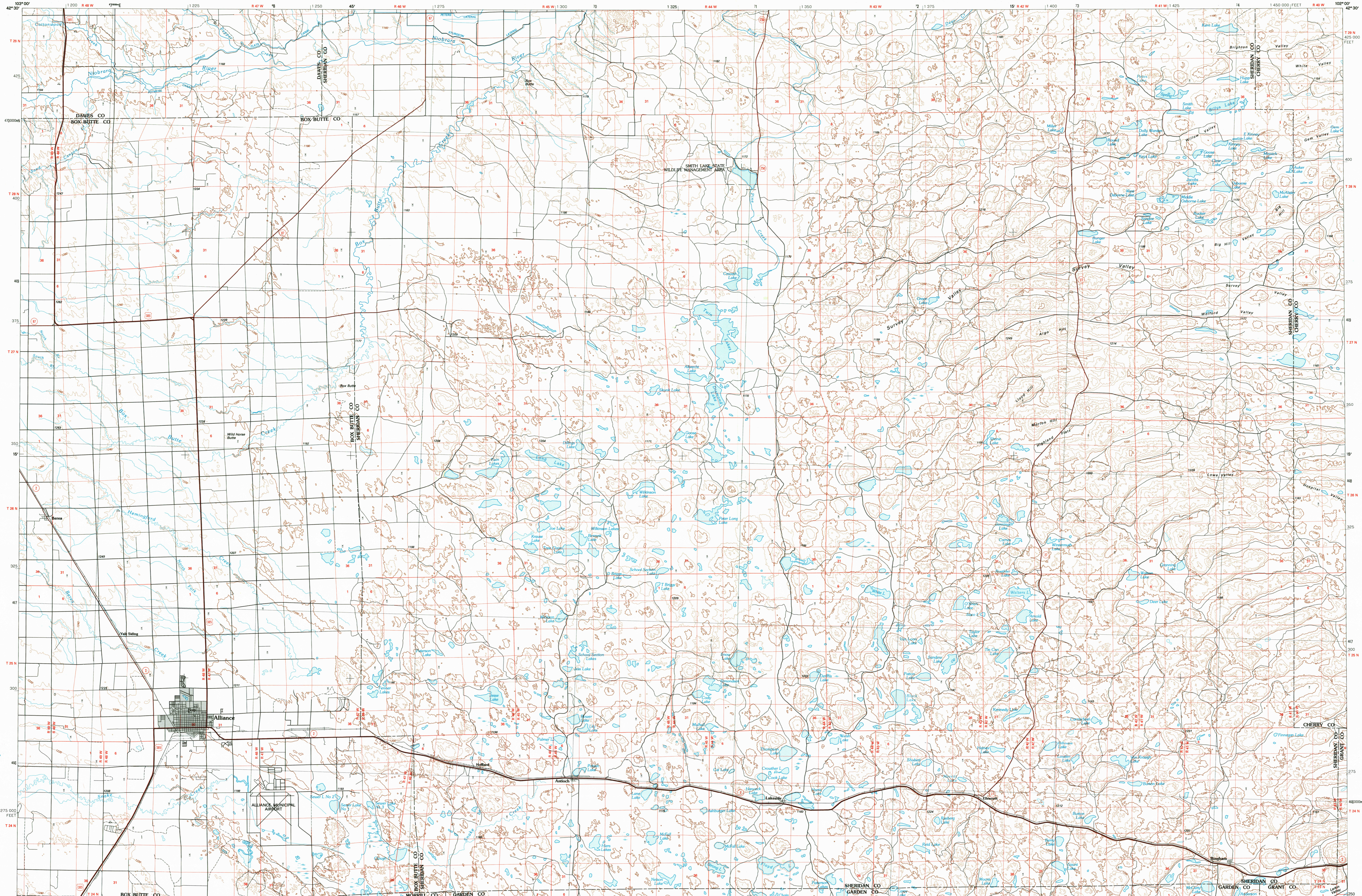


ALLIANCE, NEBRASKA

30 X 60 MINUTE SERIES (TOPOGRAPHIC)



# Alliance

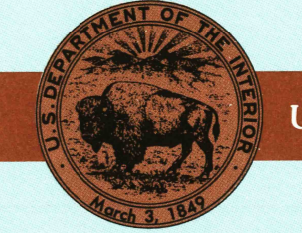
NEBRASKA

1:100 000-scale metric topographic map



30 X 60 MINUTE QUADRANGLE SHOWING

- Contours and elevations in meters
- Highways, roads and other manmade structures
- Water features
- Woodland areas
- Geographic names



U. S. GEOLOGICAL SURVEY

1985 PHOTOINSPECTED 1987

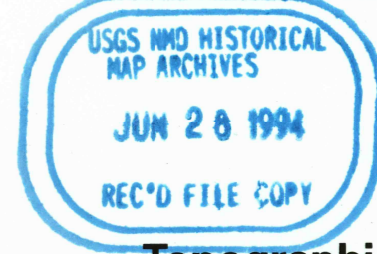
Produced by the United States Geological Survey  
 Compiled from USGS 1:24 000 and 1:62 500-scale topographic maps dated 1946-1976. Planimetry revised from aerial photographs taken 1983-84 and other source data. Revised information not field checked. Map edited 1985  
 1927 North American Datum (NAD 27). Projection and 10 000-meter grid: Universal Transverse Mercator, zone 13 25 000-foot ticks: Nebraska coordinate system, north zone  
 The difference between NAD 27 and North American Datum of 1983 (NAD 83) is too small to show at this scale. The values of the shift between the datums for 7.5-minute intersections are given in USGS Bulletin 1875  
 There may be private inholdings within the boundaries of the National or State reservations shown on this map  
 Map photoinspected using 1989 photographs  
 No major culture or drainage changes found

CONTOUR INTERVAL 20 METERS NATIONAL GEODETIC VERTICAL DATUM OF 1929 ELEVATIONS SHOWN TO THE NEAREST METER

THIS MAP COMPLIES WITH NATIONAL MAP ACCURACY STANDARDS

CONVERSION TABLE		DECLINATION DIAGRAM		ADJOINING MAPS				
Meters	Feet			1	2	3		
2	6.5617			4	5			
4	13.1234			6	7	8		
6	19.6851			1	2	3		
8	26.2468			4	5	6		
10	32.8085			7	8	9		
To convert meters to feet multiply by 3.2808				To convert feet to meters multiply by 0.3048				
UTM grid convergence (GM) and 1983 magnetic declination (M) at center of map				Diagram is approximate				
				1 Crawford				
				2 Gordon				
				3 Cody				
				4 Hemingford				
				5 Mullen				
				6 Scottsbluff				
				7 Crescent Lake				
				8 Arthur				

FOR SALE BY U.S. GEOLOGICAL SURVEY DENVER, COLORADO 80225, OR RESTON, VIRGINIA 22092



### Topographic Map Symbols

- Primary highway, hard surface
- Secondary highway, hard surface
- Light duty road, principal street, hard or improved surface
- Other road or street; trail
- Route marker: Interstate, U.S., State
- Railroad: standard gage; narrow gage
- Bridge, overpass, underpass
- Tunnel: road, railroad
- Built up area; locality, elevation
- Airport; landing field; landing strip
- National boundary
- State boundary
- County boundary
- Civil township boundary
- National or State reservation boundary
- Land grant boundary
- U.S. public lands survey: range, township, section
- Range, township, section line: protracted
- Power transmission line; pipeline
- Dam; dam with lock
- Cemetery; building
- Windmill; water well; spring
- Mine shaft; add or cave; mine, quarry; gravel pit
- Campground; picnic area; U.S. location monument
- Ruins; cliff dwelling
- Distorted surface: strip mine, lava, sand
- Contours: index; intermediate; supplementary
- Bathymetric contours: index; intermediate
- Stream, lake: perennial; intermittent
- Rapids, large and small; falls, large and small
- Area to be submerged; marsh, swamp
- Land subject to controlled inundation; woodland
- Scrub; mangrove
- Orchard; vineyard

A pamphlet describing topographic maps is available on request

SCALE 1:100 000  
1 CENTIMETER ON THE MAP REPRESENTS 1 KILOMETER ON THE GROUND  
CONTOUR INTERVAL 20 METERS

ALLIANCE, NEBRASKA  
42102-A1-TM-100

1985 PHOTOINSPECTED 1987