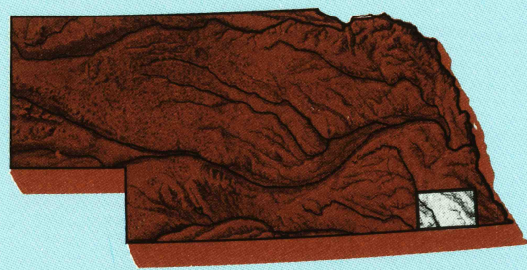


Beatrice

NEBRASKA-KANSAS

1:100 000-scale metric
topographic map



30 X 60 MINUTE QUADRANGLE
SHOWING

- Contours and elevations in meters
- Highways, roads and other manmade structures
- Water features
- Woodland areas
- Geographic names



GEOLOGICAL SURVEY

1986
PHOTOINSPECTED 1991

Produced by the United States Geological Survey
Compiled from USGS 1:24 000-scale topographic maps dated 1957-1980. Partially revised from aerial photographs taken 1981-82 and other source data. Revised information not field checked.
Map edited 1986.

Projection and 10 000-meter grid, zone 14
Universal Transverse Mercator
25 000-foot grid ticks based on Nebraska coordinate system, south zone. 1927 North American Datum
To place on the predicted North American Datum 1983 move the projection lines 3 meters north and 35 meters east. There may be private inholdings within the boundaries of the National or State reservations shown on this map.

Map photoinspected using 1988 and 1991 photographs
No major culture or drainage changes found

CONTOUR INTERVAL 10 METERS
NATIONAL GEODETIC VERTICAL DATUM OF 1929
ELEVATIONS SHOWN TO THE NEAREST METER

THIS MAP COMPLIES WITH NATIONAL MAP ACCURACY STANDARDS

CONVERSION TABLE		DECLINATION DIAGRAM		ADJOINING MAPS				
Meters	Feet			1	2	3		
1	3.2808		M GN	4	5			
2	6.5616							
3	9.8424							
4	13.1232							
5	16.4040							
6	19.6850							
7	22.9659							
8	26.2467							
9	29.5276							
10	32.8084							
To convert meters to feet multiply by 3.2808		UTM grid convergence (GN) and 1986 magnetic declination (M) at center of map		1 York	2 Lincoln	3 Nebraska City	4 Fairbury	
To convert feet to meters multiply by 0.3048		Diagram is approximate		5 Falls City	6 Concordia	7 Blue Rapids	8 Atchison	

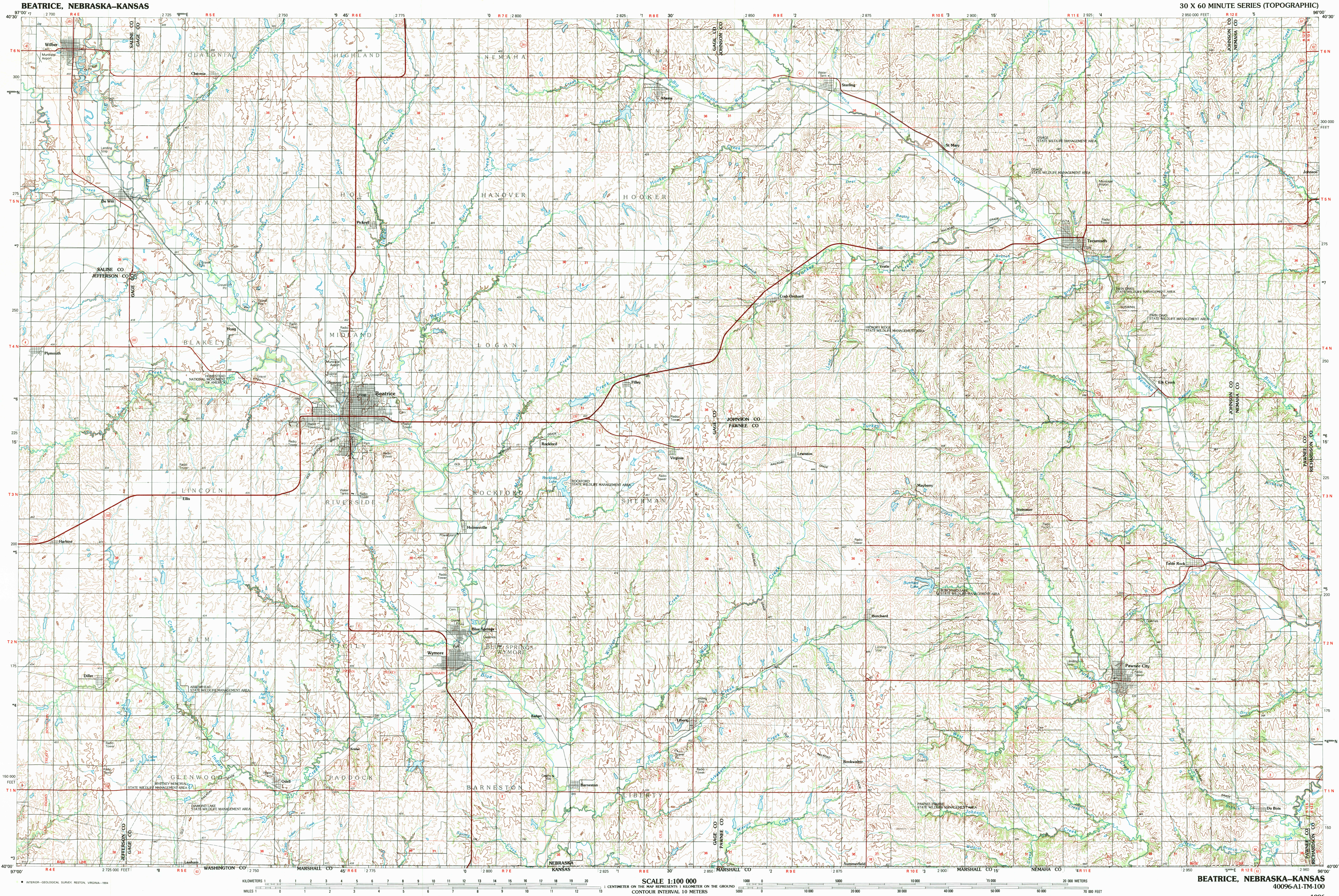
FOR SALE BY U. S. GEOLOGICAL SURVEY, DENVER, COLORADO 80225
OR RESTON, VIRGINIA 22092

Topographic Map Symbols

Primary highway, hard surface	
Secondary highway, hard surface	
Light duty road, principal street, hard or improved surface	
Cover road or gravel road	
Route marker: Interstate, U. S. State	
Railroad: standard gage; narrow gage	
Bridge: overpass; underpass	
Tunnel: road; railroad	
Built up area, locality, elevation	
Airport; landing field; landing strip	
National boundary	
State boundary	
County boundary	
National or State reservation boundary	
Land grant boundary	
U. S. public lands survey: range, township, section	
Range, township, section line: projected	
Power transmission line: pipeline	
Dam; dam with lock	
Cemetery; building	
Woods; water with spring	
Mine shaft; salt or cave; mine, quarry; gravel pit	
Campground; picnic area; U. S. location monument	
Ruins; cliff dwelling	
Distorted surface: strip mine, lava; sand	
Contours: index; intermediate; supplementary	
Bathymetric contours: index; intermediate	
Stream, lake; perennial; intermittent	
Rapids, large and small; falls, large and small	
Area to be submerged; marsh, swamp	
Land subject to controlled inundation; woodland	
Scrub; mangrove	
Orchard; vineyard	

A pamphlet describing topographic maps is available on request

RETURNS TO:
USGS AND HISTORICAL MAP ARCHIVES



BEATRICE, NEBRASKA-KANSAS
40096-A1-TM-100

SCALE 1:100 000
1 CENTIMETER ON THE MAP REPRESENTS 1 KILOMETER ON THE GROUND
CONTOUR INTERVAL 10 METERS

• INTERIOR—GEOLOGICAL SURVEY, RESTON, VIRGINIA—1984