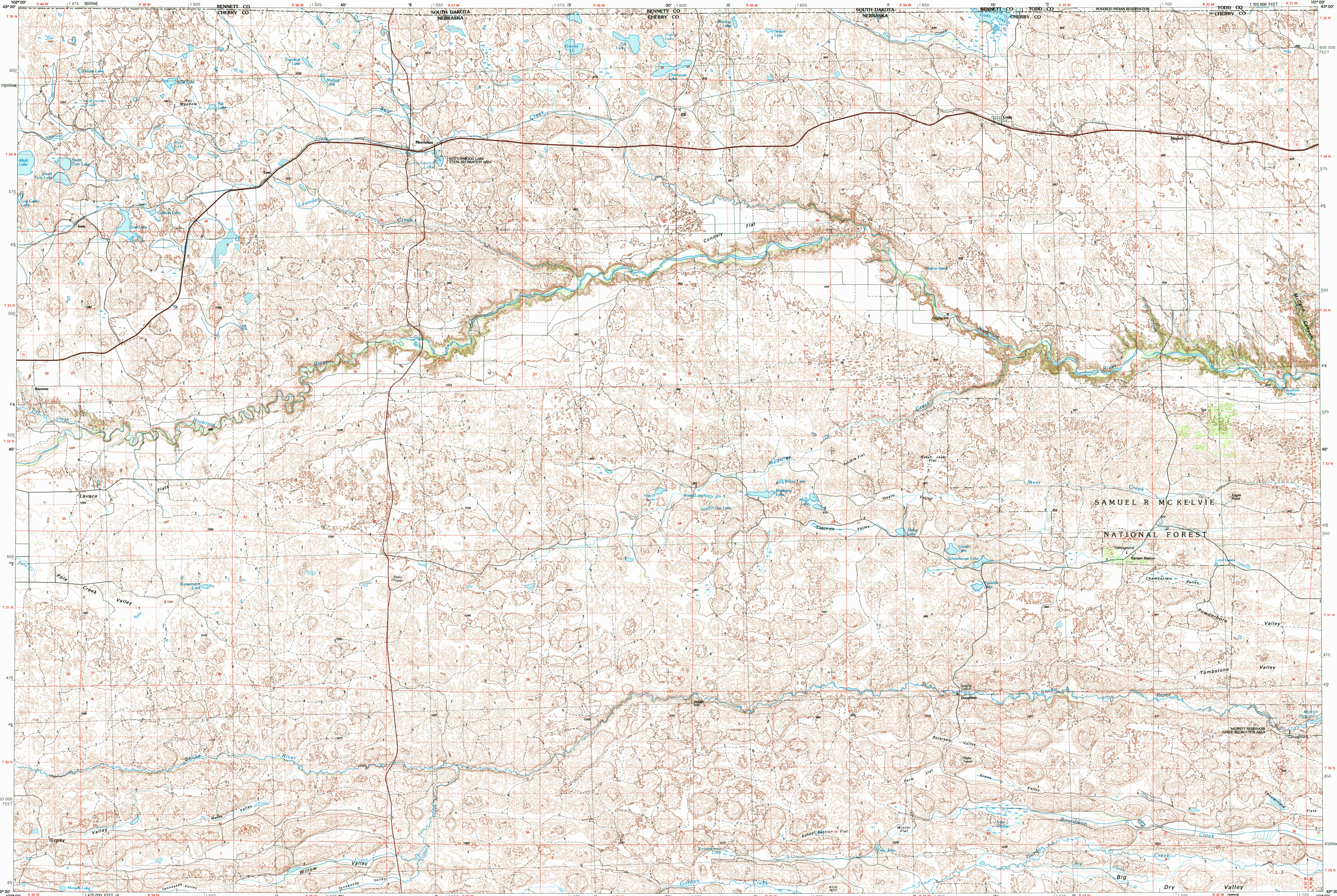


CODY, NEBRASKA-SOUTH DAKOTA

30 X 60 MINUTE SERIES (TOPOGRAPHIC)



Cody

NEBRASKA-SOUTH DAKOTA

1:100 000-scale metric topographic map

30 X 60 MINUTE QUADRANGLE SHOWING

- Contours and elevations in meters
- Highways, roads and other manmade structures
- Water features
- Woodland areas
- Geographic names

U. S. GEOLOGICAL SURVEY

1994

Produced by the United States Geological Survey
 Compiled from USGS 1:24 000 and 1:62 500-scale topographic maps dated 1950-1985. Planimetry revised from aerial photographs taken 1985-91 and other source data. Revised information not field checked. Map edited 1994
 1927 North American Datum (NAD 27). Projection and 10 000-meter grid: Universal Transverse Mercator, zone 14 25 000-foot ticks; Nebraska coordinate system, north zone
 The difference between NAD 27 and North American Datum of 1983 (NAD 83) is too small to show at this scale. The values of the shift between the datums for 7.5-minute intersections are given in USGS Bulletin 1875
 There may be private inholdings within the boundaries of the National or State reservations shown on this map

CONTOUR INTERVAL 10 METERS
 NATIONAL GEODETIC VERTICAL DATUM OF 1929
 ELEVATIONS SHOWN TO THE NEAREST METER

THIS MAP COMPLIES WITH NATIONAL MAP ACCURACY STANDARDS

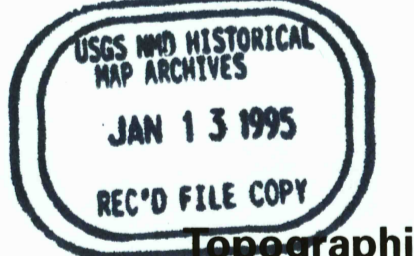
CONVERSION TABLE		DECLINATION DIAGRAM		ADJOINING MAPS		
Meters	Feet	GN	MN	1	2	3
1	3.2808			4	5	6
2	6.5617			1	2	3
3	9.8425			4	5	6
4	13.1234			7	8	9
5	16.4042			10	11	12
6	19.6850			13	14	15
7	22.9659			16	17	18
8	26.2467			19	20	21
9	29.5275			22	23	24
10	32.8084			25	26	27

To convert meters to feet multiply by 3.2808
 To convert feet to meters multiply by 0.3048

UTM grid convergence (GN) and 1983 magnetic declination (MN) at center of map. Diagram is approximate.

1 Pine Ridge
 2 Martin
 3 Mission
 4 Gordon
 5 Valentine
 6 Alliance
 7 Madras
 8 Goose Creek

FOR SALE BY U.S. GEOLOGICAL SURVEY
 DENVER, COLORADO 80225, OR RESTON, VIRGINIA 22092



Topographic Map Symbols

Primary highway, hard surface	
Secondary highway, hard surface	
Light duty road, principal street, hard or improved surface	
Other road or street; trail	
Route marker: Interstate, U.S. State	
Railroad: standard gage, narrow gage	
Bridge: overpass, underpass	
Tunnel: road, railroad	
Built-up area, locality, elevation	
Airport; landing field, landing strip	
National boundary	
State boundary	
County boundary	
City/township boundary	
National or State reservation boundary	
Land grant boundary	
U.S. public lands survey: range, township, section	
Range, township, section line: protected	
Power transmission line: pipeline	
Dam: dam with lock	
Cemetery: building	
Windmill, water well, spring	
Mine shaft; adit or cave; mine, quarry, gravel pit	
Campground, picnic area; U.S. location monument	
Ruins; cliff dwelling	
Distorted surface: strip mine, levee, sand	
Contours: index, intermediate, supplementary	
Bathymetric contours: index, intermediate	
Stream, lake: perennial, intermittent	
Rapids, large and small; falls, large and small	
Area to be submerged; marsh, swamp	
Land subject to controlled inundation, woodland	
Sand, mangrove	
Orchard; vineyard	