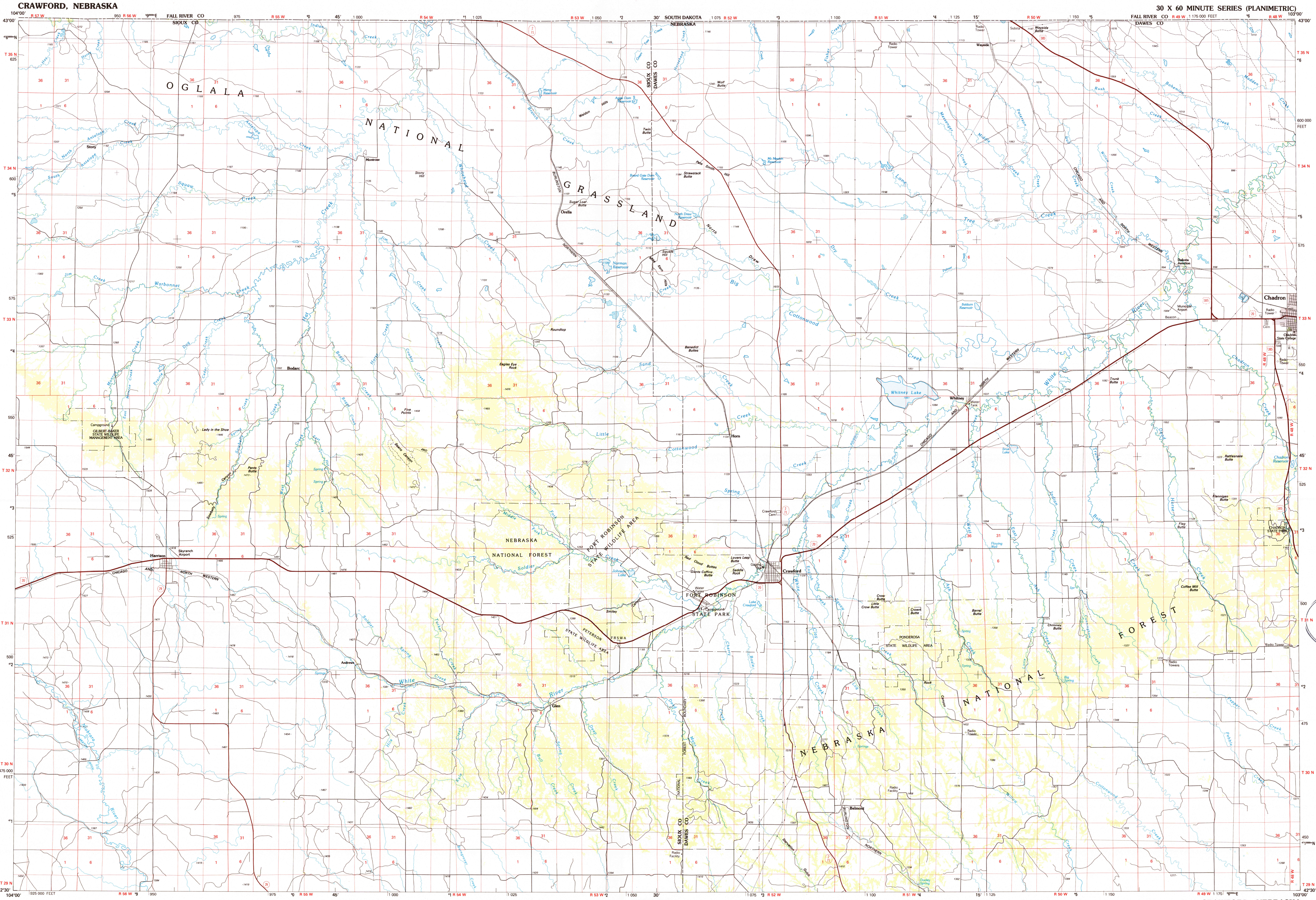
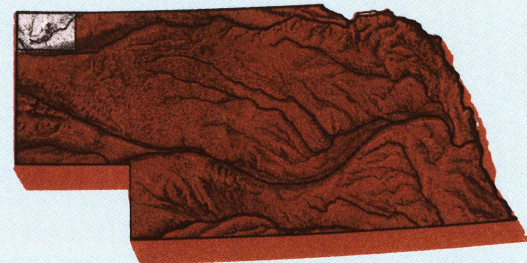


CRAWFORD, NEBRASKA



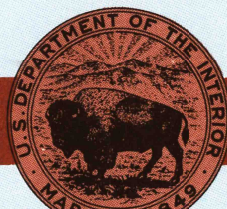
Crawford
NEBRASKA

1:100 000-scale
planimetric map



30 X 60 MINUTE QUADRANGLE
SHOWING

- Elevations in meters
- Highways, roads and other manmade structures
- Water features
- Woodland areas
- Geographic names



GEOLOGICAL SURVEY

1986


Produced by the United States Geological Survey

Compiled from USGS 1:24 000-scale topographic maps dated 1970-1980. Planimetry revised from aerial photographs taken 1984 and other source data. Revised information not field checked. Map edited 1986.

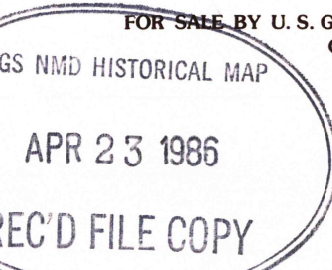
Projection and 10 000-meter grid, zone 13
Universal Transverse Mercator
25 000-foot grid ticks based on Nebraska coordinate system, north zone, 1927 North American Datum. To place on the predicted North American Datum 1983 move the projection lines 7 meters north and 43 meters east. There may be private inholdings within the boundaries of the National or State reservations shown on this map.

NATIONAL GEODETIC VERTICAL DATUM OF 1929
ELEVATIONS SHOWN TO THE NEAREST METER

THIS MAP COMPLIES WITH NATIONAL MAP ACCURACY STANDARDS

CONVERSION TABLE		DECLINATION DIAGRAM	ADJOINING MAPS		
Meters	Feet		1	2	3
1	3.2808		1	2	3
2	6.5617		4	5	
3	9.8425		6	7	8
4	13.1234				
5	16.4042				
6	19.6850				
7	22.9659				
8	26.2467				
9	29.5275				
10	32.8084				
To convert meters to feet multiply by 3.2808		UTM grid convergence (G) and 1983 magnetic declination (M) at center of map. Diagram is approximate.	1 Lance Creek		
To convert feet to meters multiply by 0.3048			2 Hot Springs		
			3 Pine Ridge		
			4 Lusk		
			5 Gordon		
			6 Fortington		
			7 Hemingford		
			8 Alliance		

FOR SALE BY U.S. GEOLOGICAL SURVEY, DENVER, COLORADO 80225
OR RESTON, VIRGINIA 22092



Topographic Map Symbols

- Primary highway, hard surface
- Secondary highway, hard surface
- Light duty road, principal street, hard or improved surface
- Other road or street, trail
- Route marker, interstate, U.S., State
- Railroad: standard gage; narrow gage
- Bridge; overpass; underpass
- Tunnel: road; railroad
- Built up area; locality; elevation
- Airport; landing field; landing strip
- National boundary
- State boundary
- County boundary
- National or State reservation boundary
- Land grant boundary
- U.S. public lands survey: range, township, section
- Range, township; section line, protected
- Power transmission line, pipeline
- Dam; dam with lock
- Cemetery; building
- Windmill; water well; spring
- Mine shaft; salt or cave; mine, quarry; gravel pit
- Campground; picnic area; U.S. location monument
- Ruin; cliff dwelling
- Distorted surface: strip mine, leys, sand
- Contours: index; intermediate; supplementary
- Bathymetric contours: index; intermediate
- Stream, lake; perennial; intermittent
- Rapids, large and small; falls, large and small
- Area to be submerged; marsh, swamp
- Land subject to controlled inundation; woodland
- Scrub; mangrove
- Orchard; vineyard

A pamphlet describing topographic maps is available on request

CRAWFORD, NEBRASKA

42103-E1-PL-100

1986