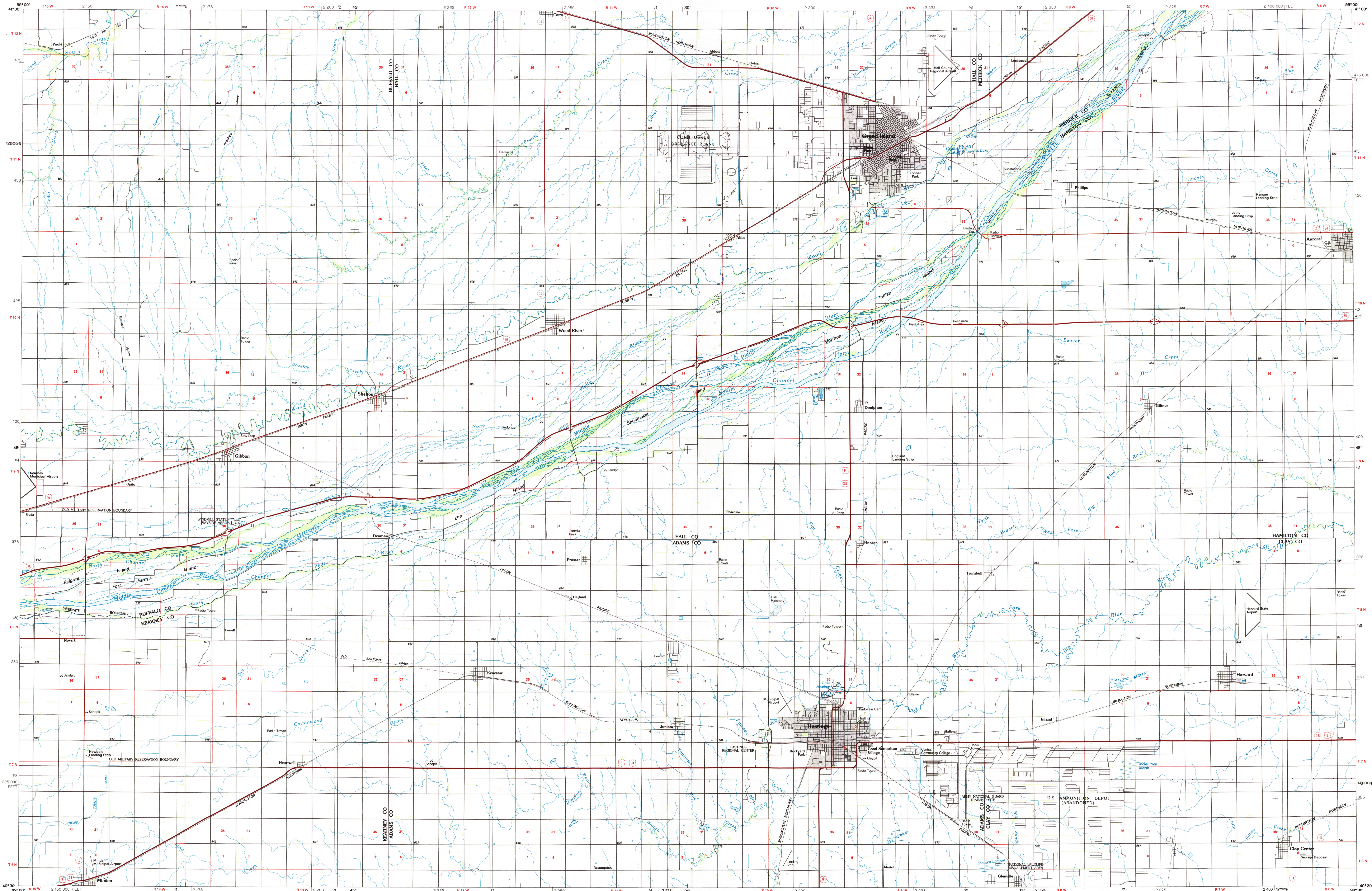
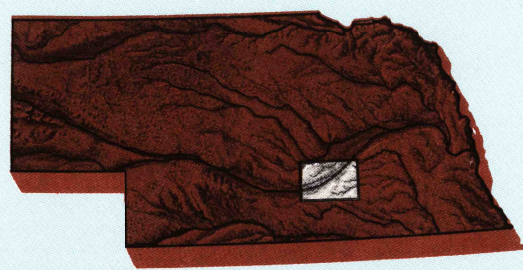
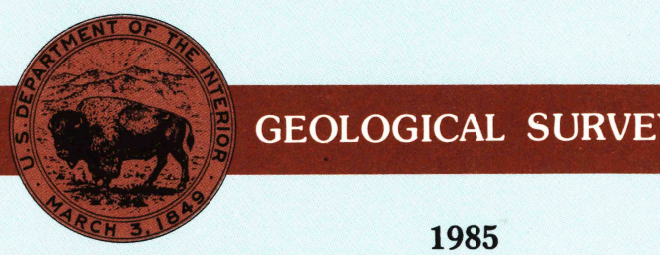


GRAND ISLAND, NEBRASKA

30 X 60 MINUTE SERIES (PLANIMETRIC)

Grand Island
NEBRASKA1:100 000-scale
planimetric map30 X 60 MINUTE QUADRANGLE
SHOWING

- Elevations in meters
- Highways, roads and other manmade structures
- Water features
- Woodland areas
- Geographic names



Produced by the United States Geological Survey

Compiled from USGS 1:24 000-scale topographic maps dated 1962-1983. Planimetry revised from aerial photographs taken 1981 and other source data. Revised information not field checked. Map edited 1985.

Projection and 10 000-meter grid, zone 14, Universal Transverse Mercator
25 000-foot grid ticks based on Nebraska coordinate system, south zone
1927 North American Datum
To place on the predicted North American Datum 1983, move the projection lines 4 meters north and 30 meters east.

There may be private inholdings within the boundaries of the National or State reservations shown on this map.

NATIONAL GEODETIC VERTICAL DATUM OF 1929

ELEVATIONS SHOWN TO THE NEAREST METER

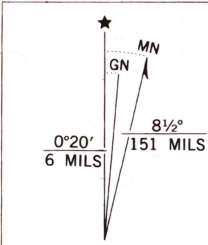
THIS MAP COMPLIES WITH NATIONAL MAP ACCURACY STANDARDS

CONVERSION TABLE

Meters	Feet
1	3.2808
2	6.5617
3	9.8425
4	13.1234
5	16.4042
6	19.6850
7	22.9659
8	26.2467
9	29.5275
10	32.8084

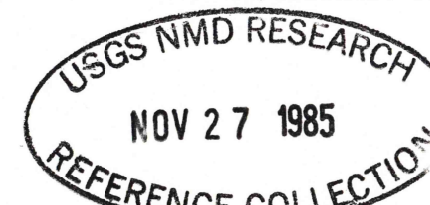
To convert meters to feet
multiply by 3.2808
To convert feet to meters
multiply by 0.3048

DECLINATION DIAGRAM

UTM grid convergence
(000' and 180' magnetic
declination (MM)
at center of map
Diagram is approximate

ADJOINING MAPS

1	2	3
1	2	3
4	5	6
7	8	9

1 Broken Bow
2 Saxe Paul
3 David City
4 Kearney
5 York
6 Holdrege
7 Red Cloud
8 FairburyFOR SALE BY U. S. GEOLOGICAL SURVEY
DENVER, COLORADO 80225, OR RESTON, VIRGINIA 22092

Topographic Map Symbols

Primary highway, hard surface	Secondary highway, hard surface	Light duty road, principal street, hard or improved surface	Other road or street, trail	Route marker: Interstate, U.S., State	Railroad: standard gauge, narrow gauge	Bridge: overpass, underpass	Tunnel: road, railroad	Built up area, locality, elevation	Airport, landing field, landing strip	National boundary	State boundary	County boundary	National or State reservation boundary	Land grant boundary	U.S. public lands survey: range, township, section	Range, township, section line, projected	Power transmission line, pipeline	Dam, dam with lock	Cemetery, building	Windmill, water well, spring	Mine shaft, adit or cave, mine, quarry, gravel pit	Campground, picnic area, U.S. location monument	Ruin, cliff dwelling	Distorted surface: strip mine, lava, sand	Contours: index, intermediate, supplementary	Bathymetric contours: index, intermediate	Stream, lake, perennial, intermittent	Plaque, large and small; tide, large and small	Area to be submerged, marsh, swamp	Land subject to controlled inundation, woodland	Scrub, mangrove	Orchard, vineyard
-------------------------------	---------------------------------	---	-----------------------------	---------------------------------------	--	-----------------------------	------------------------	------------------------------------	---------------------------------------	-------------------	----------------	-----------------	--	---------------------	--	--	-----------------------------------	--------------------	--------------------	------------------------------	--	---	----------------------	---	--	---	---------------------------------------	--	------------------------------------	---	-----------------	-------------------

A pamphlet describing topographic maps is available on request

GRAND ISLAND, NEBRASKA
40098-E1-PL-100

1985