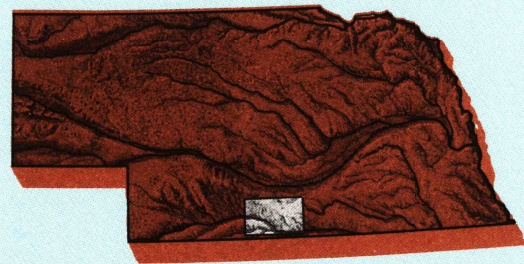


Holdrege

NEBRASKA-KANSAS

1:100 000-scale metric
topographic map



30 X 60 MINUTE QUADRANGLE
SHOWING

- Contours and elevations in meters
- Highways, roads and other manmade structures
- Water features
- Woodland areas
- Geographic names



Produced by the United States Geological Survey

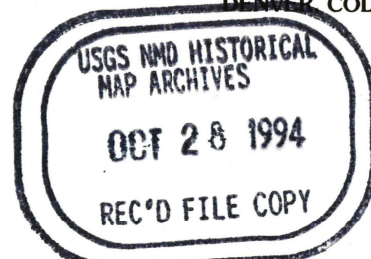
Compiled from USGS 1:24 000-scale topographic maps dated 1957-1974. Planimetry revised from aerial photographs taken 1981 and other source data. Revised information not field checked. Map edited 1986 1927 North American Datum (NAD 27). Projection and 10 000-meter grid: Universal Transverse Mercator, zone 14 25 000-foot ticks: Nebraska coordinate system, south zone The difference between NAD 27 and North American Datum of 1983 (NAD 83) is too small to show at this scale. The values of the shift between the datums for 7.5-minute intersections are given in USGS Bulletin 1875. There may be private inholdings within the boundaries of the National or State reservations shown on this map Map photoinspected using 1988-90 photographs No major culture or drainage changes found

CONTOUR INTERVAL 10 METERS
NATIONAL GEODETIC VERTICAL DATUM OF 1929
ELEVATIONS SHOWN TO THE NEAREST METER

THIS MAP COMPLIES WITH NATIONAL MAP ACCURACY STANDARDS

CONVERSION TABLE		DECLINATION DIAGRAM	ADJOINING MAPS			
Meters	Feet		1	2	3	
1	3.2808		4	5		
2	6.5617					
3	9.8425					
4	13.1234					
5	16.4042					
6	19.6850					
7	22.9659					
8	26.2467					
9	29.5276					
10	32.8084					
To convert meters to feet multiply by 3.2808		UTM grid convergence (GN) and 1986 magnetic declination (M) at center of map Diagram is approximate	1 Gothenburg			
To convert feet to meters multiply by 0.3048			2 Kearney			
		3 Grand Island				
		4 McCook				
		5 Red Cloud				
		6 Overlin				
		7 Norton				
		8 Smith Center				

FOR SALE BY U.S. GEOLOGICAL SURVEY
DENVER, COLORADO 80225, OR RESTON, VIRGINIA 22092

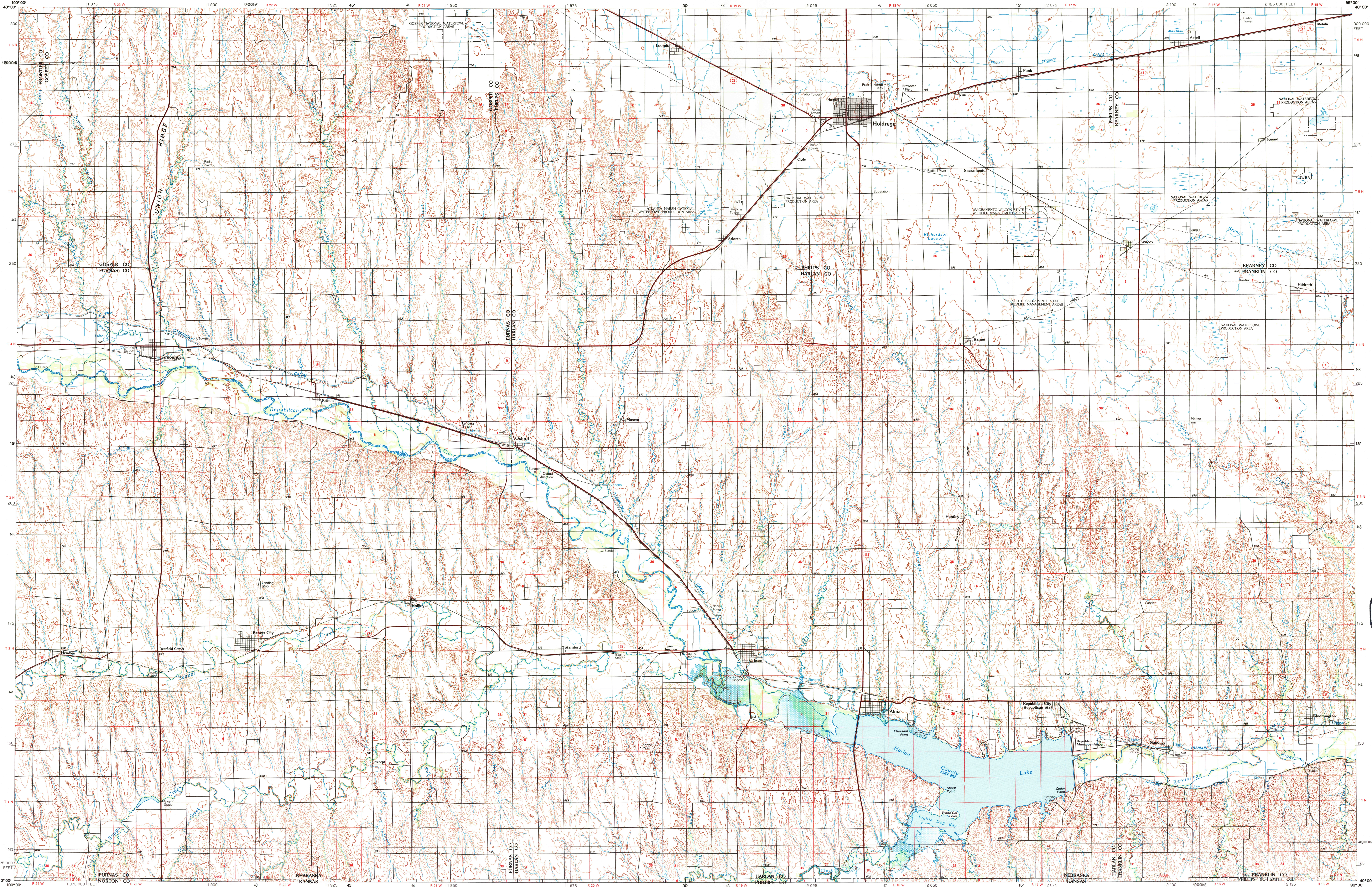


Topographic Map Symbols

Primary highway, hard surface	
Secondary highway, hard surface	
Light duty road, principal street, hard or improved surface	
Other road or street; trail	
Route marker: Interstate; U.S. State	
Railroad: standard gage; narrow gage	
Bridge: overpass; underpass	
Tunnel: road; railroad	
Built-up area; locality; elevation	
Airport; landing field; landing strip	
National boundary	
State boundary	
County boundary	
Outstanding boundary	
National or State reservation boundary	
Land grant boundary	
U.S. public lands survey: range, township, section	
Range, township; section line: protracted	
Power transmission line: pipeline	
Dam: dam with lock	
Cemetery: building	
Windmill; water well; spring	
Mine shaft; adit or cave; mine, quarry; gravel pit	
Campground; picnic area; U.S. location monument	
Ruins; cliff dwelling	
Disturbed surface: strip mine, lava, sand	
Contours: index; intermediate; supplementary	
Bathymetric contours: index; intermediate	
Stream, lake; perennial; intermittent	
Rapids, large and small; falls, large and small	
Area to be submerged; marsh, swamp	
Land subject to controlled inundation; woodland	
Scrub; mangrove	
Orchard; vineyard	

A pamphlet describing topographic maps is available on request

HOLDREGE, NEBRASKA-KANSAS



• INTERIOR-GEOLOGICAL SURVEY RESTON, VIRGINIA-1984

KILOMETERS 1 0 1 2 3 4 5 6 7 8 9 10 11 12 13 14 15 16 17 18 19 20

MILES 1 0 1 2 3 4 5 6 7 8 9 10 11 12 13

SCALE 1:100 000

1 CENTIMETER ON THE MAP REPRESENTS 1 KILOMETER ON THE GROUND

CONTOUR INTERVAL 10 METERS

1000 0 5000 10 000 15 000 20 000 METERS

5000 0 10 000 20 000 30 000 40 000 50 000 60 000 70 000 FEET

HOLDREGE, NEBRASKA-KANSAS
40099-A1-TM-100

1986
PHOTOINSPECTED 1990