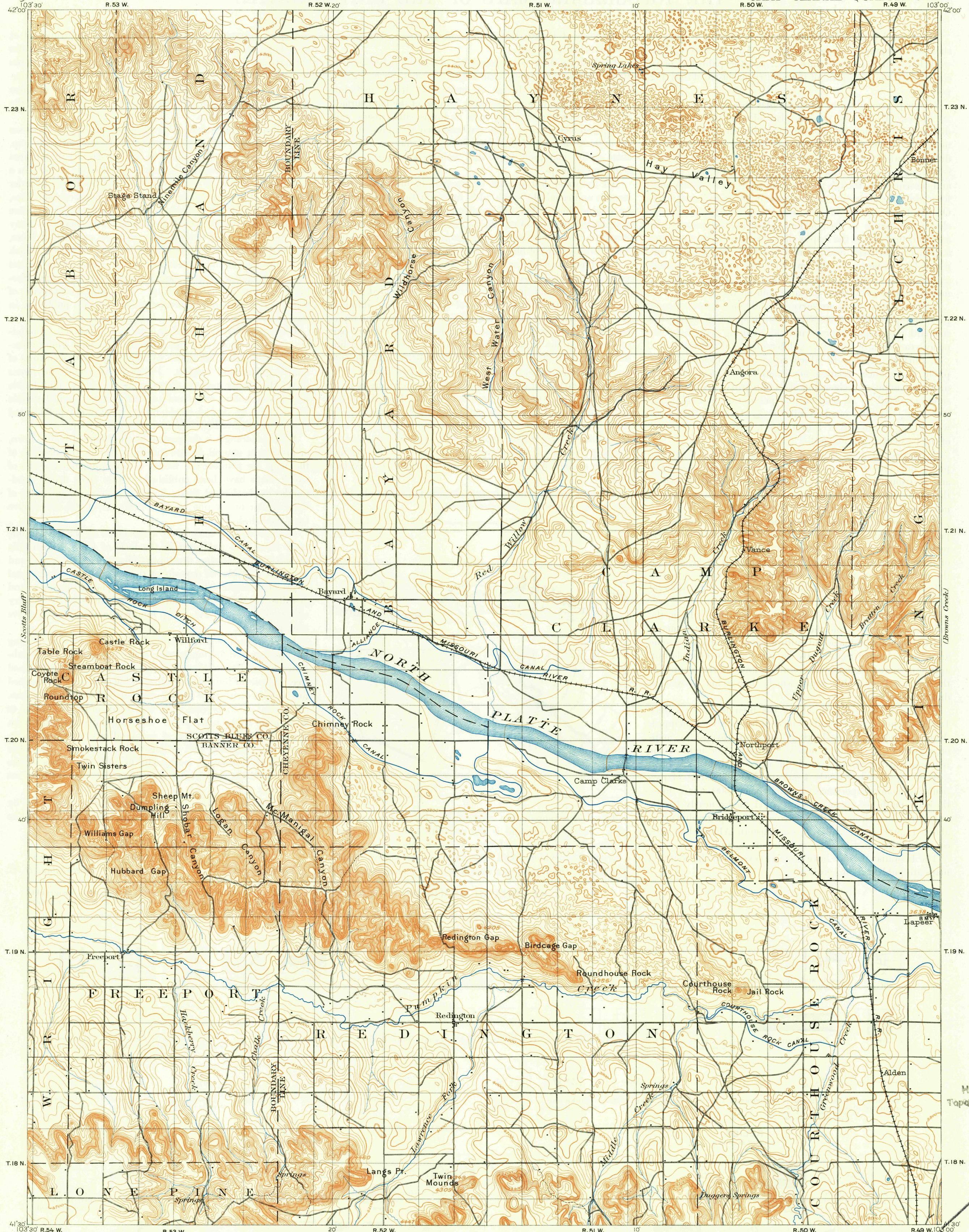


U.S.G.S.
FILE COPY
Inspection and Editing.

UNITED STATES
DEPARTMENT OF THE INTERIOR
GEOLOGICAL SURVEY

NEBRASKA
CAMP CLARKE QUADRANGLE



Henry Gannett, Chief Topographer.
Jno. H. Renshaw, Topographer in charge.
Control by E. M. Douglas, U.S. Engineer Corps,
and General Land Office.
Topography by H. B. Blair.
Surveyed in 1895.

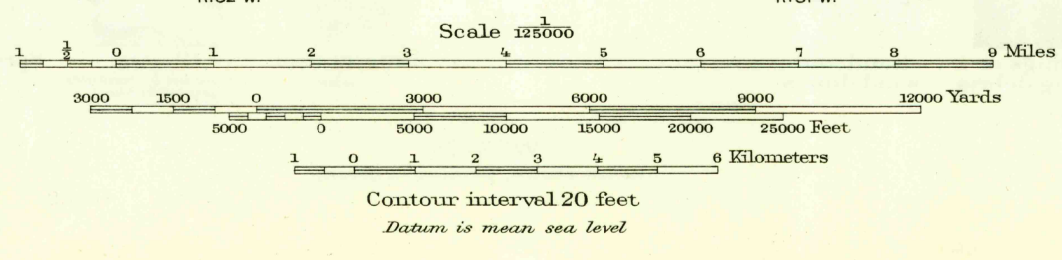


DIAGRAM OF TOWNSHIP

6	5	4	3	2	1
7	8	9	10	11	12
18	17	16	15	14	13
19	20	21	22	23	24
30	29	28	27	26	25
31	32	33	34	35	36

Edition of 1898, reprinted 1949
Polyconic projection.
This map made from surveys
without spirit level control

NEBR.
CAMP CLARKE
N 4130 - W 10300/30

USGS
Historical File
Topographic Division

U.S.G.S.
FILE COPY
Inspection and Editing.