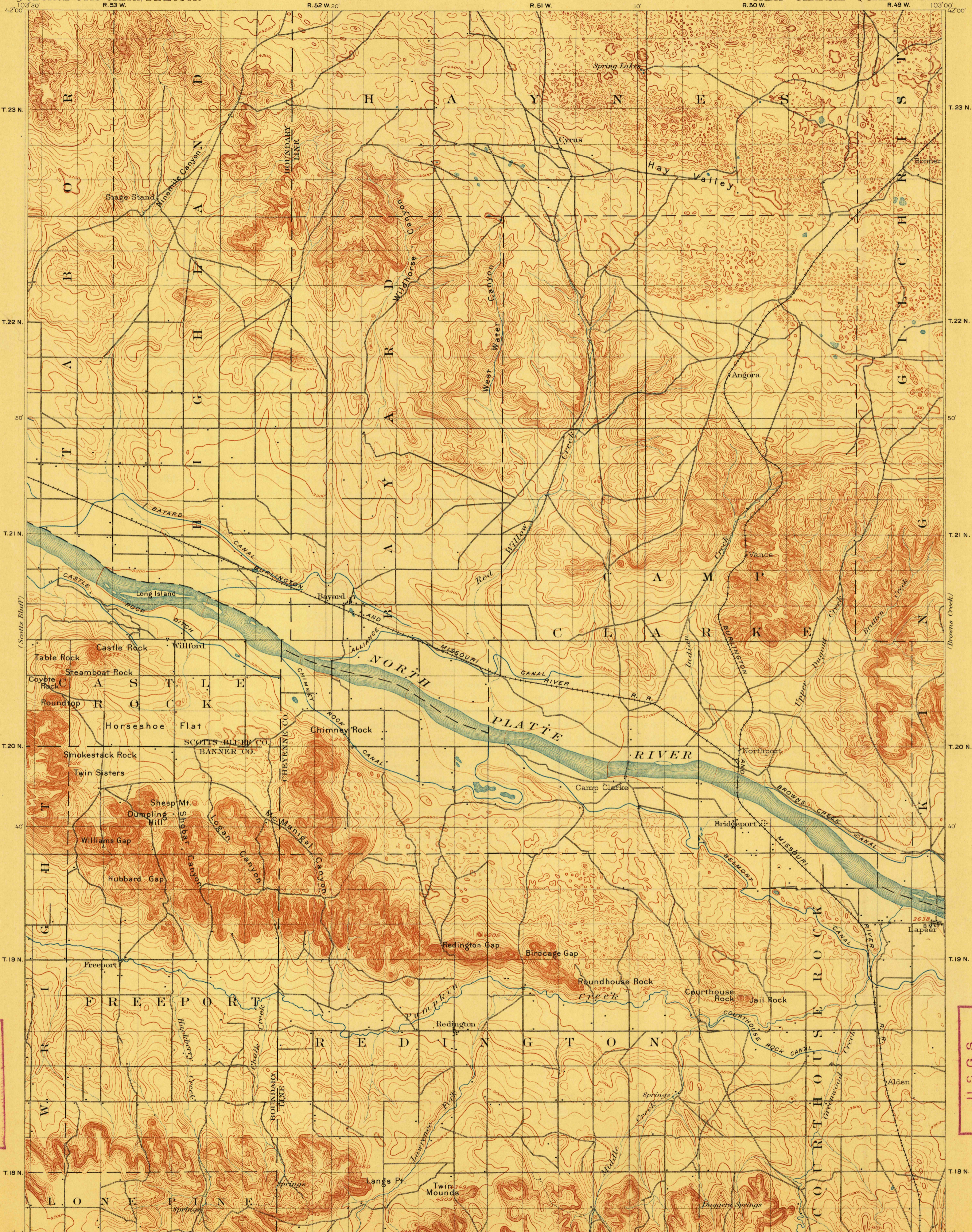


TOPOGRAPHY

NEBRASKA
CAMP CLARKE QUADRANGLE

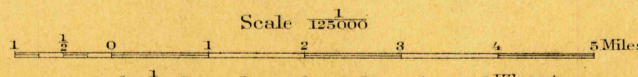
U.S. GEOLOGICAL SURVEY
GEORGE OTIS SMITH, DIRECTOR



FILE COPY
Ed. Div. Topographic Maps.

U. S. G. S.
FILE COPY
Ed. Div. Topographic Maps.

ENGRAVED DEC. 1897 BY U.S.G.S.
Henry Gannett, Chief Topographer.
Jno. H. Renshaw, Topographer in charge.
Control by E.M. Douglas, U.S. Engineer Corps,
and General Land Office.
Topography by H.B. Blair.
Surveyed in 1895.



Scale 125000
Contour interval 20 feet.
Datum is mean sea level.

USGS
Historical File
Topographic Division

Edition of Map 1898, reprinted May 1911.

MAY 31 1911 2568

CAMP CLARKE, Neb.

NOTE: Geologic Folio No. 87, price 25 cents, treats of the geology and of the volcanic ash resources of this area. Adjoining folio—Scotts Bluff—is also available at same price.