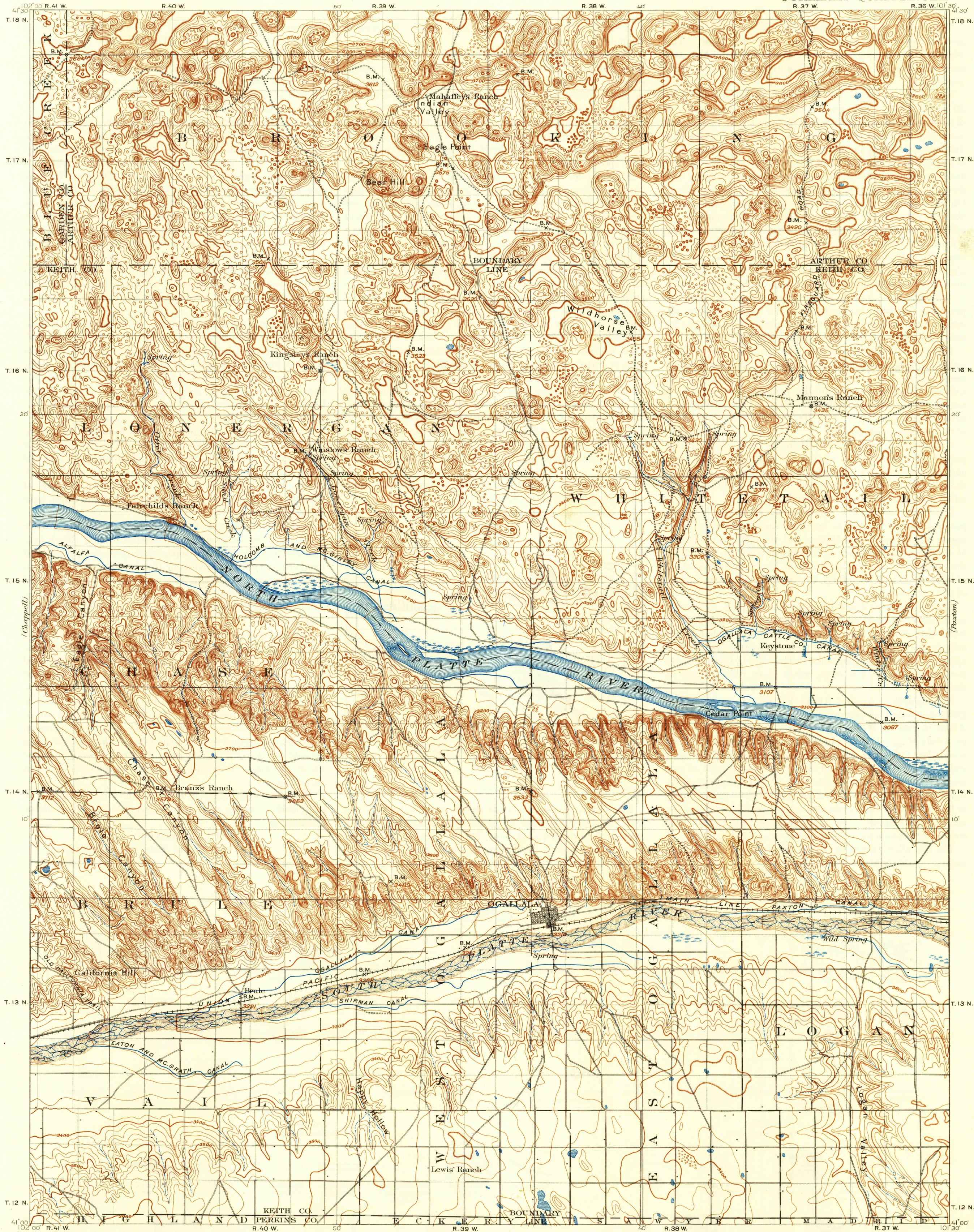


U. S. G. S.  
FILE COPY  
Inspection and Editing.

UNITED STATES  
DEPARTMENT OF THE INTERIOR  
GEOLOGICAL SURVEY

NEBRASKA  
OGALLALA QUADRANGLE



Jno. H. Renshaw, Geographer in charge.  
Control by Geo. T. Hawkins.  
Topography by H. B. Blair.  
Surveyed in 1897.

Scale 1:25,000  
0 1 2 3 4 5 6 7 8 9 Miles  
0 5000 10000 15000 20000 25000 Feet  
0 1 2 3 4 5 6 Kilometers  
Contour interval 20 feet.  
Datum is mean sea level.

Edition of 1900, reprinted 1946  
Polyconic projection

NEBR.  
OGALLALA  
N4100-W10130/30

USGS  
Historical File  
Topographic Division

U. S. G. S.  
FILE COPY  
Inspection and Editing.

APR 19 1946

5335