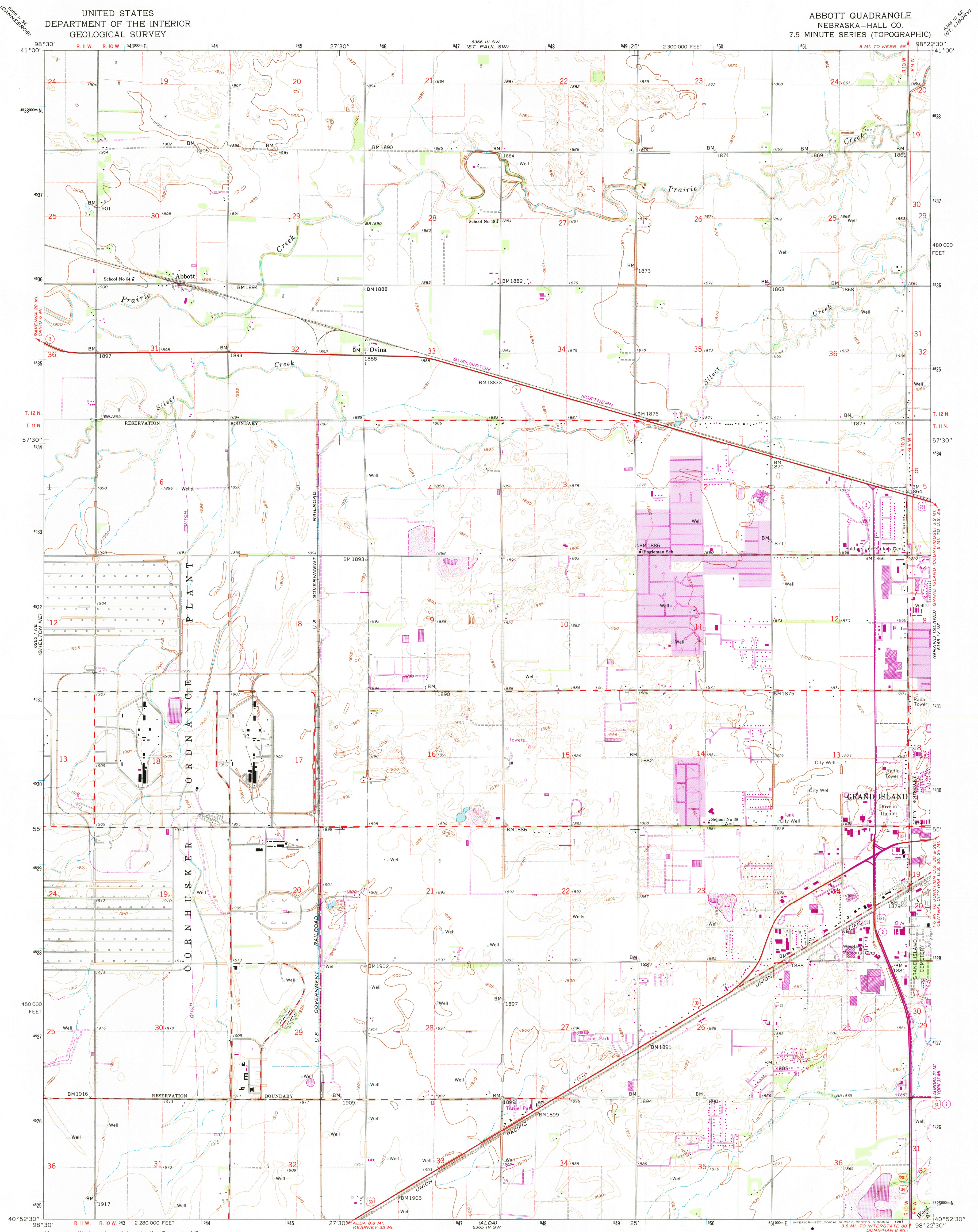
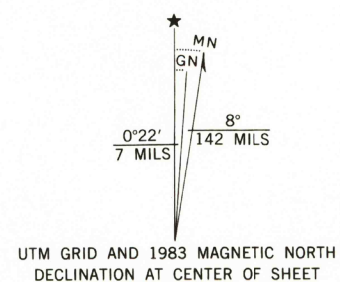


UNITED STATES  
DEPARTMENT OF THE INTERIOR  
GEOLOGICAL SURVEY

ABBOTT QUADRANGLE  
NEBRASKA—HALL CO.  
7.5 MINUTE SERIES (TOPOGRAPHIC)



Mapped, edited, and published by the Geological Survey as part of the Department of the Interior program for the development of the Missouri River Basin Control by USGS, USC&GS, and U.S. Bureau of Reclamation. Planimetry by photogrammetric methods from aerial photographs taken 1951. Topography by planimetric survey 1962. Polyconic projection. 1927 North American datum 10,000-foot grid based on Nebraska coordinate system, south zone 1000-meter Universal Transverse Mercator grid ticks, zone 14, shown in blue. To place on the predicted North American Datum 1983, move the projection lines 4 meters north and 30 meters east as shown by dashed corner ticks.



SCALE 1:24,000  
1 000 0 1000 2000 3000 4000 5000 6000 7000 FEET  
1 KILOMETER  
CONTOUR INTERVAL 5 FEET  
NATIONAL GEODETIC VERTICAL DATUM OF 1929



ROAD CLASSIFICATION  
Heavy-duty ——— Light-duty ———  
Medium-duty ——— Unimproved dirt ———  
U.S. Route —○— State Route —○—

THIS MAP COMPLIES WITH NATIONAL MAP ACCURACY STANDARDS  
FOR SALE BY U.S. GEOLOGICAL SURVEY, DENVER, COLORADO 80225, OR RESTON, VIRGINIA 22092  
A FOLDER DESCRIBING TOPOGRAPHIC MAPS AND SYMBOLS IS AVAILABLE ON REQUEST

Revisions shown in purple compiled from aerial photographs taken 1981 and other sources. This information not field checked. Map edited 1983. Purple tint indicates extension of urban area.

ABBOTT, NEBR.  
N4052.5—W9822.5/7.5  
1962  
PHOTOREVISED 1983  
DMA 6365 IV NW-SERIES 7875

U.S. GEOLOGICAL SURVEY  
NATIONAL MAP ARCHIVES