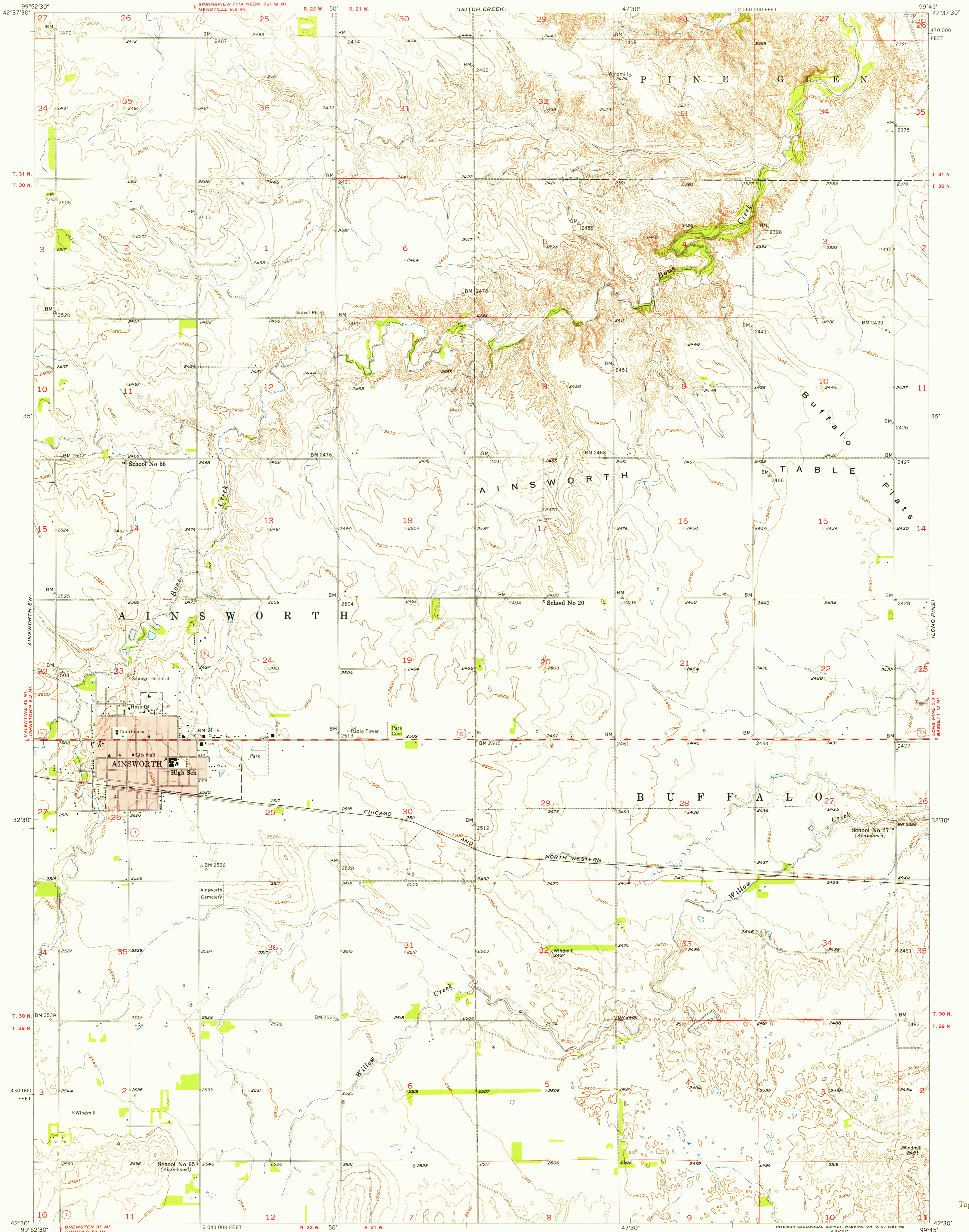
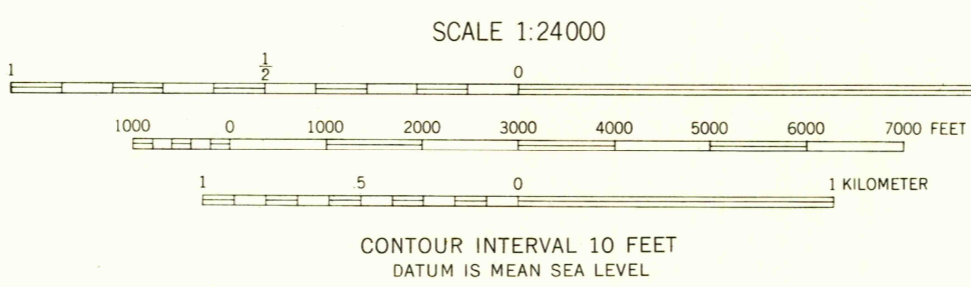
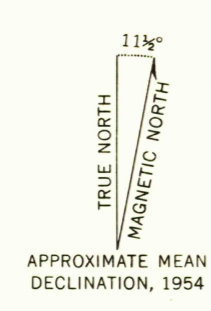


U.S.G.S.  
FILE COPY  
TOPOGRAPHIC DIVISION



Mapped, edited, and published by the Geological Survey as part of the Department of the Interior program for the development of the Missouri River Basin Control by USGS, USC&GS, and U.S. Bureau of Reclamation  
Topography by photogrammetric methods from aerial photographs taken 1951, by plane-table surveys 1954, and in part by U.S. Bureau of Reclamation  
Polyconic projection. 1927 North American datum 10,000-foot grid based on Nebraska coordinate system, north zone  
Red tint indicates area in which only landmark buildings are shown



CONTOUR INTERVAL 10 FEET  
DATUM IS MEAN SEA LEVEL



ROAD CLASSIFICATION

Heavy-duty	Light-duty
Medium-duty	Unimproved dirt
U.S. Route	State Route

AINSWORTH, NEBR.  
N4230-W9945/7.5

U.S.G.S.  
Historical File  
Topographic Division

U.S.G.S.  
FILE COPY  
TOPOGRAPHIC DIVISION