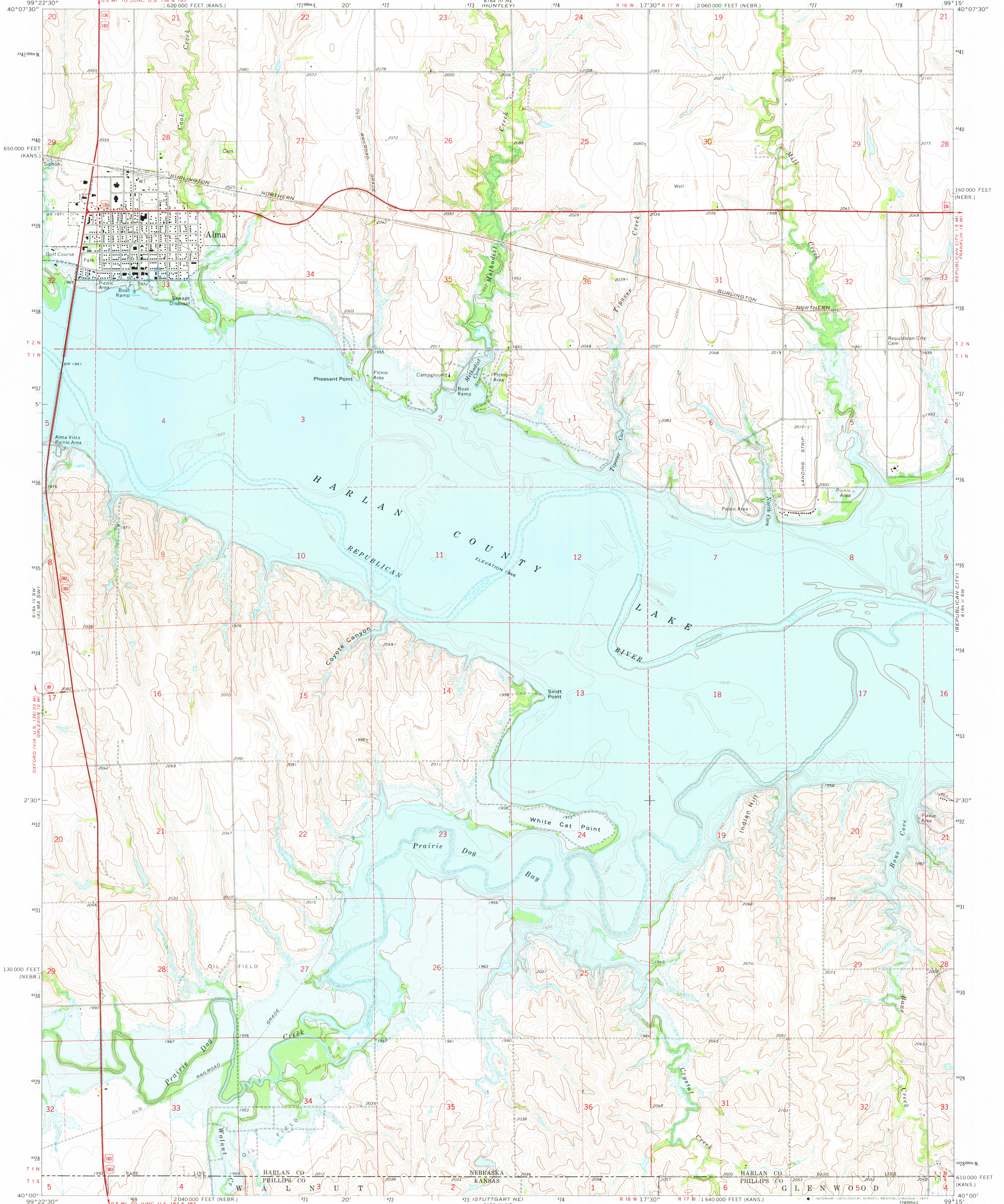


UNITED STATES
DEPARTMENT OF THE INTERIOR
GEOLOGICAL SURVEY

ALMA QUADRANGLE
NEBRASKA-KANSAS
7.5 MINUTE SERIES (TOPOGRAPHIC)



Mapped, edited, and published by the Geological Survey

Control by USGS and NOS/NOAA

Topography by photogrammetric methods from aerial photographs taken 1973. Field checked 1974

Underwater contours in Harlan County Lake from USCE maps dated 1943

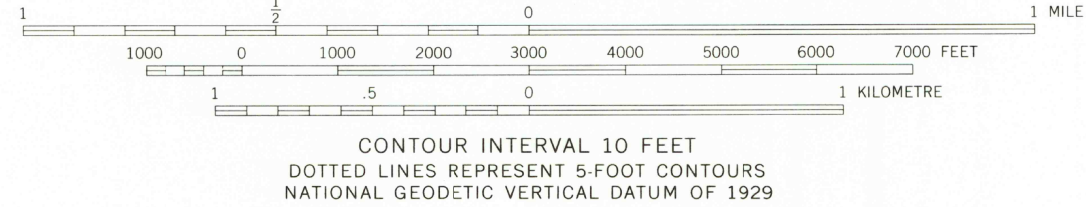
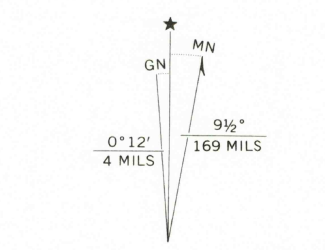
Projection: Nebraska coordinate system, south zone (Lambert conformal conic)

10,000-foot grid ticks based on Nebraska coordinate system, south zone, and Kansas coordinate system, north zone

1000-metre Universal Transverse Mercator grid ticks, zone 14, shown in blue. 1927 North American datum

Areas covered by dashed light-blue pattern are subject to controlled inundation

Fine red dashed lines indicate selected fence and field lines where generally visible on aerial photographs. This information is unchecked



THIS MAP COMPLIES WITH NATIONAL MAP ACCURACY STANDARDS FOR SALE BY U.S. GEOLOGICAL SURVEY, DENVER, COLORADO 80225, OR RESTON, VIRGINIA 22092 AND STATE GEOLOGICAL SURVEY, LAWRENCE, KANSAS 66044 A FOLDER DESCRIBING TOPOGRAPHIC MAPS AND SYMBOLS IS AVAILABLE ON REQUEST

ROAD CLASSIFICATION

Primary highway, hard surface	Light-duty road, hard or improved surface
Secondary highway, hard surface	Unimproved road
Interstate Route	U.S. Route
	State Route



ALMA, NEBR.-KANS. N4000-W9915/7.5 1974

3800
FEB 08 1978