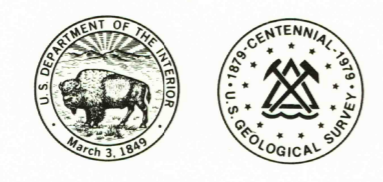


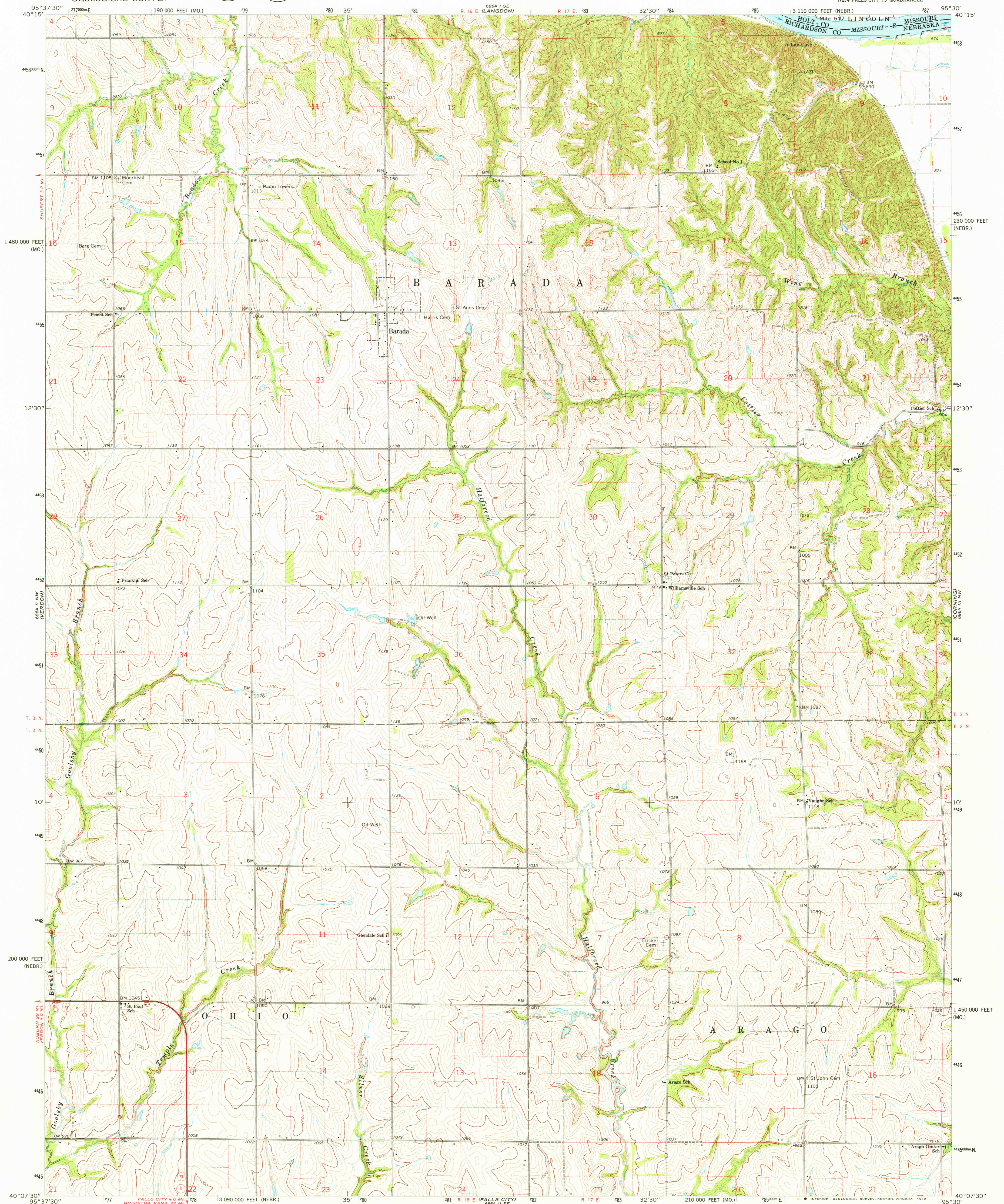
6864 II SE (NEBRASKA)

UNITED STATES DEPARTMENT OF THE INTERIOR GEOLOGICAL SURVEY

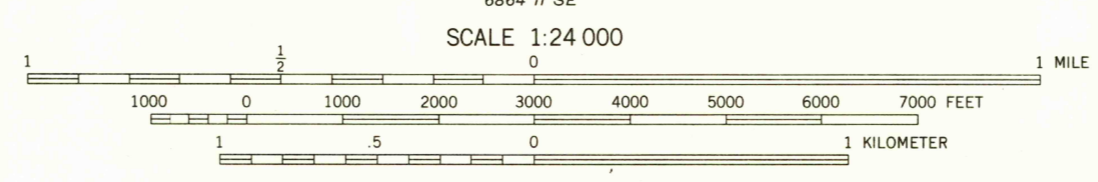
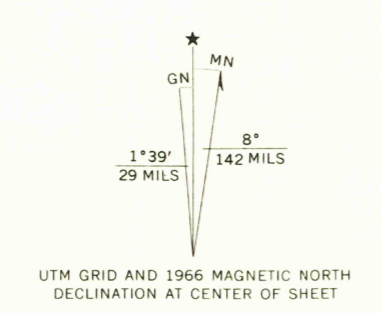


BARADA QUADRANGLE NEBRASKA-MISSOURI 7.5 MINUTE SERIES (TOPOGRAPHIC)

6864 II SE (MISSOURI) (FALLS CITY 15' QUADRANGLE)



Mapped, edited, and published by the Geological Survey as part of the Department of the Interior program for the development of the Missouri River Basin... Control by USGS and USC&GS... Topography by photogrammetric methods from aerial photographs taken 1965. Field checked 1966... Polyconic projection. 1927 North American datum 10,000-foot grid based on Nebraska coordinate system, south zone and Missouri coordinate system, west zone 1000-meter Universal Transverse Mercator grid ticks, zone 15, shown in blue... Fine red dashed lines indicate selected fence and field lines where generally visible on aerial photographs. This information is unchecked



SCALE 1:24 000... CONTOUR INTERVAL 10 FEET... DOTTED LINES REPRESENT 5-FOOT CONTOURS NATIONAL GEODETIC DATUM OF 1929... THIS MAP COMPLIES WITH NATIONAL MAP ACCURACY STANDARDS FOR SALE BY U. S. GEOLOGICAL SURVEY, DENVER, COLORADO 80225, OR RESTON, VIRGINIA 22092, AND THE DIVISION OF RESEARCH AND TECHNICAL INFORMATION MISSOURI DEPARTMENT OF NATURAL RESOURCES, ROLLA, MISSOURI 65401 A FOLDER DESCRIBING TOPOGRAPHIC MAPS AND SYMBOLS IS AVAILABLE ON REQUEST



ROAD CLASSIFICATION: Heavy-duty, Light-duty, Unimproved dirt, U.S. Route, State Route. USGS Historical File Topographic Division. BARADA, NEBR.-MO. N4007.5-W9530/7.5 1966. AMS 6864 II NE-SERIES V875

APR 14 1978

Handwritten number 2800