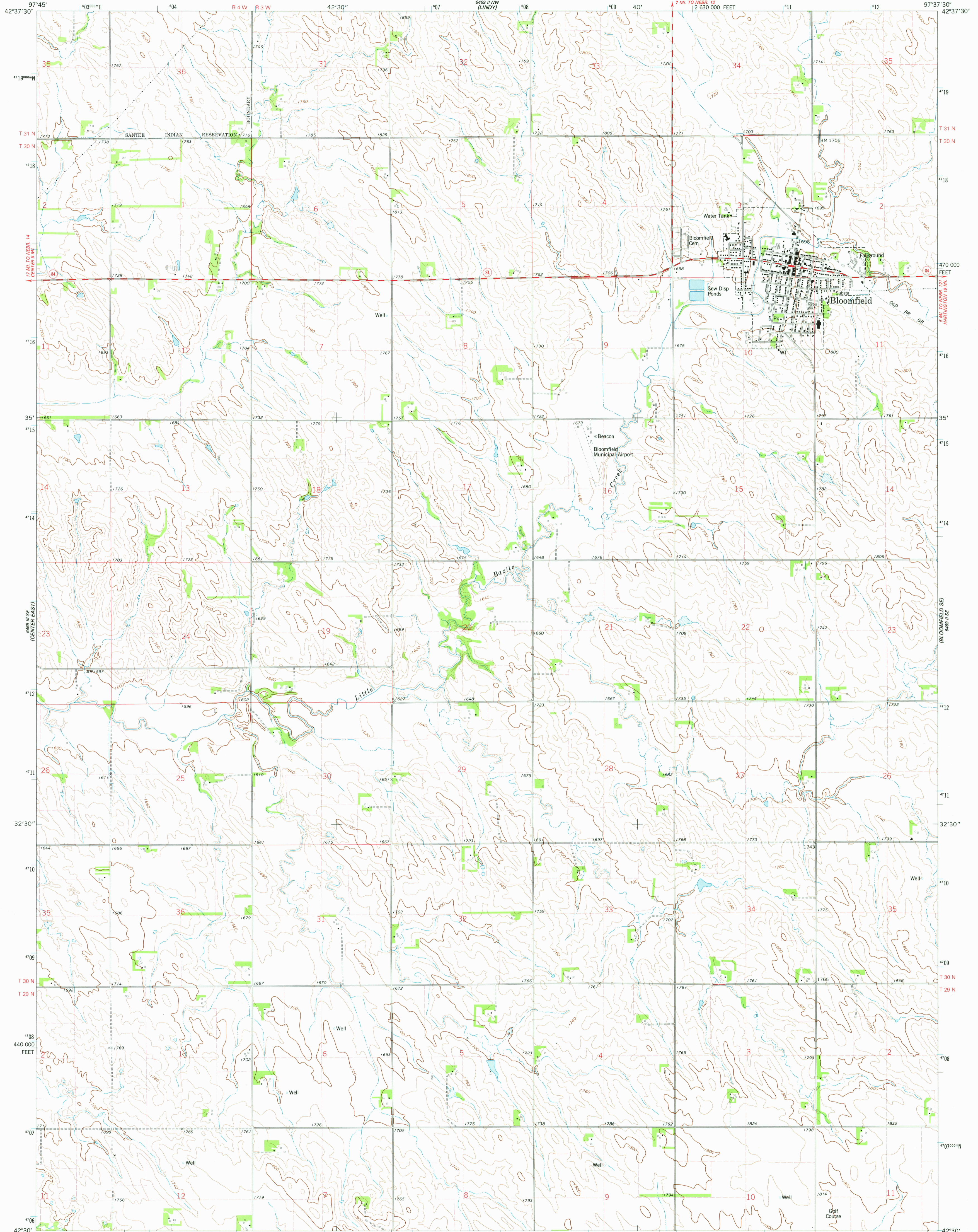


97°45' 42°37'30"

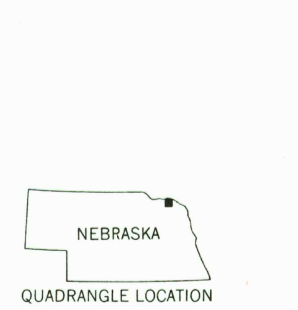
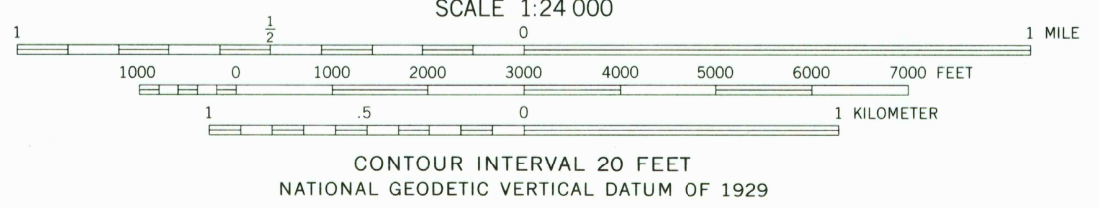
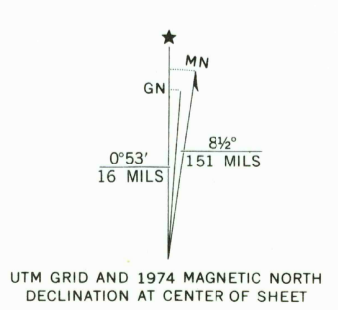
UNITED STATES DEPARTMENT OF THE INTERIOR GEOLOGICAL SURVEY

BLOOMFIELD QUADRANGLE NEBRASKA-KNOX CO. 7.5 MINUTE SERIES (TOPOGRAPHIC)

97°37'30" 42°37'30"



Mapped, edited, and published by the Geological Survey Control by USGS and NOS/NOAA Topography by photogrammetric methods from aerial photographs taken 1973. Field checked 1974 Projection and 10,000-foot grid ticks: Nebraska coordinate system, north zone (Lambert conformal conic) 1000-meter Universal Transverse Mercator grid ticks, zone 14, shown in blue. 1927 North American datum Fine red dashed lines indicate selected fence and field lines where generally visible on aerial photographs. This information is unchecked



ROAD CLASSIFICATION Primary highway, hard surface Secondary highway, hard surface Interstate Route U.S. Route State Route Light duty road, hard or improved surface Unimproved road

THIS MAP COMPLIES WITH NATIONAL MAP ACCURACY STANDARDS FOR SALE BY U. S. GEOLOGICAL SURVEY, DENVER, COLORADO 80225, OR RESTON, VIRGINIA 22092 A FOLDER DESCRIBING TOPOGRAPHIC MAPS AND SYMBOLS IS AVAILABLE ON REQUEST

USGS Historical File Topographic Division BLOOMFIELD, NEBR. N4230 - W9737.5/7.5 1974

JAN 12 1979

2800

AMS 6469 II SW—SERIES V875