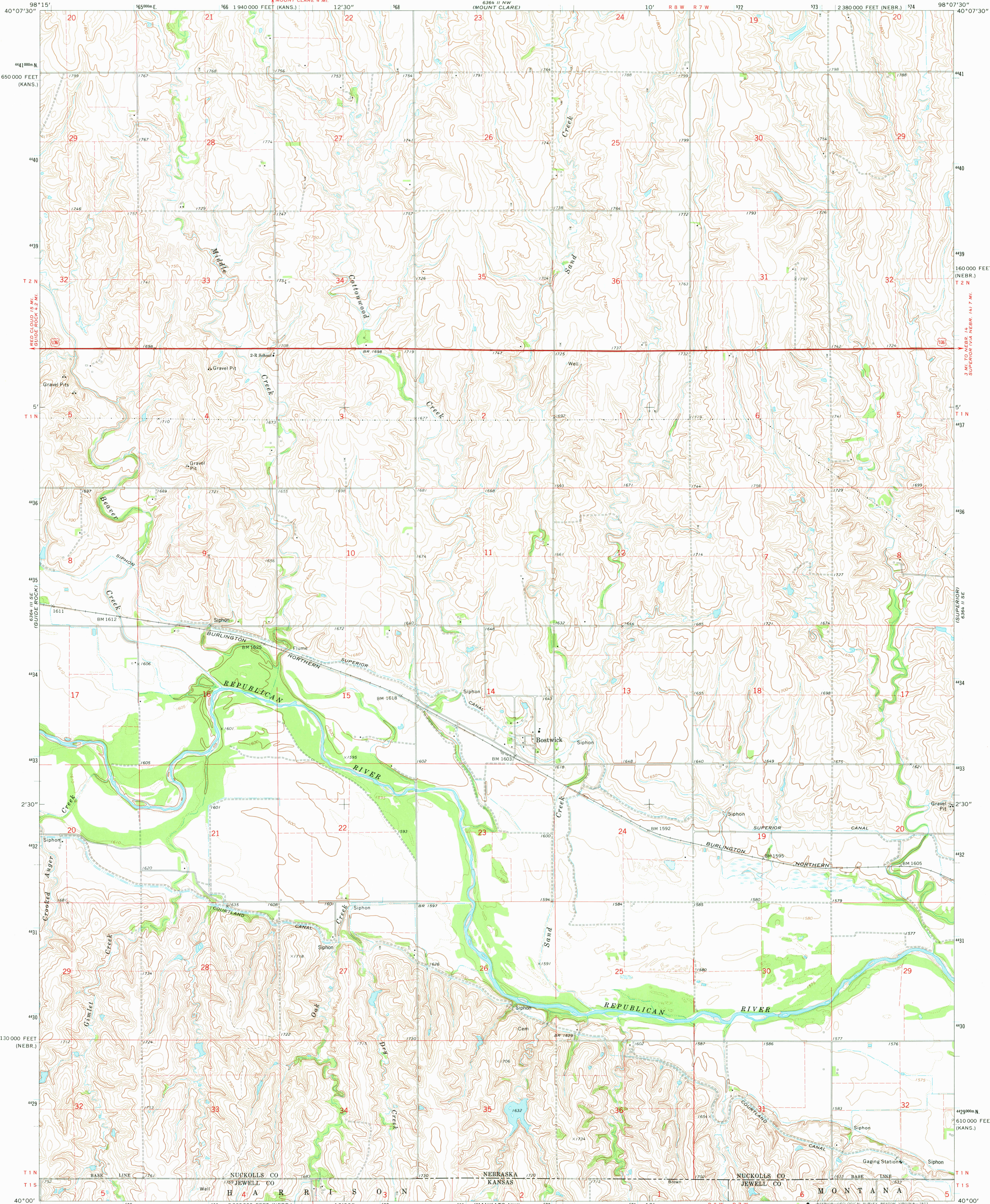


UNITED STATES
DEPARTMENT OF THE INTERIOR
GEOLOGICAL SURVEY

BOSTWICK QUADRANGLE
NEBRASKA-KANSAS
7.5 MINUTE SERIES (TOPOGRAPHIC)



Mapped, edited, and published by the Geological Survey

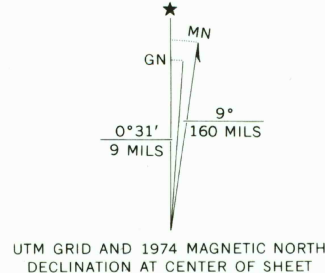
Control by USGS and NOS/NOAA

Topography of Nebraska area by photogrammetric methods from aerial photographs taken 1973. Field checked 1974
Topography of Kansas area by photogrammetric methods from aerial photographs taken 1967. Revised from aerial photographs taken 1973. Field checked 1974

Projection: Nebraska coordinate system, south zone

10,000-foot grid ticks based on Nebraska coordinate system, south zone, and Kansas coordinate system, north zone
1000-metre Universal Transverse Mercator grid ticks, zone 14, shown in blue. 1927 North American datum

Fine red dashed lines indicate selected fence and field lines where generally visible on aerial photographs. This information is unchecked



CONTOUR INTERVAL 10 FEET
DOTTED LINES REPRESENT 5-FOOT CONTOURS
NATIONAL GEODETIC VERTICAL DATUM OF 1929

THIS MAP COMPLIES WITH NATIONAL MAP ACCURACY STANDARDS
FOR SALE BY U. S. GEOLOGICAL SURVEY, DENVER, COLORADO 80225, OR RESTON, VIRGINIA 22092
AND STATE GEOLOGICAL SURVEY, LAWRENCE, KANSAS 66044
A FOLDER DESCRIBING TOPOGRAPHIC MAPS AND SYMBOLS IS AVAILABLE ON REQUEST

ROAD CLASSIFICATION

| | |
|---------------------------------|---|
| Primary highway, hard surface | Light-duty road, hard or improved surface |
| Secondary highway, hard surface | Unimproved road |
| Interstate Route | U. S. Route |
| | State Route |



BOSTWICK, NEBR.-KANS.
N4000-W9807.5/7.5

USGS
Historical File
Topographic Division

1974
AMS 6564 II SW-SERIES V875

2800
JAN 13 1978