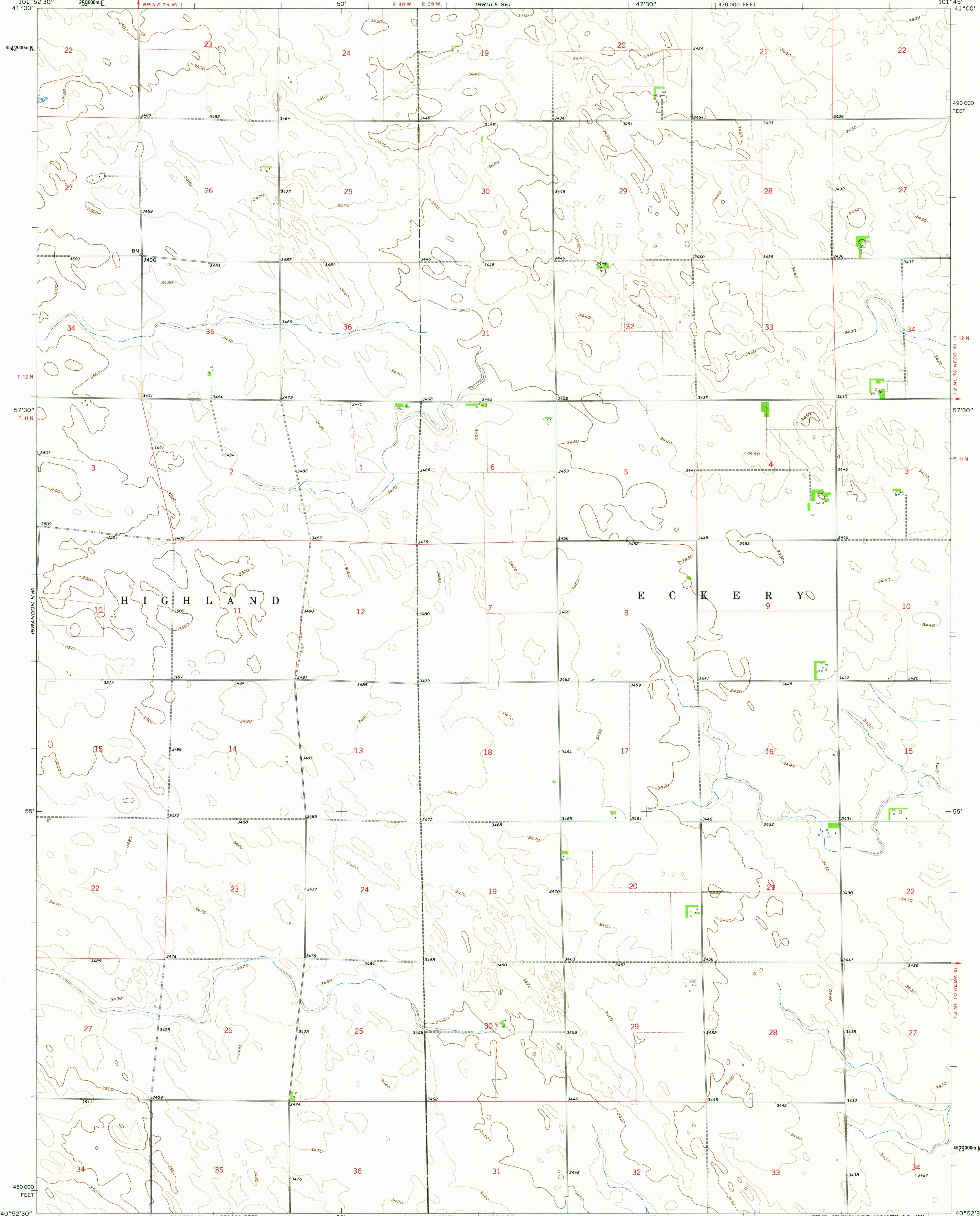


1:62,500
1:125,000



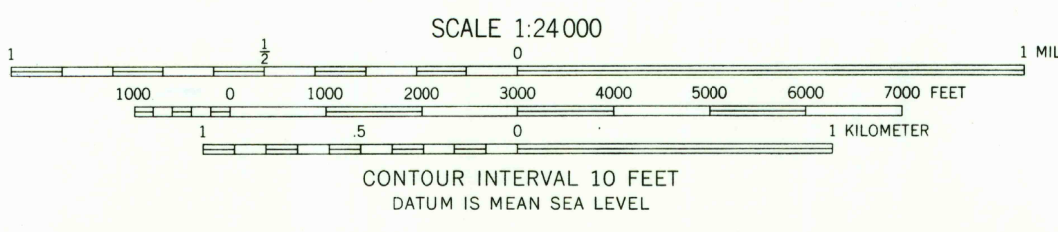
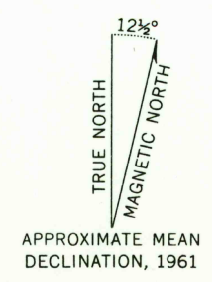
Mapped, edited, and published by the Geological Survey

as part of the Department of the Interior program
for the development of the Missouri River Basin
Control by USGS and USC&GS

Topography by photogrammetric methods from aerial
photographs taken 1959. Field checked 1961

Polyconic projection. 1927 North American datum
10,000-foot grid based on Nebraska coordinate system, south zone
1000-meter Universal Transverse Mercator grid ticks,
zone 14, shown in blue

Fine red dashed lines indicate selected fence and field lines where
generally visible on aerial photographs. This information is unchecked



ROAD CLASSIFICATION
Light-duty ——— Unimproved dirt - - - - -

U.S.G.S.
FILE COPY
TOPOGRAPHIC DIVISION

BRANDON NE, NEBR.
N4052.5—W10145/7.5

THIS MAP COMPLIES WITH NATIONAL MAP ACCURACY STANDARDS
FOR SALE BY U. S. GEOLOGICAL SURVEY, DENVER 25, COLORADO OR WASHINGTON 25, D. C.
A FOLDER DESCRIBING TOPOGRAPHIC MAPS AND SYMBOLS IS AVAILABLE ON REQUEST

USGS
Historical File
Topographic Division

MAY - 2 1963
MAY - 2 1963
2200