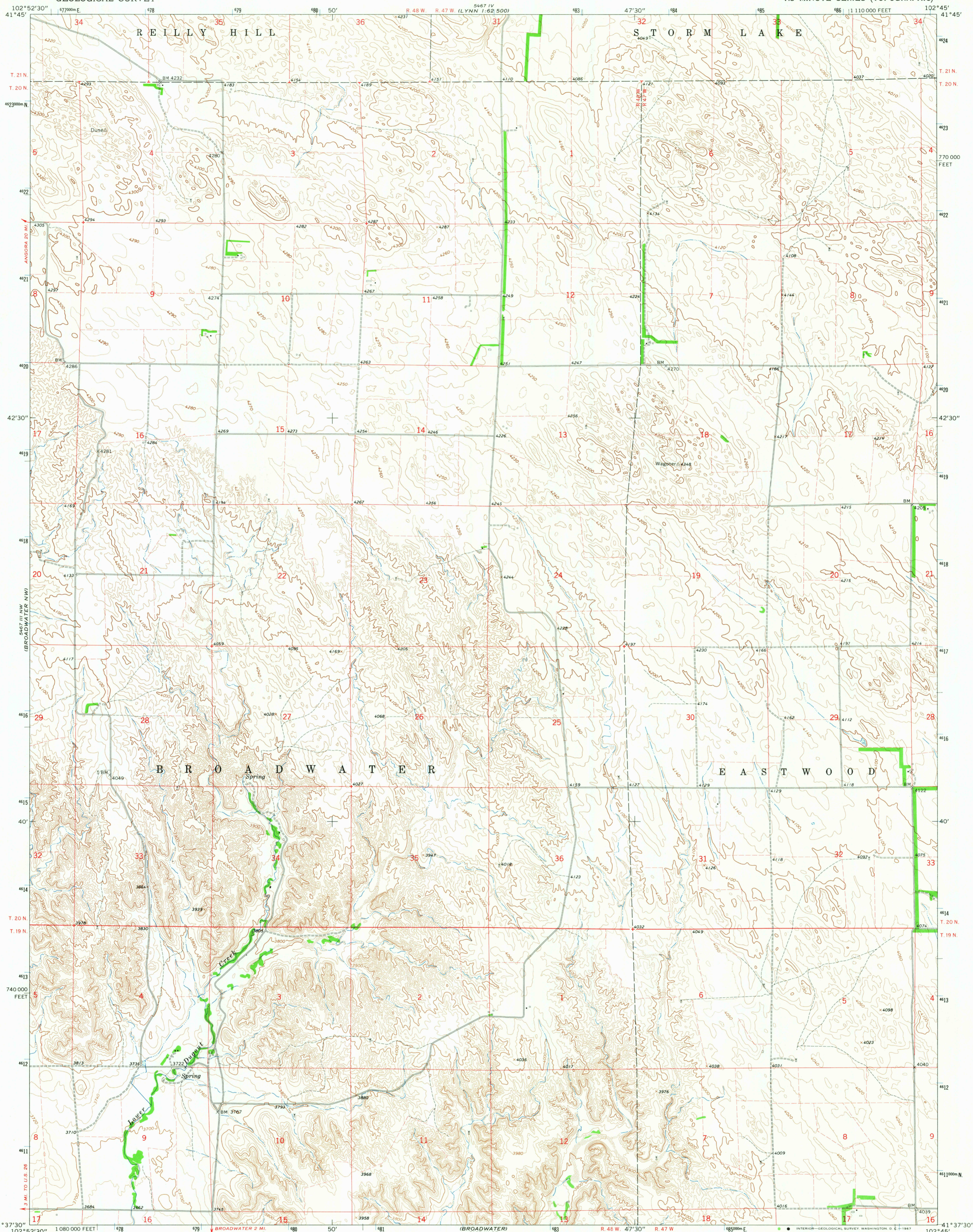


AMS 5467 III NE
1:24,000



Mapped, edited, and published by the Geological Survey as part of the Department of the Interior program for the development of the Missouri River Basin Control by USGS and USC&GS

Topography by photogrammetric methods from aerial photographs taken 1963. Field checked 1965

Polyconic projection. 1927 North American datum 10,000-foot grid based on Nebraska coordinate system, south zone 1000-meter Universal Transverse Mercator grid ticks, zone 13, shown in blue

Fine red dashed lines indicate selected fence and field lines where generally visible on aerial photographs. This information is unchecked

UTM GRID AND 1965 MAGNETIC NORTH DECLINATION AT CENTER OF SHEET

SCALE 1:24,000

CONTOUR INTERVAL 20 FEET
DOTTED LINES REPRESENT 10-FOOT CONTOURS
DATUM IS MEAN SEA LEVEL

ROAD CLASSIFICATION
Light-duty ————— Unimproved dirt - - - - -

NEBRASKA
QUADRANGLE LOCATION
U.S.G.S.
BROADWATER NE, NEBR.
N4137.5—W10245/7.5
1965
AMS 5467 III NE—SERIES V875

FOR SALE BY U.S. GEOLOGICAL SURVEY, DENVER, COLORADO 80225, OR WASHINGTON, D. C. 20242
A FOLDER DESCRIBING TOPOGRAPHIC MAPS AND SYMBOLS IS AVAILABLE ON REQUEST

2690
FEB 18 1967
USGS
Historical File
Topographic Division