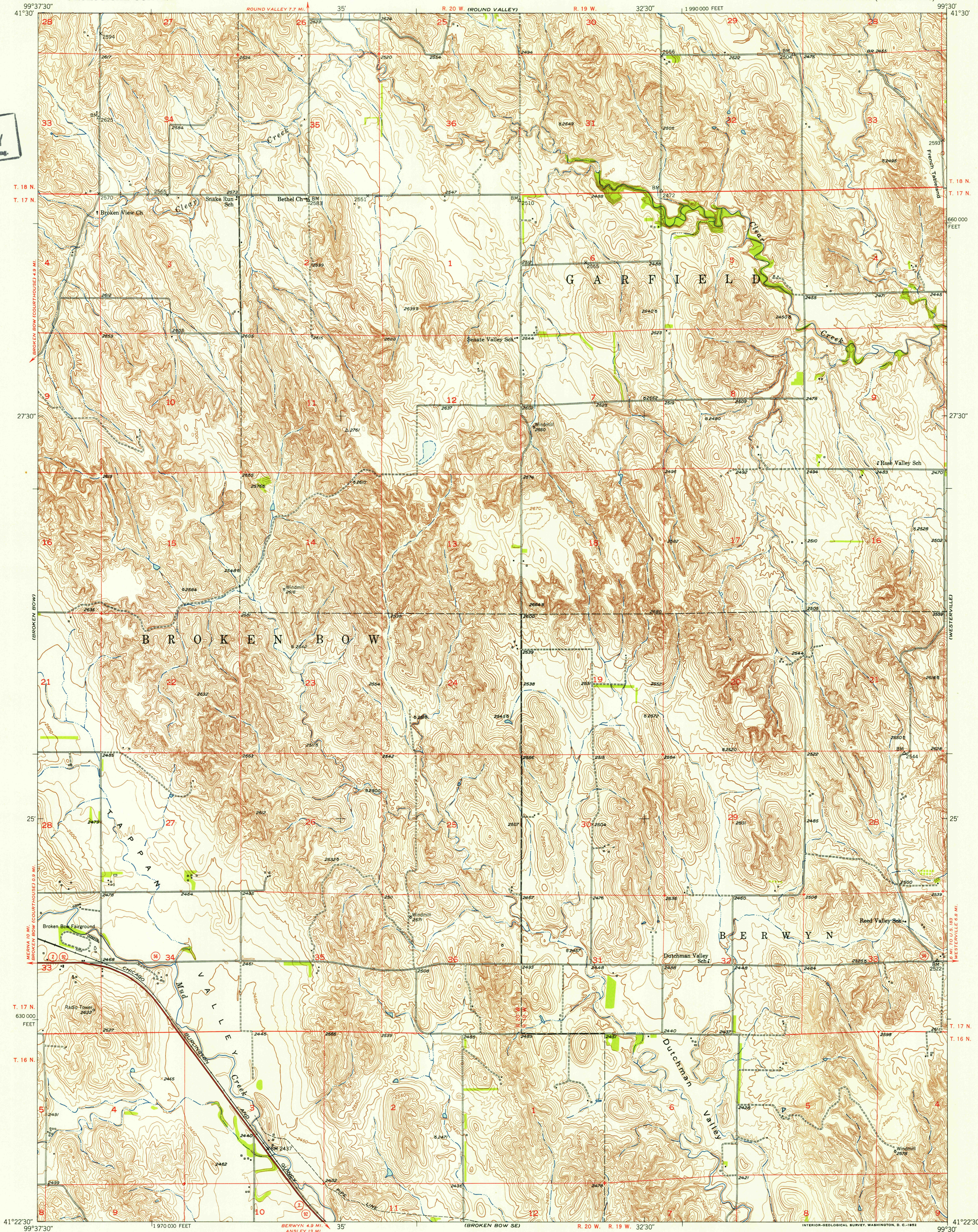


U.S.G.S.
FILE COPY
Imprinted and Publishing.



T. 18 N.
T. 17 N.

T. 18 N.
T. 17 N.

27°30'

27°30'

25'

25'

T. 17 N.
630 000
FEET

T. 17 N.

T. 16 N.

T. 16 N.

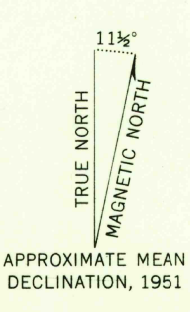
41°22'30"

41°22'30"

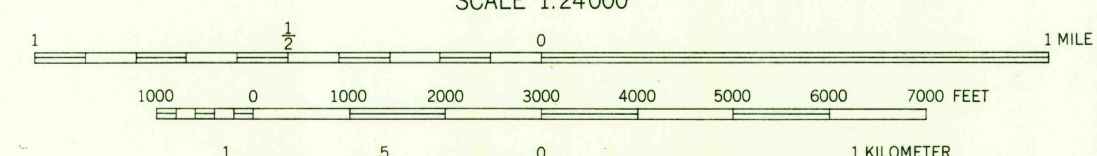
Mapped, edited, and published by the Geological Survey as part of the Department of the Interior program for the development of the Missouri River Basin

Control by USGS and USC&GS
Topography from aerial photographs by multiplex methods and by plane-table surveys 1950. Aerial photographs taken 1949
Field check 1951

Polyconic projection. 1927 North American datum
10,000-foot grid based on Nebraska coordinate system, south zone



APPROXIMATE MEAN DECLINATION, 1951



SCALE 1:24000
CONTOUR INTERVAL 10 FEET
DATUM IS MEAN SEA LEVEL

ROAD CLASSIFICATION

| | | |
|-------------|----------------|-----------------|
| Heavy-duty | 4 LANE 16 LANE | Light-duty |
| Medium-duty | 4 LANE 16 LANE | Unimproved dirt |
| U.S. Route | | State Route |

USGS
Historical File
Topographic Division

U.S.G.S.
FILE COPY
Imprinted and Publishing.

BROKEN BOW NE, NEBR.
N4122.5-W9930.7.5
1951

THIS MAP COMPLIES WITH NATIONAL MAP ACCURACY STANDARDS
FOR SALE BY U. S. GEOLOGICAL SURVEY, FEDERAL CENTER, DENVER, COLORADO OR WASHINGTON 25, D. C.
A FOLDER DESCRIBING TOPOGRAPHIC MAPS AND SYMBOLS IS AVAILABLE ON REQUEST