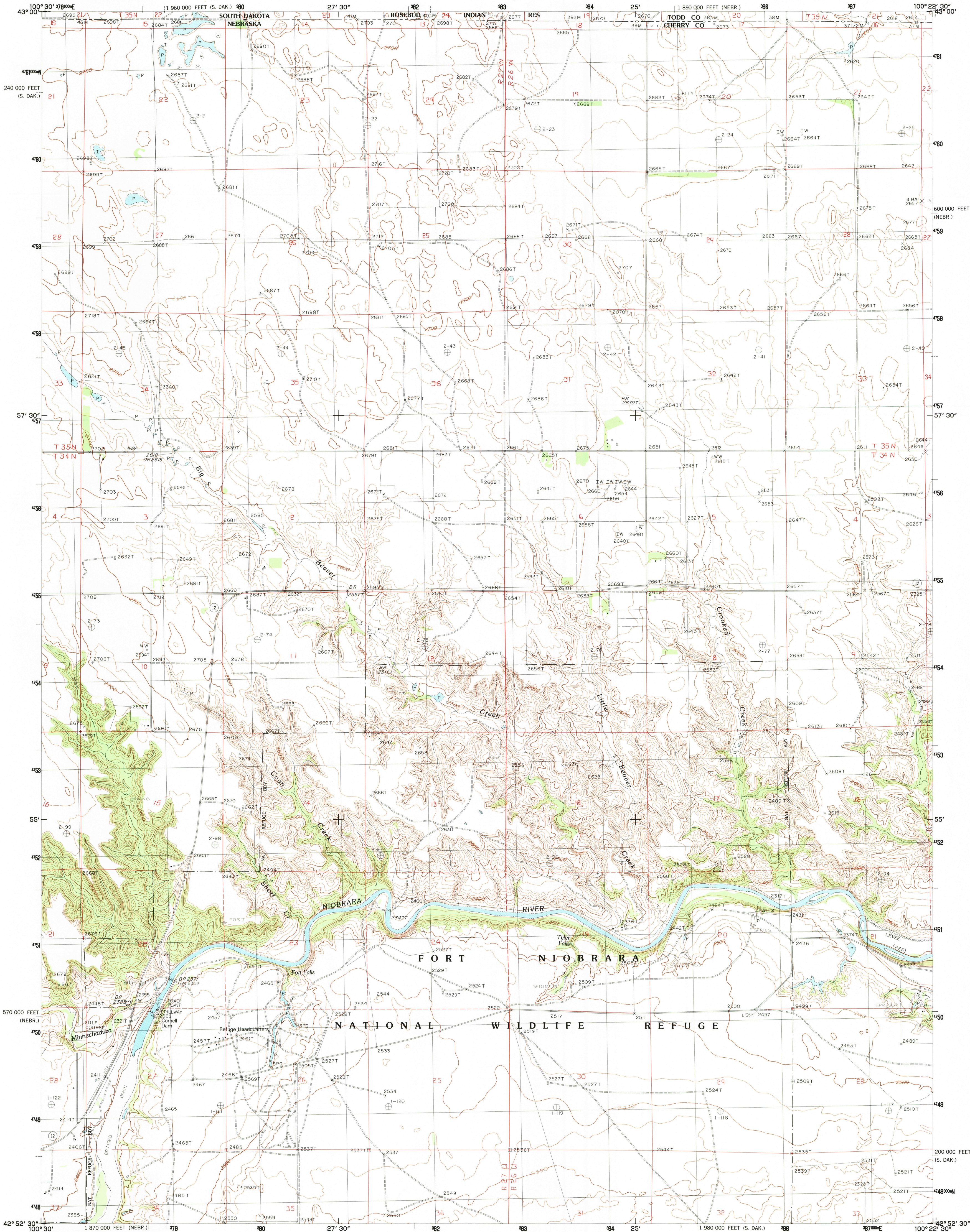


UNITED STATES
DEPARTMENT OF THE INTERIOR
GEOLOGICAL SURVEY

CORNELL DAM QUADRANGLE
NEBRASKA-SOUTH DAKOTA
7.5 MINUTE SERIES (TOPOGRAPHIC)



PRODUCED BY THE UNITED STATES GEOLOGICAL SURVEY
CONTROL BY USGS AND NOS/NOAA
COMPILED FROM AERIAL PHOTOGRAPHS TAKEN 1977
FIELD CHECKED 1980. MAP EDITED 1982
PROJECTION LAMBERT CONFORMAL CONIC
GRID: 1000-METER UNIVERSAL TRANSVERSE MERCATOR ZONE 14
10,000-FOOT STATE GRID TICKS NEBRASKA, NORTH ZONE
AND SOUTH DAKOTA, SOUTH ZONE
UTM GRID DECLINATION 0°59' WEST
1983 MAGNETIC NORTH DECLINATION 9°30' EAST
HORIZONTAL DATUM NATIONAL GEODETIC VERTICAL DATUM OF 1929
To place on the predicted North American Datum of 1983,
move the projection lines as shown by dashed corner ticks
(6 meters north and 35 meters east)
There may be private inholdings within the boundaries of any
Federal and State reservations shown on this map

PROVISIONAL MAP
Produced from original
manuscript drawings. Informa-
tion shown as of date of
field check.

SCALE 1:24 000

1 5 0 5 10 15 20 25 30 35 40 45 50 55 60 65 70 75 80 85 90 95 100

1000 0 1000 2000 3000 4000 5000 6000 7000 8000 9000 10 000

1 5 0 5 10 15 20 25 30 35 40 45 50 55 60 65 70 75 80 85 90 95 100

1000 0 1000 2000 3000 4000 5000 6000 7000 8000 9000 10 000

CONTOUR INTERVAL 20 FEET
SUPPLEMENTARY CONTOUR INTERVAL 10 FEET

To convert feet to meters multiply by .3048
To convert meters to feet multiply by 3.2808

THIS MAP COMPLIES WITH NATIONAL MAP ACCURACY STANDARDS
FOR SALE BY U.S. GEOLOGICAL SURVEY, DENVER, COLORADO 80225, OR RESTON, VIRGINIA 22092

ROAD LEGEND

Improved Road
Unimproved Road
Trail
Interstate Route U. S. Route State Route

NEBRASKA

QUADRANGLE LOCATION

1	2	3	1 Olsonville SE
4	5	6	2 Littleburg
7	8	9	3 Hidden Timber SE
10	11	12	4 Valentine North
13	14	15	5 Sparks
16	17	18	6 Valentine South
19	20	21	7 Thatcher
22	23	24	8 Sparks SE

ADJOINING 7.5 QUADRANGLE NAMES

CORNELL DAM, NEBR.-S. DAK.
PROVISIONAL EDITION 1983

42100-H4-TF-024

RETURN TO:
USGS NHD HISTORICAL MAP ARCHIVES