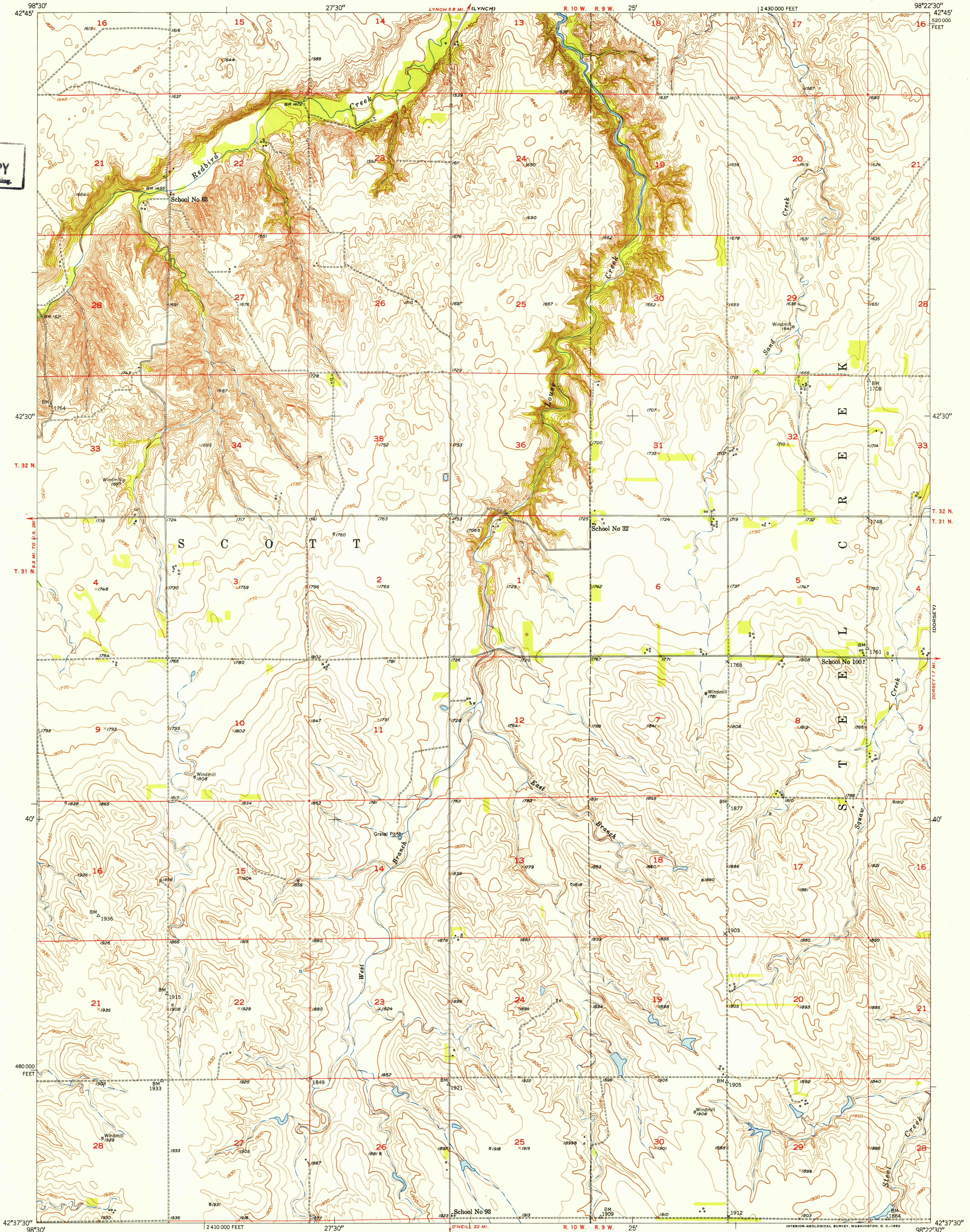
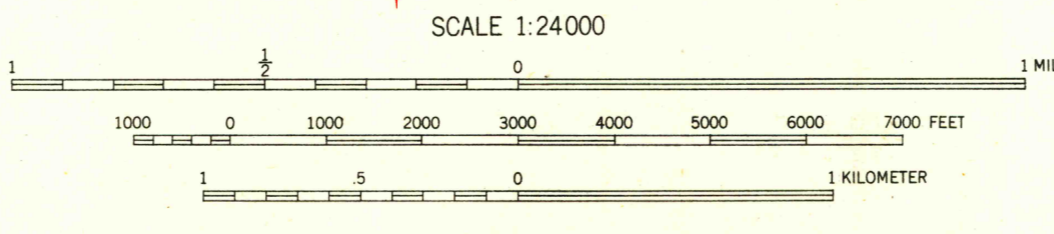


U. S. G. S.
FILE COPY
Inspection and Editing.



Mapped, edited, and published by the Geological Survey as part of the Department of the Interior program for the development of the Missouri River Basin. Control by USGS and USC&GS. Topography by multiplex methods from aerial photographs taken 1946 and by plane-table surveys 1950. Field check 1950. Polyconic projection. 1927 North American datum. 10,000-foot grid based on Nebraska coordinate system, north zone.



ROAD CLASSIFICATION
Heavy-duty 4 LANE LANE Light-duty
Medium-duty 4 LANE LANE Unimproved dirt
U. S. Route State Route

THIS MAP COMPLIES WITH NATIONAL MAP ACCURACY STANDARDS
FOR SALE BY U. S. GEOLOGICAL SURVEY, FEDERAL CENTER, DENVER, COLORADO OR WASHINGTON 25, D. C.
A FOLDER DESCRIBING TOPOGRAPHIC MAPS AND SYMBOLS IS AVAILABLE ON REQUEST

U. S. G. S.
FILE COPY
Inspection and Editing.

DORSEY NW, NEBR.
N4237.5-W9822.5/7.5
1950