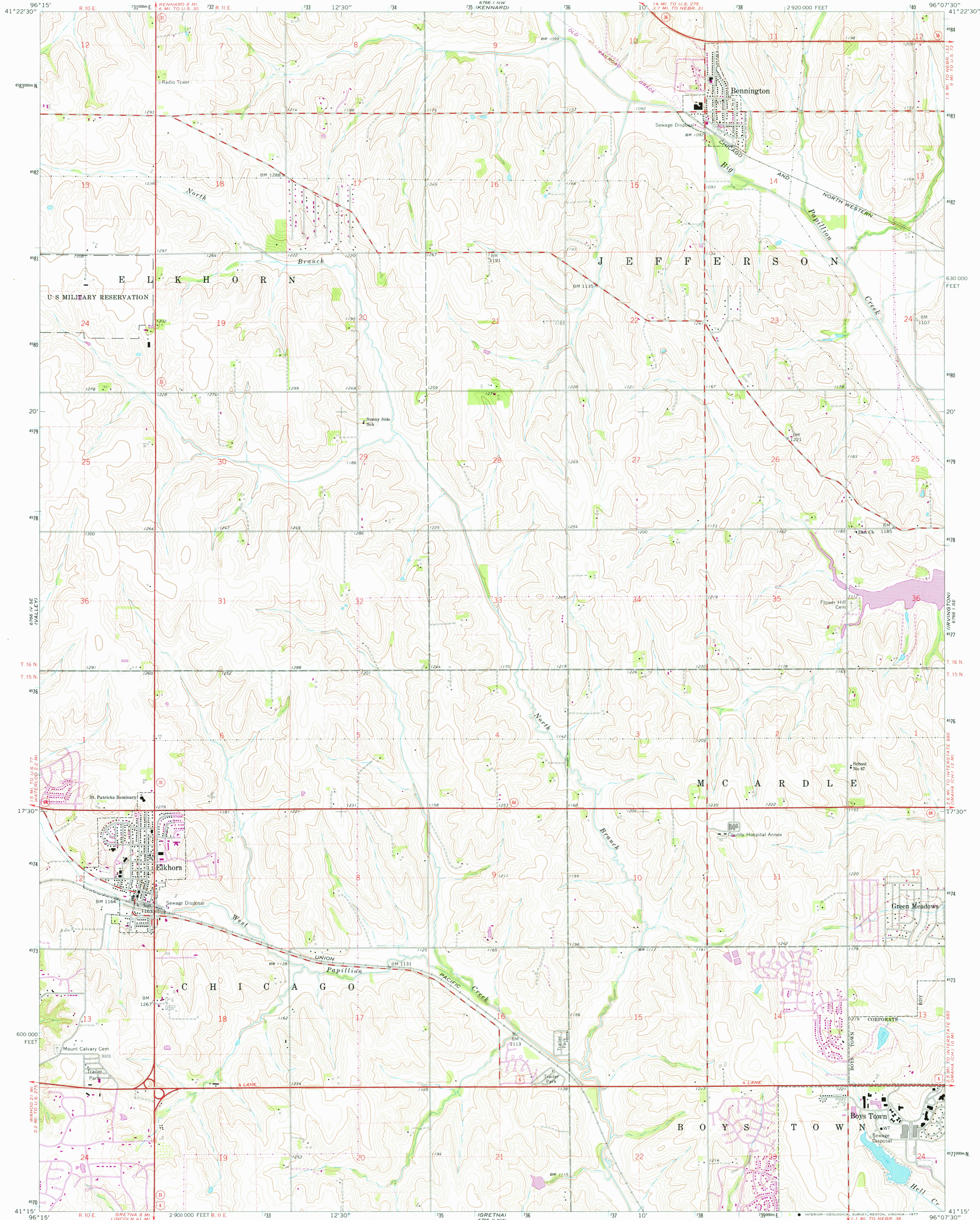


6766 I SW  
ARLINGTON

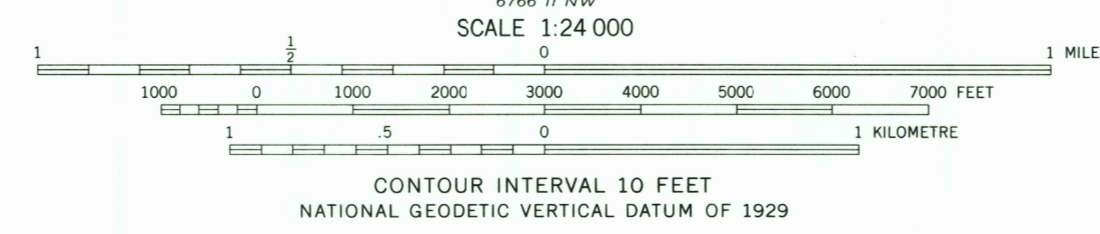
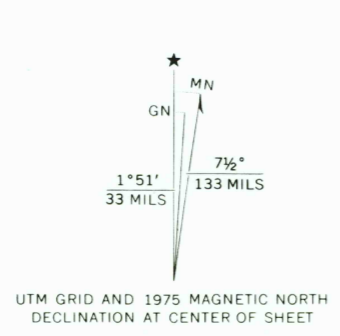
UNITED STATES  
DEPARTMENT OF THE INTERIOR  
GEOLOGICAL SURVEY

ELKHORN QUADRANGLE  
NEBRASKA—DOUGLAS CO.  
7.5 MINUTE SERIES (TOPOGRAPHIC)

6766 N  
FOR CALFORNIA



Mapped, edited, and published by the Geological Survey as part of the Department of the Interior program for the development of the Missouri River Basin. Control by USGS and USC&GS. Topography by photogrammetric methods from aerial photographs taken 1966. Field checked 1968. Polyconic projection. 1927 North American datum 10,000-foot grid based on Nebraska coordinate system, south zone 1000-metre Universal Transverse Mercator grid ticks, zone 14, shown in blue. Fine red dashed lines indicate selected fence and field lines where generally visible on aerial photographs. This information is unchecked. Revisions shown in purple compiled from aerial photographs taken 1975. This information not field checked.



ROAD CLASSIFICATION

Primary highway, all weather, hard surface	Light-duty road, all weather, improved surface
Secondary highway, all weather, hard surface	Unimproved road, fair or dry weather
U.S. Route	State Route

THIS MAP COMPLIES WITH NATIONAL MAP ACCURACY STANDARDS FOR SALE BY U.S. GEOLOGICAL SURVEY, DENVER, COLORADO 80225, OR RESTON, VIRGINIA 22092. A FOLDER DESCRIBING TOPOGRAPHIC MAPS AND SYMBOLS IS AVAILABLE ON REQUEST.

ELKHORN, NEBR.  
N4115—W9607.5/7.5  
AUG 2 2 1977

USGS  
Historical File  
Topographic Division

1968  
PHOTOREVISED 1975  
AMS 6766 I SW—SERIES V875

3300