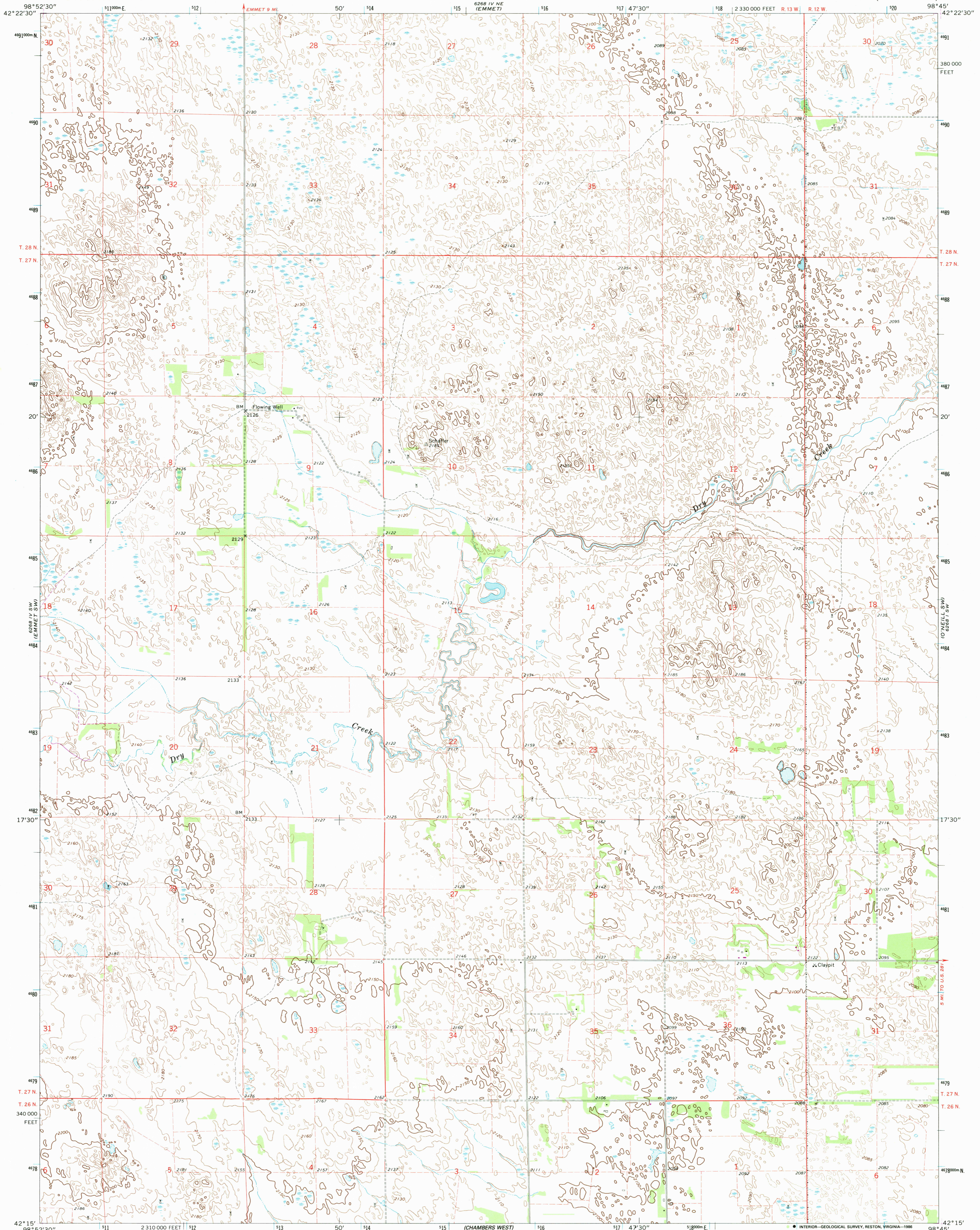
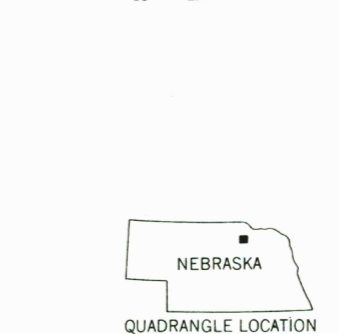
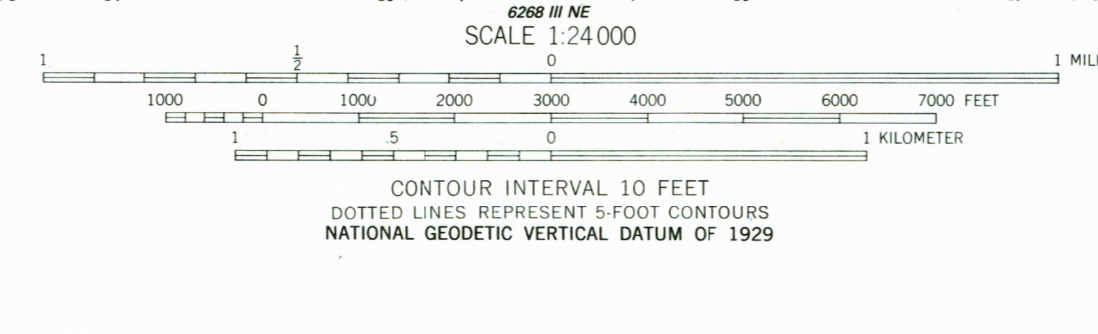
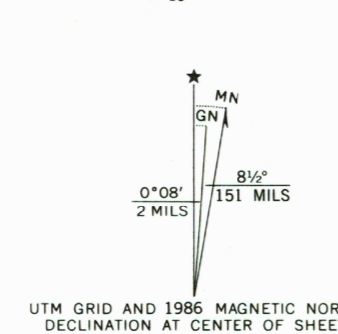


UNITED STATES  
DEPARTMENT OF THE INTERIOR  
GEOLOGICAL SURVEY

EMMET SE QUADRANGLE  
NEBRASKA—HOLT CO.  
7.5 MINUTE SERIES (TOPOGRAPHIC)



Mapped, edited, and published by the Geological Survey as part of the Department of the Interior program for the development of the Missouri River Basin  
Control by USGS and USC&GS  
Topography by photogrammetric methods from aerial photographs taken 1963. Field checked 1964  
Polyconic projection. 1927 North American datum 10,000-foot grid based on Nebraska coordinate system, north zone 1000-meter Universal Transverse Mercator grid ticks, zone 14, shown in blue  
To place on the predicted North American Datum 1983, move the projection lines 5 meters north and 31 meters east as shown by dashed corner ticks  
Revisions shown in purple and woodland compiled from aerial photographs taken 1984 and other sources  
This information not field checked. Map edited 1986



ROAD CLASSIFICATION  
Light-duty ————— Unimproved dirt - - - - -  
EMMET SE, NEBR.  
42098-C7-TF-024  
1964  
PHOTOREVISED 1986  
DMA 6268 IV SE-SERIES 9875

4988  
NEBRASKA HISTORICAL MAP  
JUN 20 1986  
RESP FILE COPY