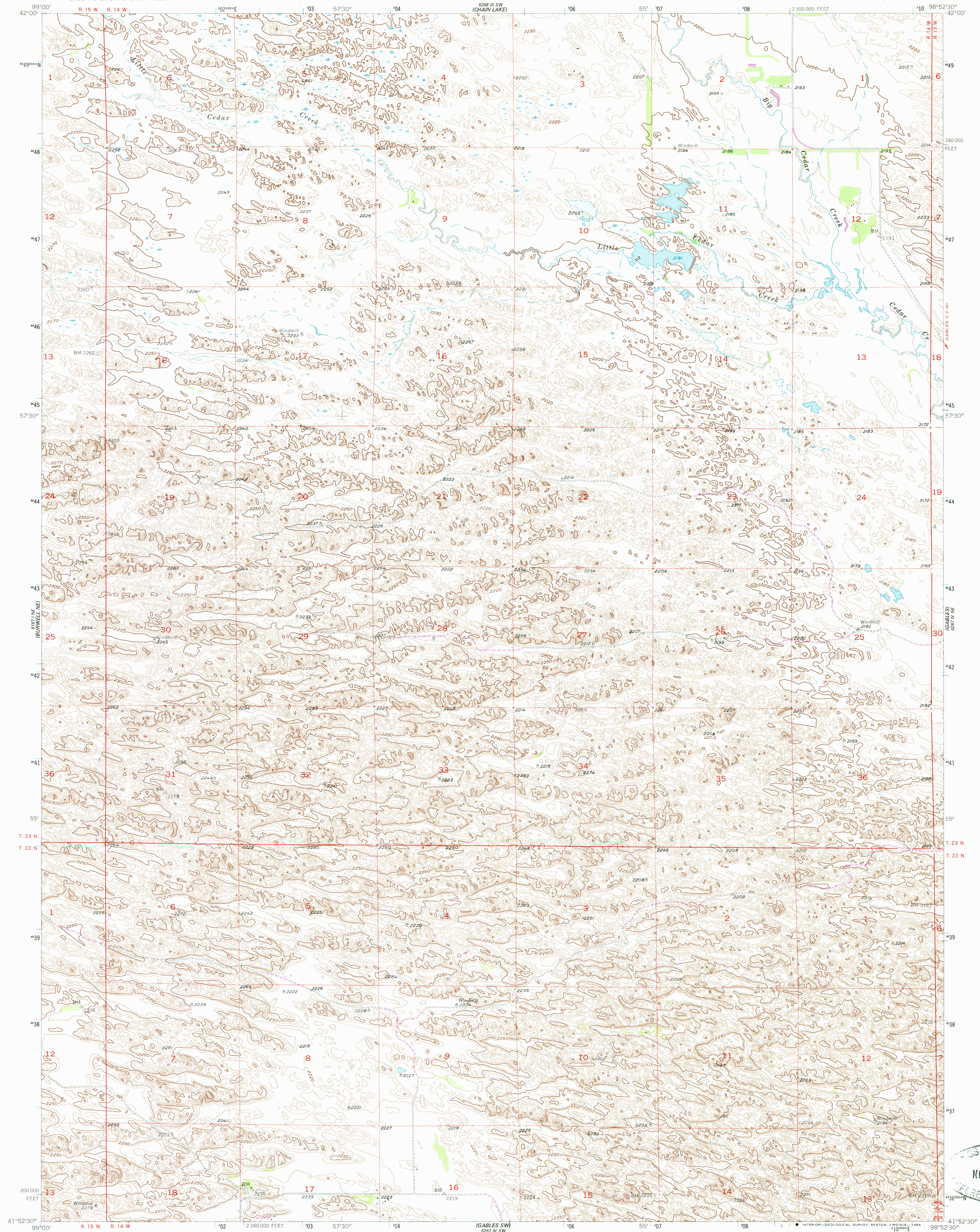
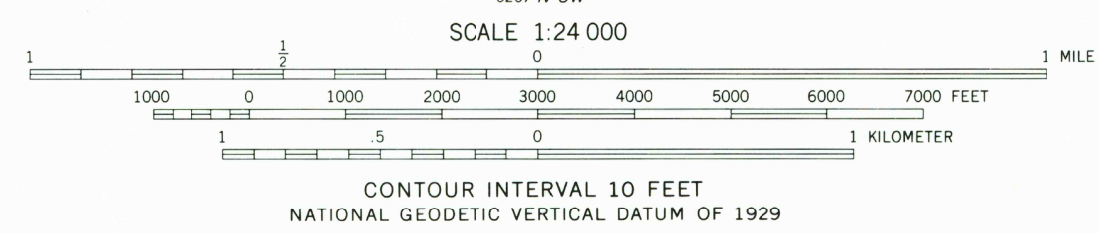
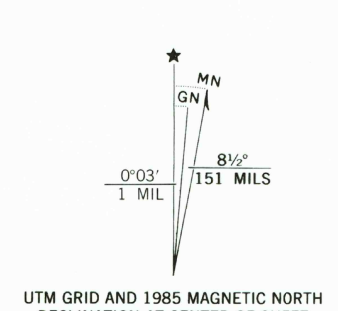


UNITED STATES  
DEPARTMENT OF THE INTERIOR  
GEOLOGICAL SURVEY

GABLES NW QUADRANGLE  
NEBRASKA—GARFIELD CO.  
7.5 MINUTE SERIES (TOPOGRAPHIC)



Mapped, edited, and published by the Geological Survey as part of the Department of the Interior program for the development of the Missouri River Basin Control by USGS and USC&GS  
Topography from aerial photographs by photogrammetric methods  
Aerial photographs taken 1951. Field check 1954  
Polyconic projection. 1927 North American datum  
10,000-foot grid based on Nebraska coordinate system, north zone  
1000-meter Universal Transverse Mercator grid ticks, zone 14, shown in blue  
To place on the predicted North American Datum 1983, move the projection lines 5 meters north and 31 meters east as shown by dashed corner ticks



ROAD CLASSIFICATION

Primary highway, hard surface	Light-duty road, hard or improved surface
Secondary highway, hard surface	Unimproved road
Interstate Route	U. S. Route
	State Route



GABLES NW, NEBR.  
41098-H8-TF-024  
1954  
PHOTOREVISED 1985  
DMA 6267 IV NW—SERIES V875

THIS MAP COMPLIES WITH NATIONAL MAP ACCURACY STANDARDS FOR SALE BY U. S. GEOLOGICAL SURVEY, DENVER, COLORADO 80225, OR RESTON, VIRGINIA 22092 A FOLDER DESCRIBING TOPOGRAPHIC MAPS AND SYMBOLS IS AVAILABLE ON REQUEST

Revisions shown in purple and woodland compiled from aerial photographs taken 1981 and other sources This information not field checked. Map edited 1985

