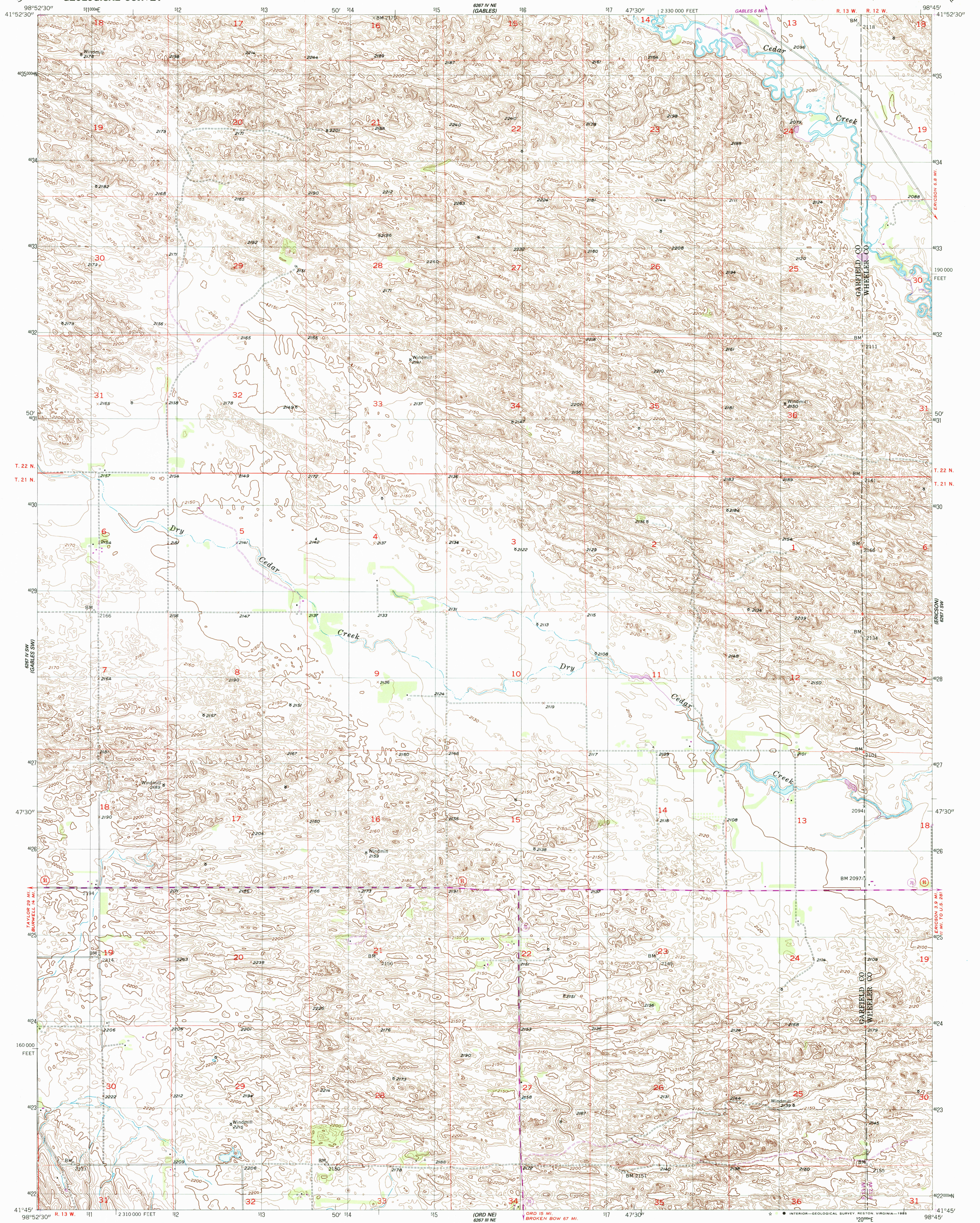
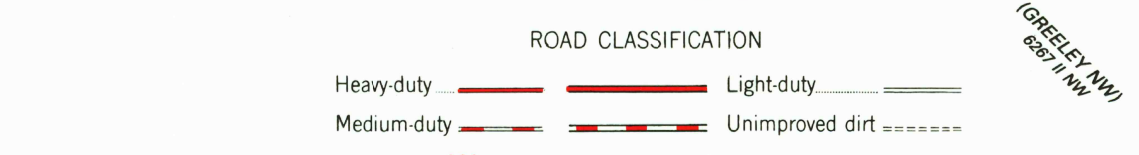
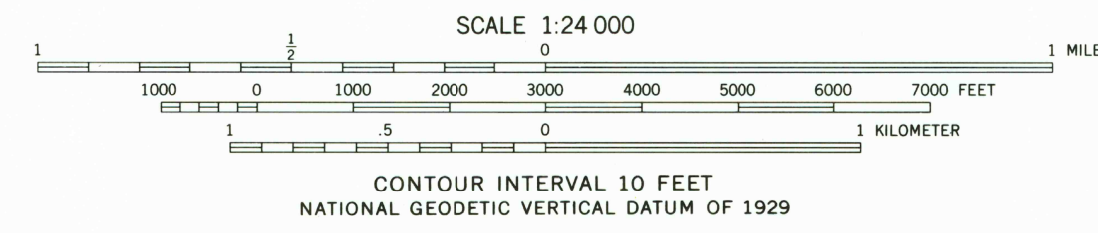
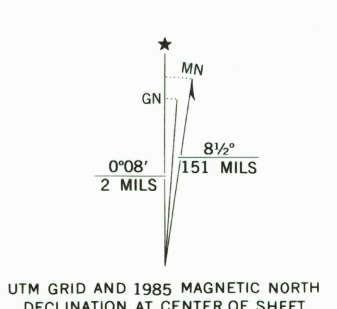


UNITED STATES  
DEPARTMENT OF THE INTERIOR  
GEOLOGICAL SURVEY

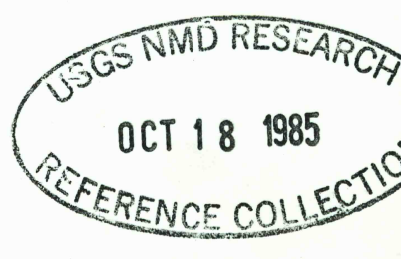
GABLES SE QUADRANGLE  
NEBRASKA  
7.5 MINUTE SERIES (TOPOGRAPHIC)



Mapped, edited, and published by the Geological Survey as part of the Department of the Interior program for the development of the Missouri River Basin Control by USGS and USC&GS  
Topography from aerial photographs by photogrammetric methods  
Aerial photographs taken 1951. Field check 1954  
Polyconic projection. 1927 North American datum 10,000-foot grid based on Nebraska coordinate system, north zone  
1000-meter Universal Transverse Mercator grid, zone 14  
To place on the predicted North American Datum 1983, move the projection lines 5 meters north and 31 meters east as shown by dashed corner ticks  
Revisions shown in purple and woodland compiled from aerial photographs taken 1981 and other sources  
This information not field checked. Map edited 1985



GABLES SE, NEBR.  
41098-G7-TF-024  
1954  
PHOTOREVISED 1985  
DMA 6267 IV SE-SERIES V875



THIS MAP COMPLIES WITH NATIONAL MAP ACCURACY STANDARDS  
FOR SALE BY U.S. GEOLOGICAL SURVEY, DENVER, COLORADO 80225, OR RESTON, VIRGINIA 22092  
A FOLDER DESCRIBING TOPOGRAPHIC MAPS AND SYMBOLS IS AVAILABLE ON REQUEST