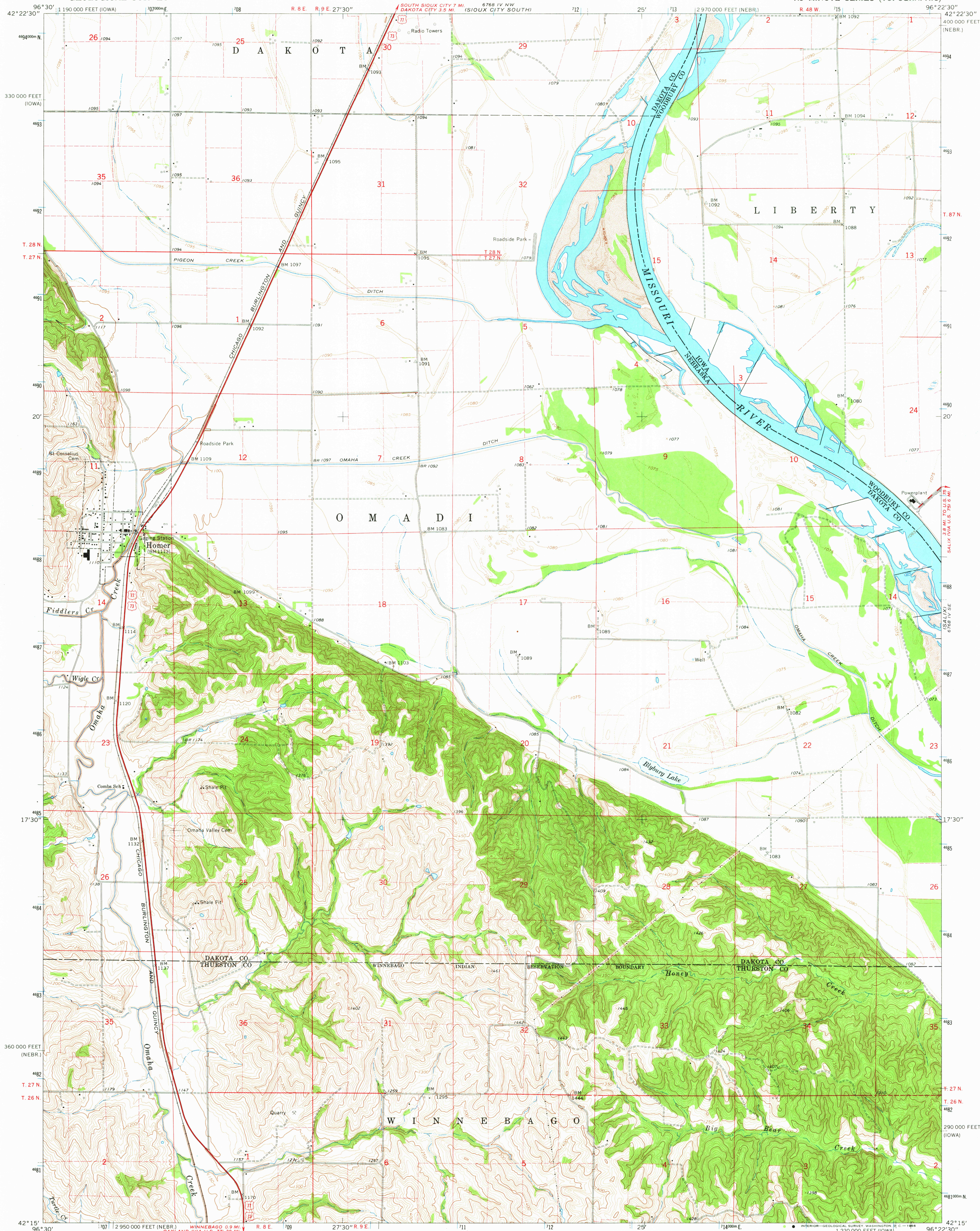


UNITED STATES  
DEPARTMENT OF THE INTERIOR  
GEOLOGICAL SURVEY

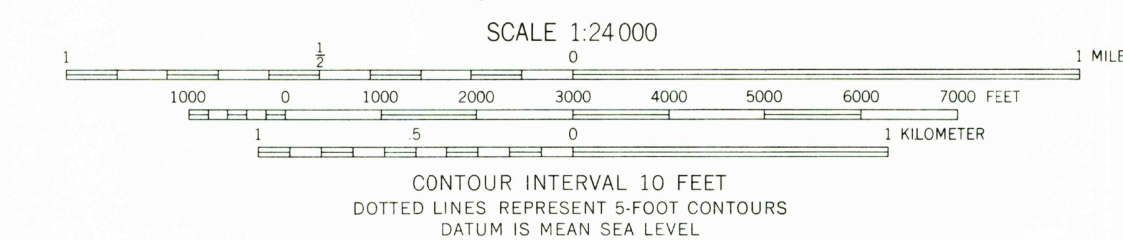
HOMER QUADRANGLE  
NEBRASKA-IOWA  
7.5 MINUTE SERIES (TOPOGRAPHIC)

6768 IV NE  
(SERGEANT BLUFF)



Mapped, edited, and published by the Geological Survey  
Control by USGS and USC&GS  
Topography by photogrammetric methods from aerial  
photographs taken 1962 and planimetric surveys 1964  
Polyconic projection. 1927 North American datum  
10,000-foot grids based on Nebraska coordinate system, north zone,  
and Iowa coordinate system, north zone  
1000-meter Universal Transverse Mercator grid ticks,  
zone 14, shown in blue  
Fine red dashed lines indicate selected fence and field lines where  
generally visible on aerial photographs. This information is unchecked

UTM GRID AND 1964 MAGNETIC NORTH  
DECLINATION AT CENTER OF SHEET



THIS MAP COMPLIES WITH NATIONAL MAP ACCURACY STANDARDS  
FOR SALE BY U.S. GEOLOGICAL SURVEY, DENVER, COLORADO 80225 OR WASHINGTON, D.C. 20242  
AND BY THE IOWA GEOLOGICAL SURVEY, IOWA CITY, IOWA  
A FOLDER DESCRIBING TOPOGRAPHIC MAPS AND SYMBOLS IS AVAILABLE ON REQUEST



U.S.G.S.  
FILE COPY  
TOPOGRAPHIC DIVISION

HOMER, NEBR.-IOWA  
N4215-W9622.5/7.5

1964  
AMS 6768 IV SW-SERIES V875

USGS  
Historical File  
Topographic Division

2656  
MAR 18 1968