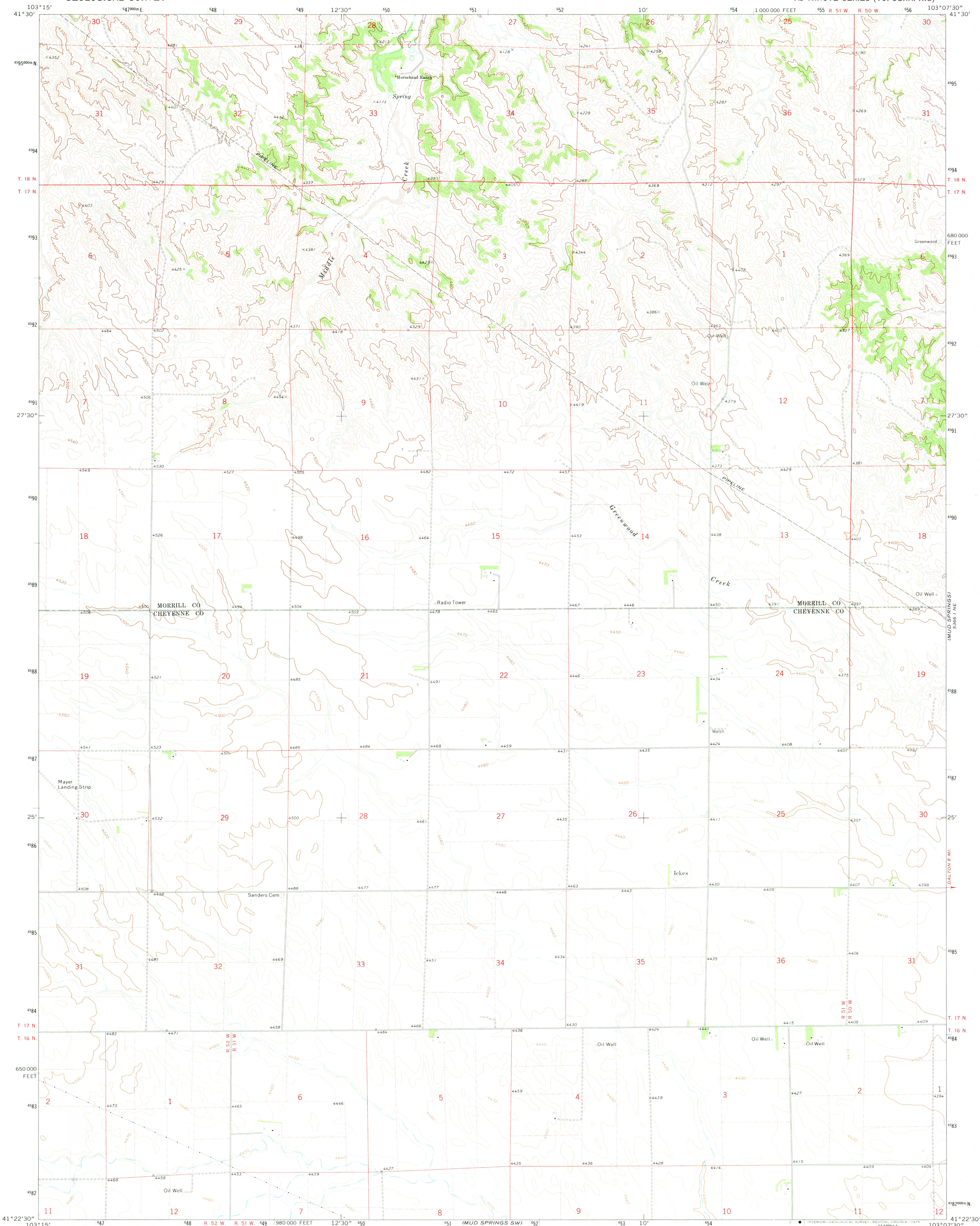
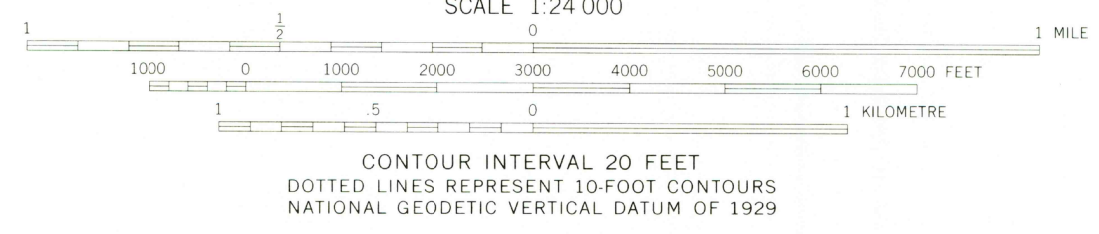
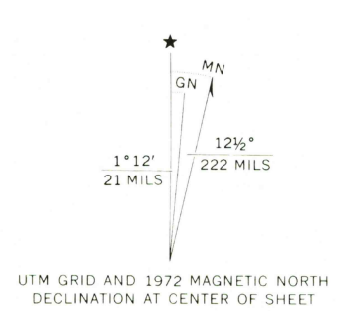


587' 45" SE  
COURTHOUSE ROCK



Mapped, edited, and published by the Geological Survey  
Control by USGS and USC&GS  
Topography by photogrammetric methods from aerial photographs taken 1972. Field checked 1972  
Projection and 10,000-foot grid ticks: Nebraska coordinate system, south zone (Lambert conformal conic)  
1000-metre Universal Transverse Mercator grid ticks, zone 13, shown in blue. 1927 North American datum  
Fine red dashed lines indicate selected fence and field lines where generally visible on aerial photographs. This information is unchecked



ROAD CLASSIFICATION

Primary highway, hard surface	Light-duty road, hard or improved surface
Secondary highway, hard surface	Unimproved road
Interstate Route	U. S. Route
	State Route

THIS MAP COMPLIES WITH NATIONAL MAP ACCURACY STANDARDS  
FOR SALE BY U. S. GEOLOGICAL SURVEY, DENVER, COLORADO 80225, OR RESTON, VIRGINIA 22092  
A FOLDER DESCRIBING TOPOGRAPHIC MAPS AND SYMBOLS IS AVAILABLE ON REQUEST

HORSEHEAD RANCH, NEBR.  
N4122.5-W10307.5/7.5

USGS  
HISTORICAL FILE  
TOPOGRAPHIC DIVISION

1972  
AMS 5366 I NW—SERIES V875

SEP 5 1975

MUD SPRINGS SE  
2300