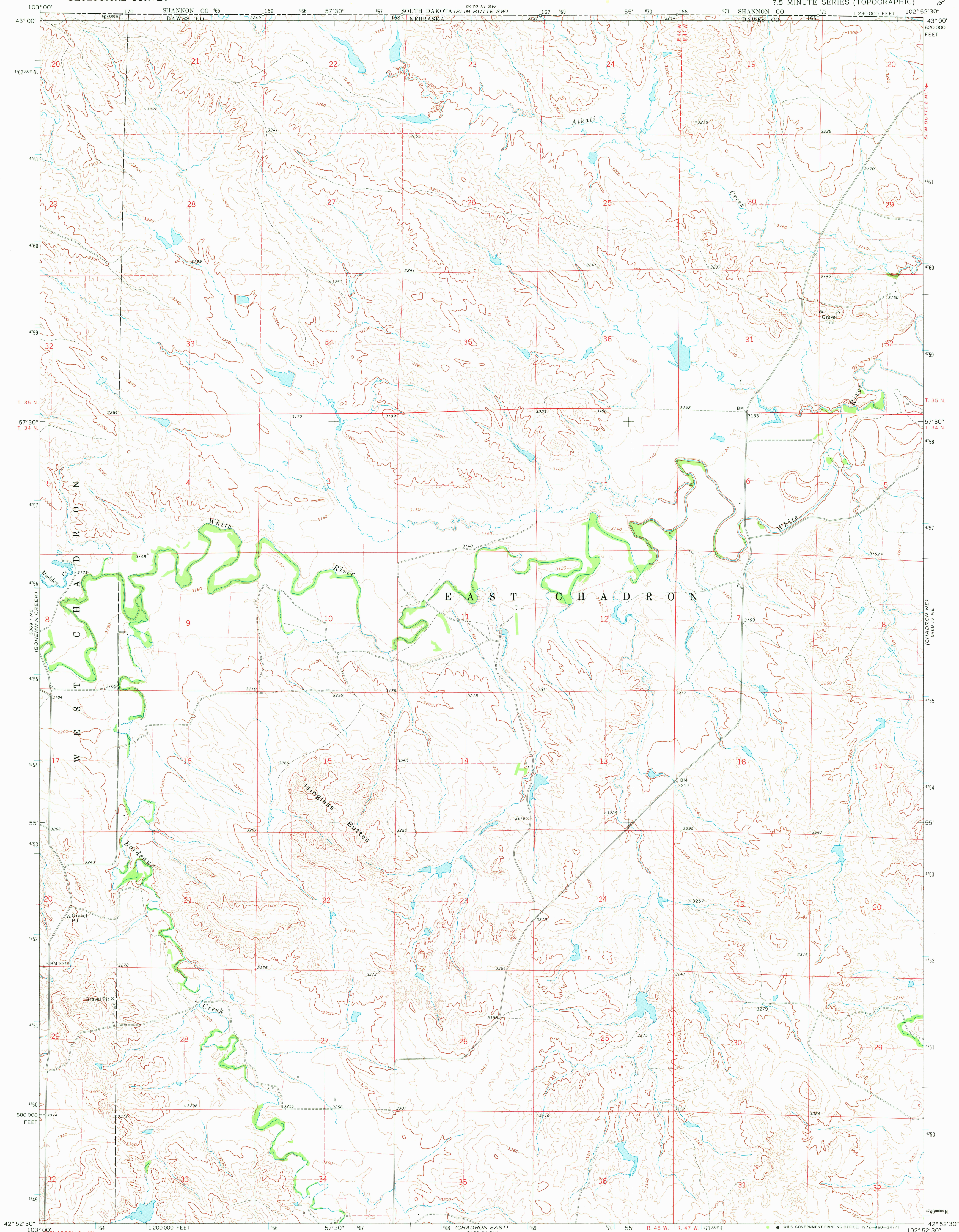


UNITED STATES
DEPARTMENT OF THE INTERIOR
GEOLOGICAL SURVEY

ISINGLASS BUTTES QUADRANGLE
NEBRASKA—DAWES CO.
7.5 MINUTE SERIES (TOPOGRAPHIC)

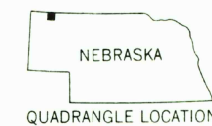
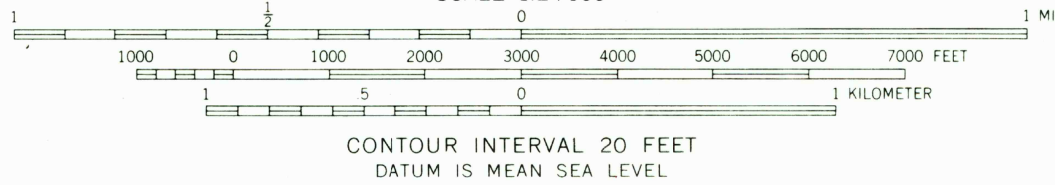
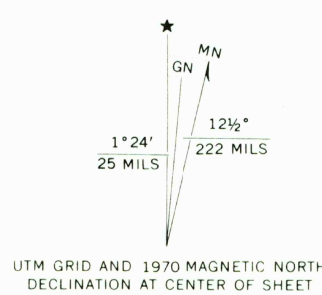


Mapped, edited, and published by the Geological Survey
Control by USGS and USC&GS

Topography by photogrammetric methods from aerial
photographs taken 1966. Field checked 1970

Polyconic projection. 1927 North American datum
10,000-foot grid based on Nebraska coordinate system, north zone
1000-meter Universal Transverse Mercator grid ticks,
zone 13, shown in blue

Fine red dashed lines indicate selected fence and field lines where
generally visible on aerial photographs. This information is unchecked



ROAD CLASSIFICATION
Light duty road, all weather, Unimproved road, fair or dry
improved surface weather

ISINGLASS BUTTES, NEBR.
N4252.5—W10252.5/7.5

1970

AMS 5469 IV NW—SERIES V875

THIS MAP COMPLIES WITH NATIONAL MAP ACCURACY STANDARDS
FOR SALE BY U. S. GEOLOGICAL SURVEY, DENVER, COLORADO 80225, OR WASHINGTON, D. C. 20242
A FOLDER DESCRIBING TOPOGRAPHIC MAPS AND SYMBOLS IS AVAILABLE ON REQUEST

AUG 22 1972

Denver
2000
50 plates

USGS
Historical File
Topographic Division