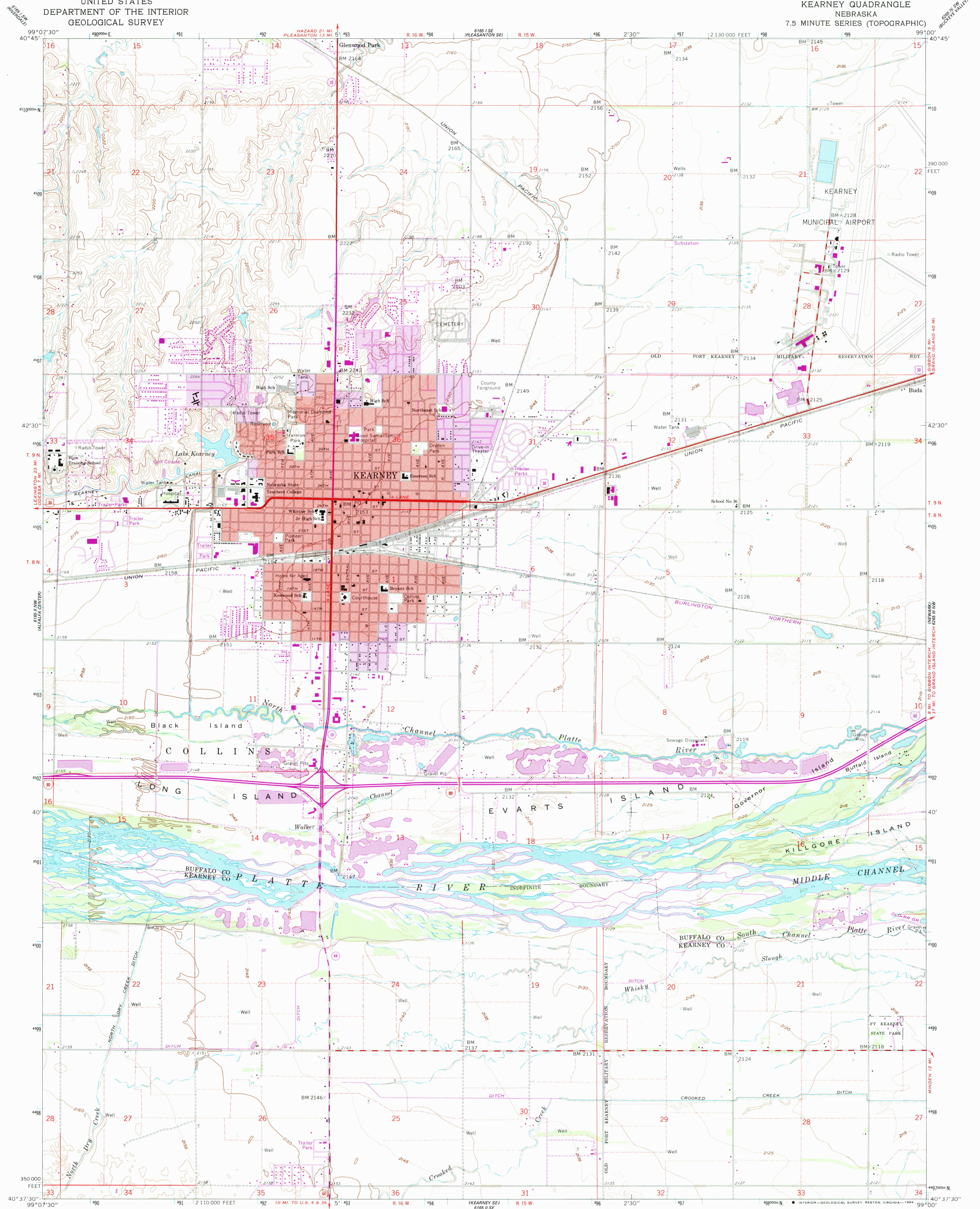
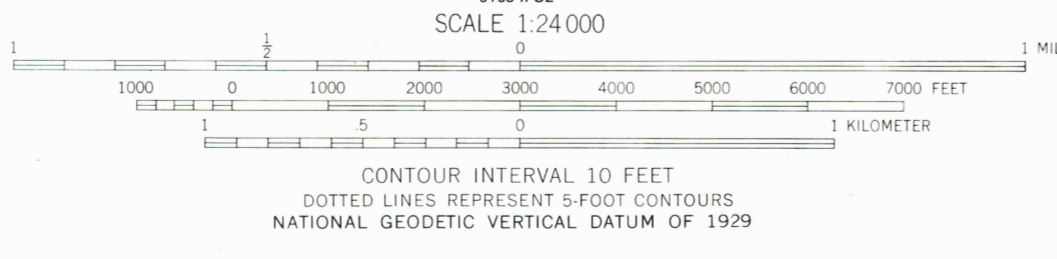
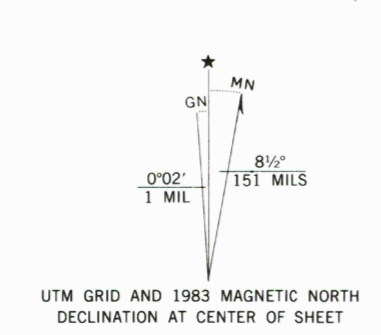


UNITED STATES  
DEPARTMENT OF THE INTERIOR  
GEOLOGICAL SURVEY

KEARNEY QUADRANGLE  
NEBRASKA  
7.5 MINUTE SERIES (TOPOGRAPHIC)



Mapped, edited, and published by the Geological Survey as part of the Department of the Interior program for the development of the Missouri River Basin Control by USGS, USC&GS, and U. S. Bureau of Reclamation. Topography by photogrammetric methods from aerial photographs taken 1951 and planetable surveys 1962. Polyconic projection. 1927 North American datum 10,000-foot grid based on Nebraska coordinate system, south zone 1000-meter Universal Transverse Mercator grid ticks, zone 14, shown in blue. Red tint indicates areas in which only landmark buildings are shown. To place on the predicted North American Datum 1983, move the projection lines 4 meters north and 32 meters east as shown by dashed corner ticks.



ROAD CLASSIFICATION

Heavy-duty	Light-duty
Medium-duty	Unimproved dirt
Interstate Route	U.S. Route
	State Route



THIS MAP COMPLIES WITH NATIONAL MAP ACCURACY STANDARDS FOR SALE BY U. S. GEOLOGICAL SURVEY, DENVER, COLORADO 80225, OR RESTON, VIRGINIA 22092. A FOLDER DESCRIBING TOPOGRAPHIC MAPS AND SYMBOLS IS AVAILABLE ON REQUEST.

Purple tint indicates extension of urban areas. Revisions shown in purple compiled from aerial photographs taken 1981 and other sources. This information not field checked. Map edited 1983. Purple tint indicates extension of urban areas.

KEARNEY, NEBR.  
N4037.5—W9900/7.5  
1962  
PHOTOREVISED 1983  
DMA 6165 II NE—SERIES V875

RETURN TO:  
USGS MAP HISTORICAL MAP ARCHIVES