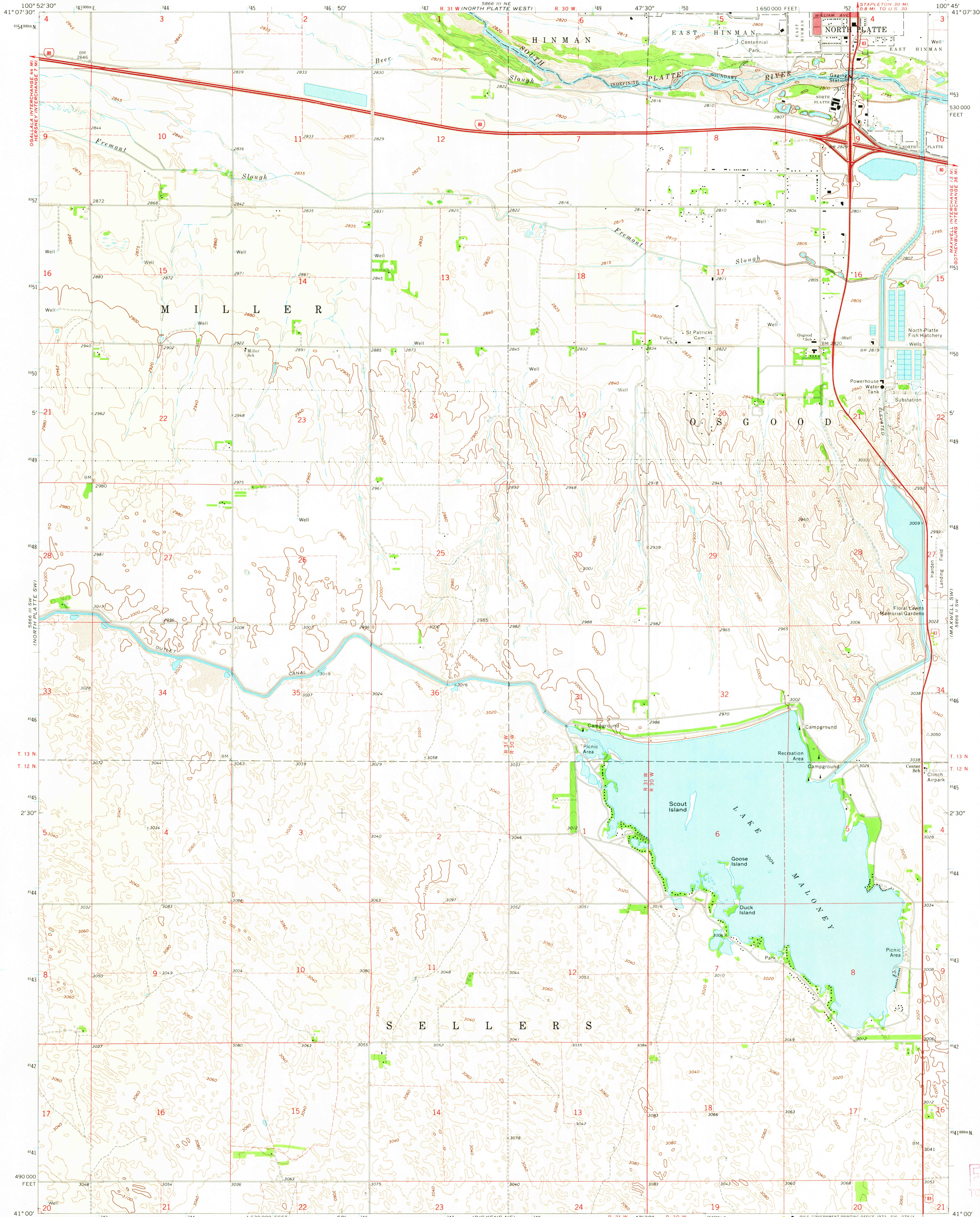
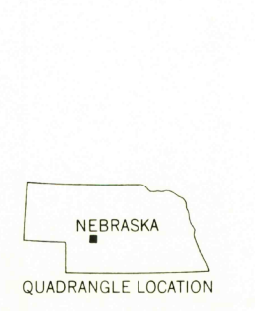
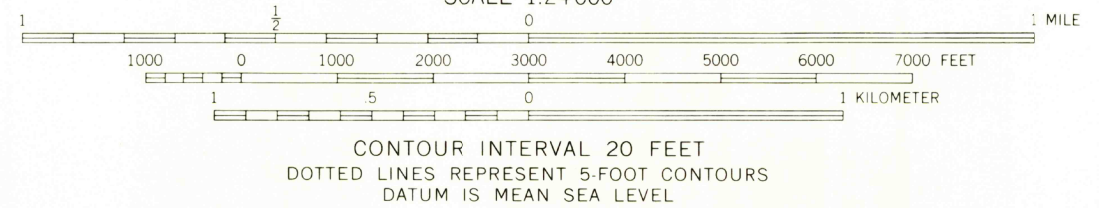
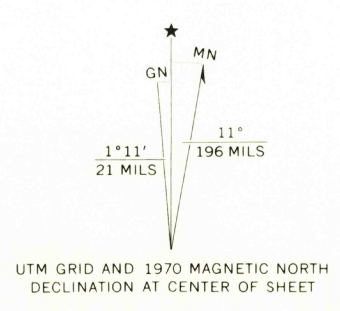


UNITED STATES  
DEPARTMENT OF THE INTERIOR  
GEOLOGICAL SURVEY

LAKE MALONEY QUADRANGLE  
NEBRASKA—LINCOLN CO.  
7.5 MINUTE SERIES (TOPOGRAPHIC)



Mapped, edited, and published by the Geological Survey as part of the Department of the Interior program for the development of the Missouri River Basin. Control by USGS and USC&GS. Topography by photogrammetric methods from aerial photographs taken 1969. Field checked 1970. Polyconic projection. 1927 North American datum 10,000-foot grid based on Nebraska coordinate system, south zone 1000-meter Universal Transverse Mercator grid ticks, zone 14, shown in blue. Red tint indicates area in which only landmark buildings are shown. Fine red dashed lines indicate selected fence and field lines where generally visible on aerial photographs. This information is unchecked.



ROAD CLASSIFICATION

Primary highway, hard surface	Light-duty road, hard or improved surface
Secondary highway, hard surface	Unimproved road
Interstate Route	U. S. Route
	State Route

THIS MAP COMPLIES WITH NATIONAL MAP ACCURACY STANDARDS  
FOR SALE BY U. S. GEOLOGICAL SURVEY, DENVER, COLORADO 80225, OR WASHINGTON, D. C. 20242  
A FOLDER DESCRIBING TOPOGRAPHIC MAPS AND SYMBOLS IS AVAILABLE ON REQUEST

LAKE MALONEY, NEBR.  
N4100—W10045/7.5  
1970

AMS 5866 III SE—SERIES V875

HISTORICAL  
U.S.G.S.  
5000000  
TOPOGRAPHIC DIVISION