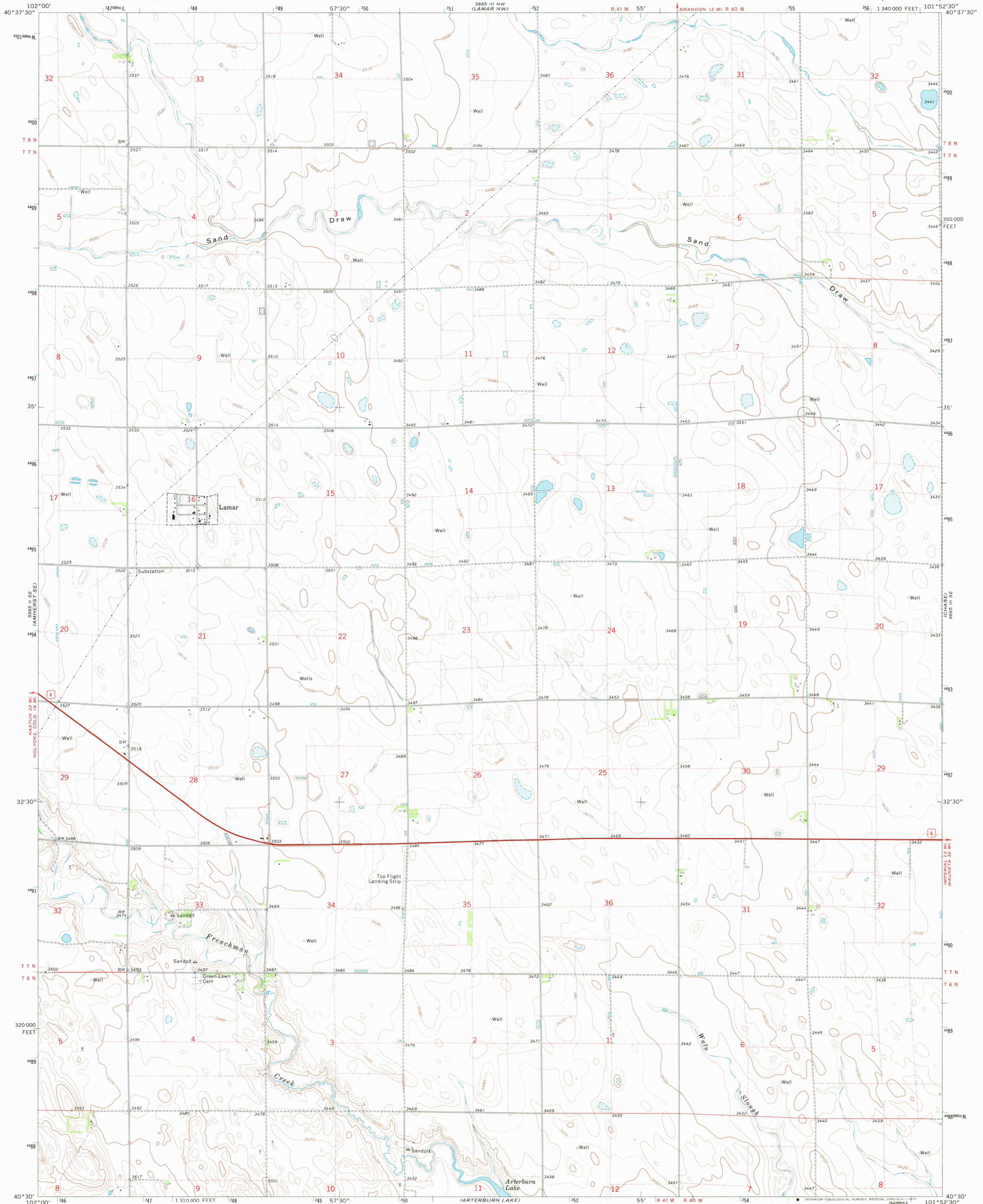


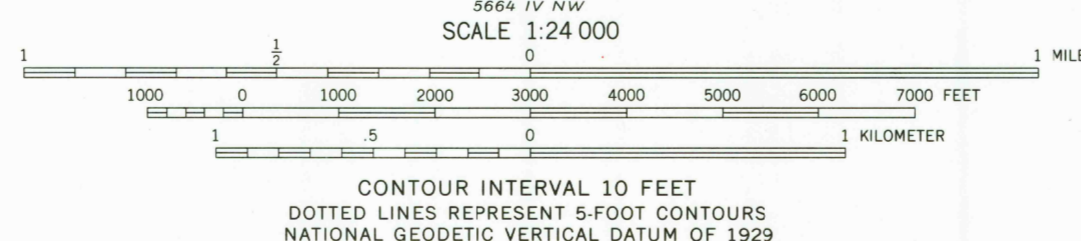
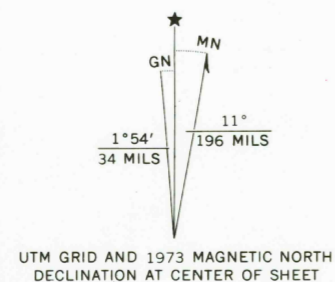
UNITED STATES  
DEPARTMENT OF THE INTERIOR  
GEOLOGICAL SURVEY

LAMAR QUADRANGLE  
NEBRASKA—CHASE CO.  
7.5 MINUTE SERIES (TOPOGRAPHIC)



Mapped, edited, and published by the Geological Survey

Control by USGS and NOS/NOAA  
Topography by photogrammetric methods from aerial photographs taken 1973. Field checked 1973  
Projection and 10,000-foot grid ticks: Nebraska coordinate system, south zone (Lambert conformal conic)  
1000-meter Universal Transverse Mercator grid ticks, zone 14, shown in blue. 1927 North American datum  
Fine red dashed lines indicate selected fence and field lines where generally visible on aerial photographs. This information is unchecked



ROAD CLASSIFICATION

Primary highway, hard surface	Light-duty road, hard or improved surface
Secondary highway, hard surface	Unimproved road
Interstate Route	U. S. Route
	State Route

THIS MAP COMPLIES WITH NATIONAL MAP ACCURACY STANDARDS  
FOR SALE BY U. S. GEOLOGICAL SURVEY, DENVER, COLORADO 80225, OR RESTON, VIRGINIA 22092  
A FOLDER DESCRIBING TOPOGRAPHIC MAPS AND SYMBOLS IS AVAILABLE ON REQUEST

USGS  
Historical File  
Topographic Division

LAMAR, NEBR.  
N4030-W10152.5/7.5

1973

AMS 5665 III SW—SERIES V875

3500  
JAN 13 1978