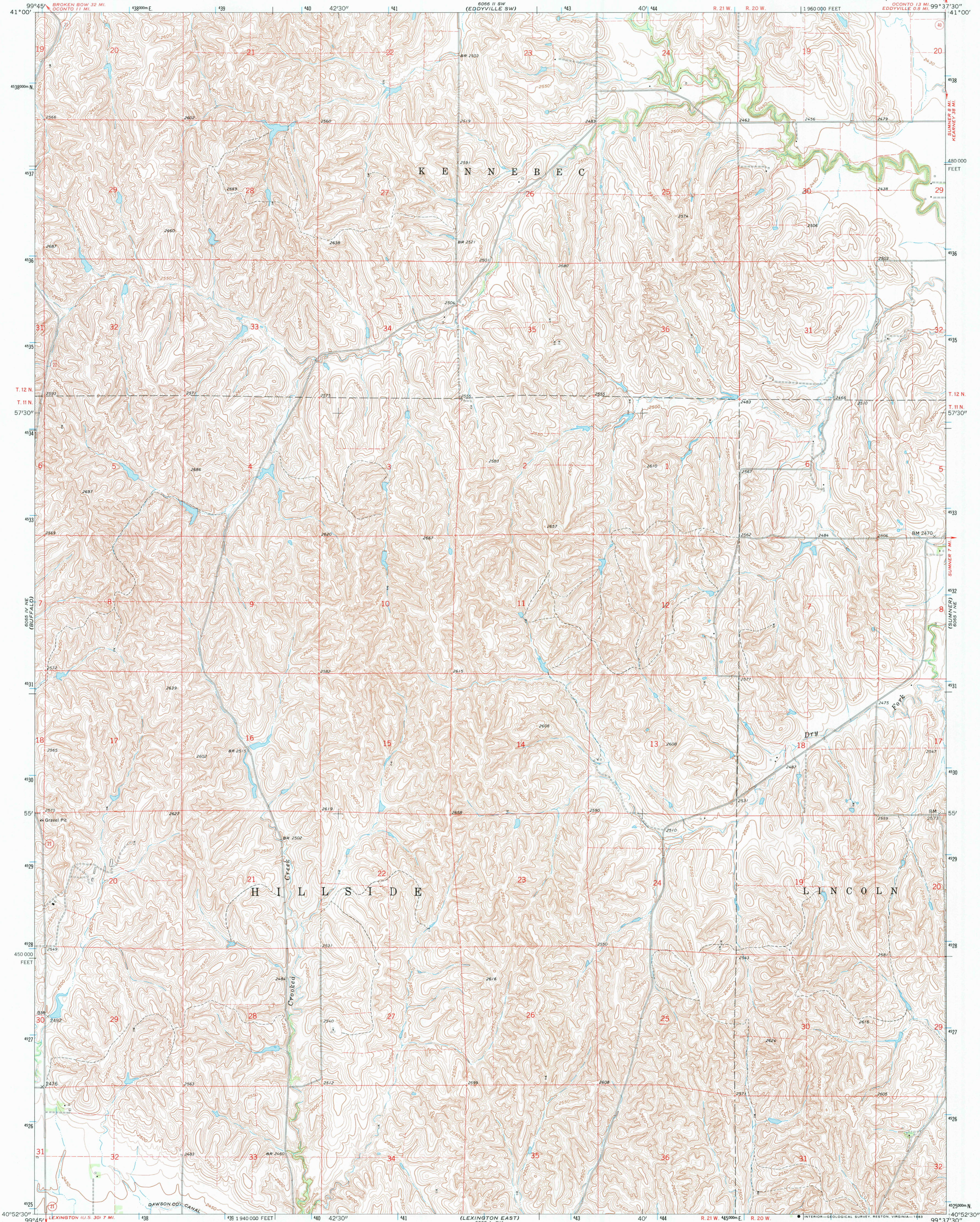


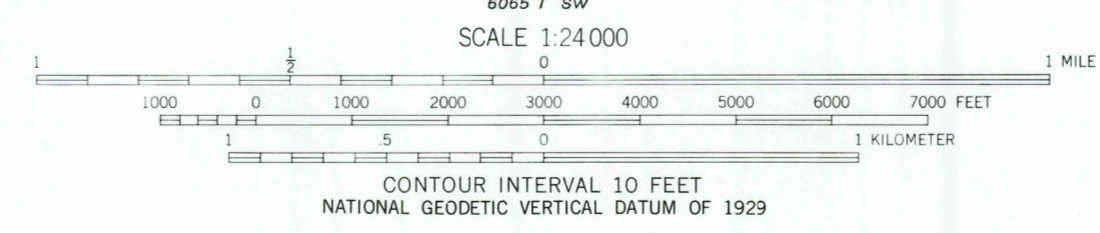
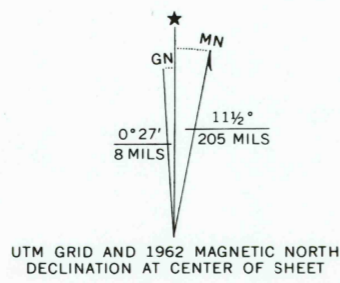
UNITED STATES
DEPARTMENT OF THE INTERIOR
GEOLOGICAL SURVEY

LEXINGTON NW QUADRANGLE
NEBRASKA—DAWSON CO.
7.5 MINUTE SERIES (TOPOGRAPHIC)



Mapped, edited, and published by the Geological Survey
Control by USGS and USC&GS

Topography by photogrammetric methods from aerial photographs taken 1960. Field checked 1962
Polyconic projection. 1927 North American datum
10,000-foot grid based on Nebraska coordinate system, south zone
1000-meter Universal Transverse Mercator grid ticks, zone 14, shown in blue
To place on the predicted North American Datum 1983, move the projection lines 5 meters north and 33 meters east as shown by dashed corner ticks
Fine red dashed lines indicate selected fence and field lines where generally visible on aerial photographs. This information is unchecked



ROAD CLASSIFICATION
Light-duty ——— Unimproved dirt - - - - -
State Route ○

THIS MAP COMPLIES WITH NATIONAL MAP ACCURACY STANDARDS
FOR SALE BY U. S. GEOLOGICAL SURVEY, DENVER, COLORADO 80225
OR RESTON, VIRGINIA 22092
A FOLDER DESCRIBING TOPOGRAPHIC MAPS AND SYMBOLS IS AVAILABLE ON REQUEST

LEXINGTON NW, NEBR.
N4052.5—W9937.5/7.5

RETURN TO:
USGS AND HISTORICAL MAP ARCHIVES

1962
AMS 6065 1 NW-SERIES V875

MAR 20 1984