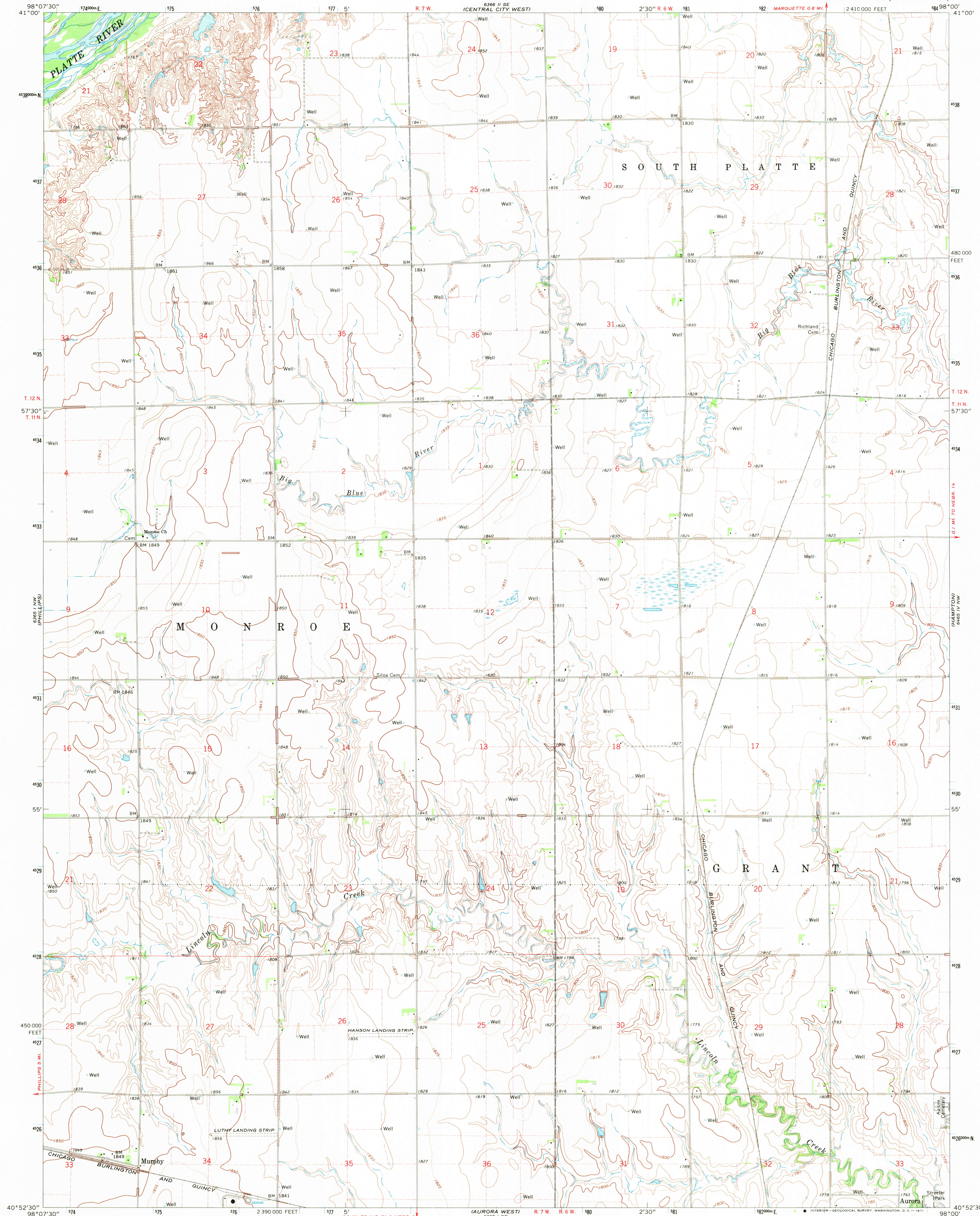


UNITED STATES
DEPARTMENT OF THE INTERIOR
GEOLOGICAL SURVEY

MURPHY QUADRANGLE
NEBRASKA—HAMILTON CO.
7.5 MINUTE SERIES (TOPOGRAPHIC)



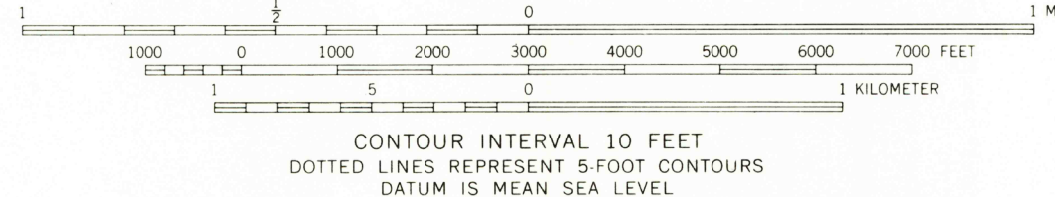
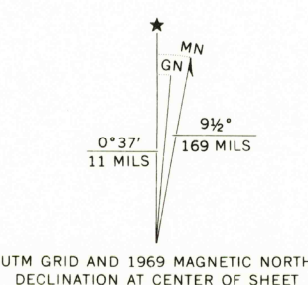
Mapped, edited, and published by the Geological Survey

Control by USGS and USC&GS

Topography by photogrammetric methods from aerial
photographs taken 1964. Field checked 1969

Polyconic projection. 1927 North American datum
10,000-foot grid based on Nebraska coordinate system, south zone
1000-meter Universal Transverse Mercator grid ticks,
zone 14, shown in blue

Fine red dashed lines indicate selected fence and field lines where
generally visible on aerial photographs. This information is unchecked



THIS MAP COMPLIES WITH NATIONAL MAP ACCURACY STANDARDS
FOR SALE BY U. S. GEOLOGICAL SURVEY, DENVER, COLORADO 80225, OR WASHINGTON, D. C. 20242
A FOLDER DESCRIBING TOPOGRAPHIC MAPS AND SYMBOLS IS AVAILABLE ON REQUEST

ROAD CLASSIFICATION
Light-duty road, all weather, Unimproved road, fair or dry weather
improved surface.



U.S.G.S.
FINE COPY
TOPOGRAPHIC DIVISION

MURPHY, NEBR.
N4052.5—W9800/7.5

1969

AMS 6365 1 NE—SERIES V875

JUN 23 1971