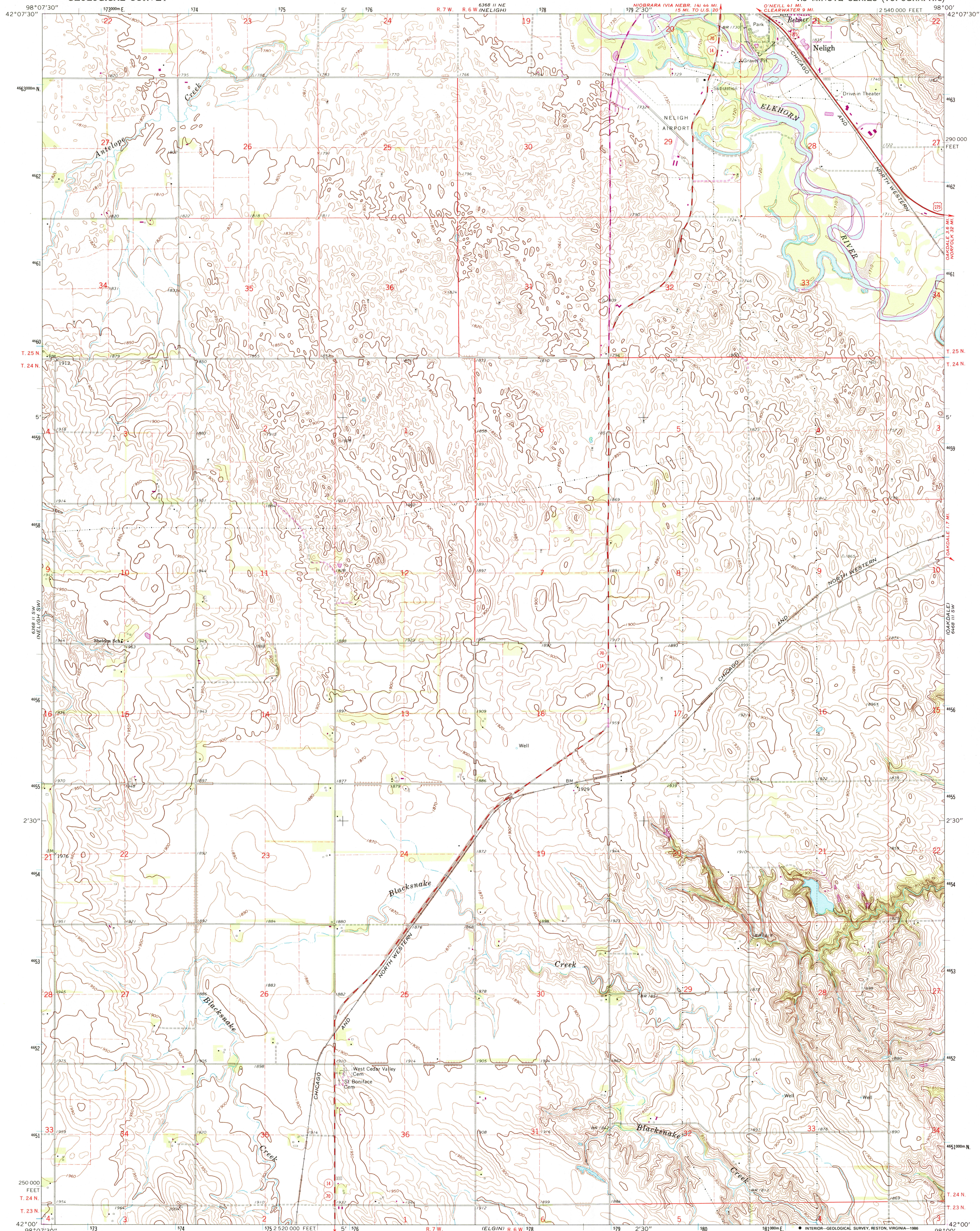
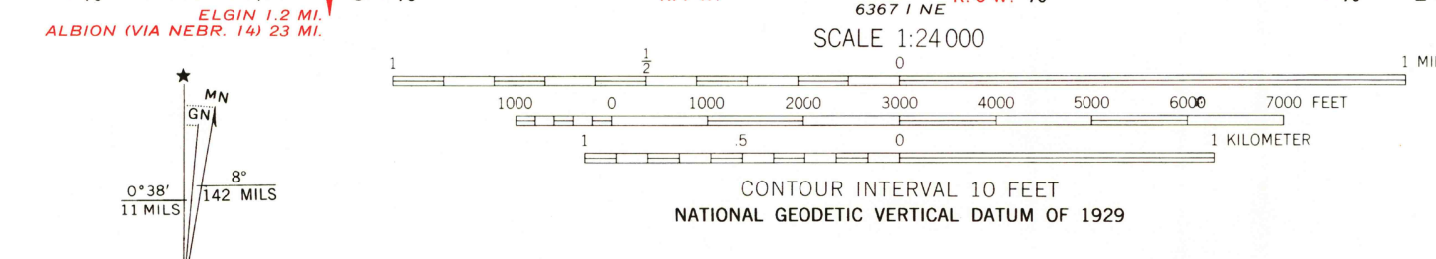


UNITED STATES
DEPARTMENT OF THE INTERIOR
GEOLOGICAL SURVEY

NELIGH SE QUADRANGLE
NEBRASKA—ANTELOPE CO.
7.5 MINUTE SERIES (TOPOGRAPHIC)



Mapped, edited, and published by the Geological Survey as part of the Department of the Interior program for the development of the Missouri River Basin Control by USGS, USC&GS, and U. S. Bureau of Reclamation
Topography by photogrammetric methods from aerial photographs taken 1961. Field checked 1963
Polyconic projection. 1927 North American datum 10,000-foot grid based on Nebraska coordinate system, north zone 1000-meter Universal Transverse Mercator grid ticks, zone 14, shown in blue
To place on the predicted North American Datum 1983, move the projection lines 5 meters north and 29 meters east as shown by dashed corner ticks
Revisions shown in purple and woodland compiled from aerial photographs taken 1984 and other sources
This information not field checked. Map edited 1986



ROAD CLASSIFICATION

Primary highway, hard surface	Light-duty road, hard or improved surface
Secondary highway, hard surface	Unimproved road
Interstate Route	U. S. Route
	State Route

THIS MAP COMPLIES WITH NATIONAL MAP ACCURACY STANDARDS
FOR SALE BY U. S. GEOLOGICAL SURVEY, RESTON, VIRGINIA 22092
A FOLDER DESCRIBING TOPOGRAPHIC MAPS AND SYMBOLS IS AVAILABLE ON REQUEST

NELIGH SE, NEBR.
42098-A1-TF-024
1963
PHOTOREVISED 1986
DMA 6368 II SE-SERIES V875

