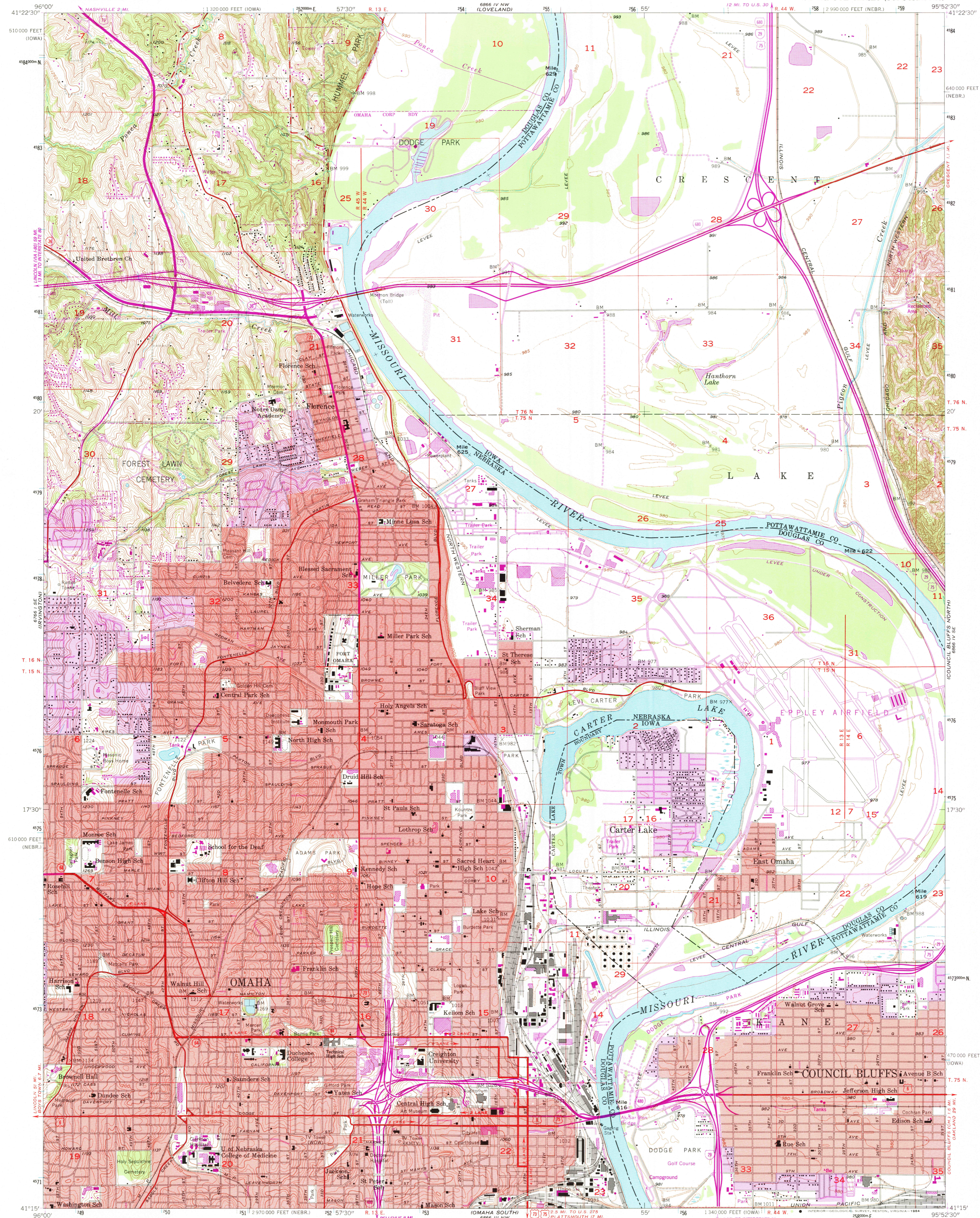


UNITED STATES  
DEPARTMENT OF THE INTERIOR  
GEOLOGICAL SURVEY

OMAHA NORTH QUADRANGLE  
NEBRASKA—IOWA  
7.5 MINUTE SERIES (TOPOGRAPHIC)



Mapped, edited, and published by the Geological Survey

Control by USGS and USC&GS

Topography from aerial photographs by Kelsh plotter and by planetable surveys 1956. Aerial photographs taken 1952

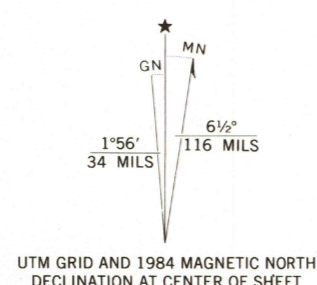
Polyconic projection. 1927 North American datum

10,000-foot grids based on Nebraska coordinate system, south zone, and Iowa coordinate system, south zone

1000-meter Universal Transverse Mercator grid ticks, zone 15, shown in blue

Red tint indicates areas in which only landmark buildings are shown

To place on the predicted North American Datum 1983, move the projection lines 4 meters north and 24 meters east as shown by dashed corner ticks



SCALE 1:24 000  
CONTOUR INTERVAL 10 FEET  
DOTTED LINES REPRESENT 5-FOOT CONTOURS  
NATIONAL GEODETIC VERTICAL DATUM OF 1929

THIS MAP COMPLIES WITH NATIONAL MAP ACCURACY STANDARDS  
FOR SALE BY U.S. GEOLOGICAL SURVEY, DENVER, COLORADO 80225, OR RESTON, VIRGINIA 22092  
AND IOWA GEOLOGICAL SURVEY, IOWA CITY, IOWA 52240  
A FOLDER DESCRIBING TOPOGRAPHIC MAPS AND SYMBOLS IS AVAILABLE ON REQUEST

ROAD CLASSIFICATION  
Heavy-duty ——— Light-duty ———  
Medium-duty ——— Unimproved dirt ———  
U. S. Route ——— State Route ———  
Interstate Route ———



OMAHA NORTH, NEBR.—IOWA

N4115—W9552.5/7.5

1956

PHOTOREVISED 1984

DMA 6866 IV SW—SERIES V875

Revisions shown in purple compiled from aerial photographs taken 1982 and other sources  
This information not field checked. Map edited 1984  
Purple tint indicates extension of urban area

RETURN TO:  
USGS AND HISTORICAL MAP ARCHIVE