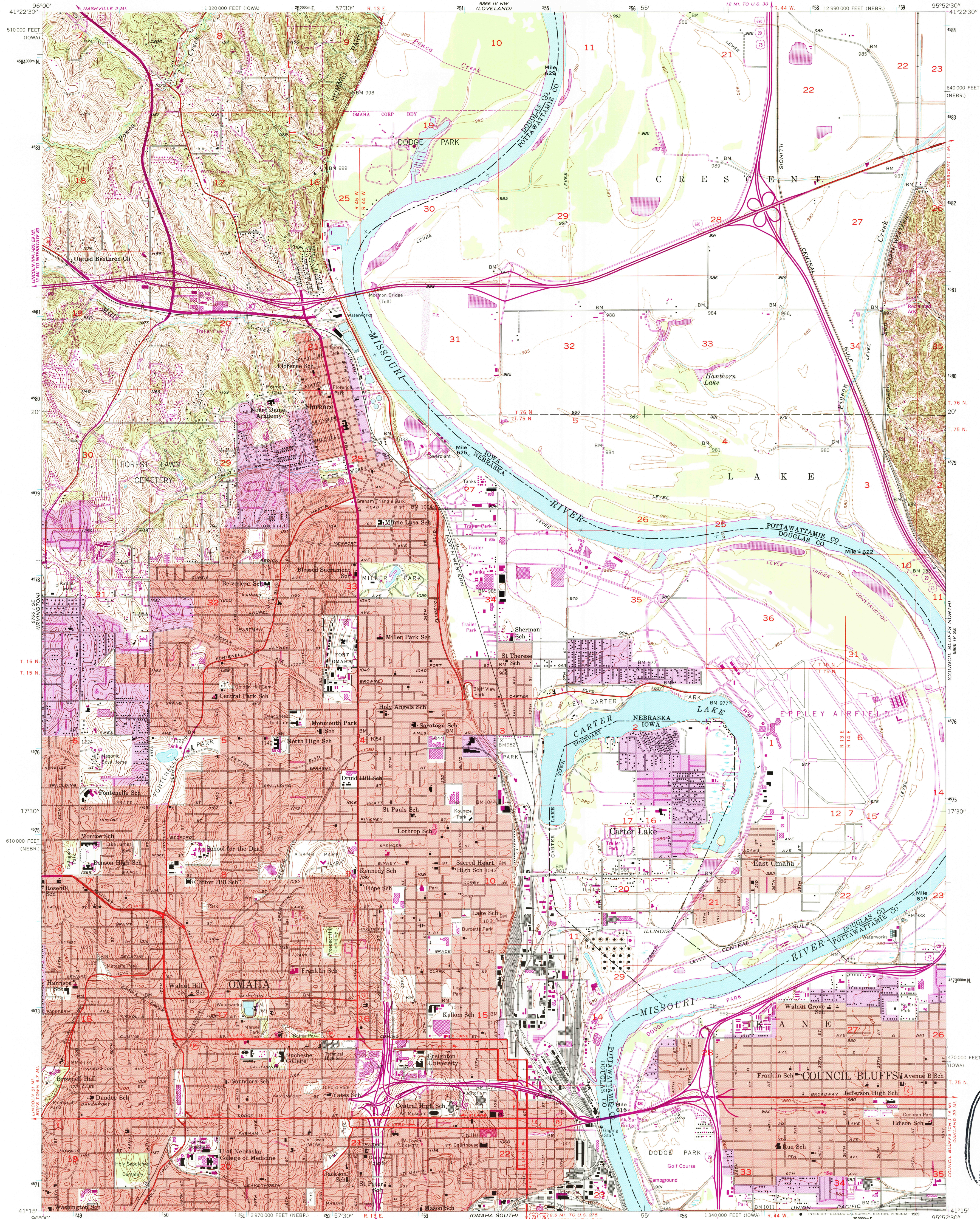
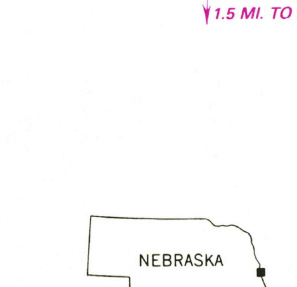
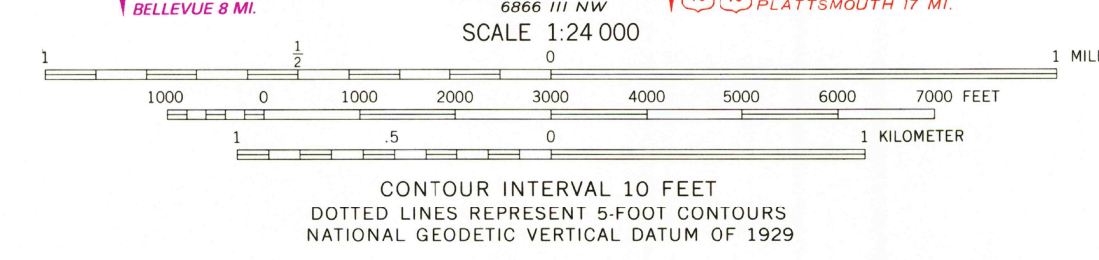
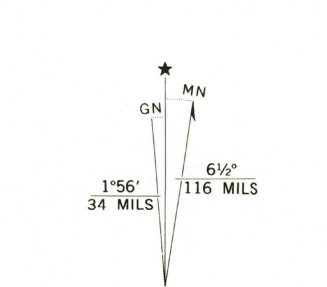


UNITED STATES
DEPARTMENT OF THE INTERIOR
GEOLOGICAL SURVEY

OMAHA NORTH QUADRANGLE
NEBRASKA—IOWA
7.5 MINUTE SERIES (TOPOGRAPHIC)



Maped, edited, and published by the Geological Survey
Control by USGS and USC&GS
Topography from aerial photographs by Kelsh plotter
and by planetable surveys 1956. Aerial photographs taken 1952
Polyconic projection. 1927 North American datum
10,000-foot grid based on Nebraska coordinate system,
south zone, and Iowa coordinate system, south zone
1000-meter Universal Transverse Mercator grid ticks,
zone 15, shown in blue
Red tint indicates areas in which only landmark buildings are shown
To place on the predicted North American Datum 1983,
move the projection lines 4 meters north and
24 meters east as shown by dashed corner ticks



ROAD CLASSIFICATION
Heavy-duty ——— Light-duty ———
Medium-duty ——— Unimproved dirt ———
U.S. Route ——— State Route ———
Interstate Route ———

OMAHA NORTH, NEBR.—IOWA
41095-C8-TF-024
1956
PHOTOREVISED 1984
DMA 6866 IV SW—SERIES 8785

THIS MAP COMPLIES WITH NATIONAL MAP ACCURACY STANDARDS
FOR SALE BY U.S. GEOLOGICAL SURVEY, DENVER, COLORADO 80225, OR RESTON, VIRGINIA 22092
AND IOWA GEOLOGICAL SURVEY, IOWA CITY, IOWA 52240
A FOLDER DESCRIBING TOPOGRAPHIC MAPS AND SYMBOLS IS AVAILABLE ON REQUEST

USGS MAP HISTORICAL MAP
FEB 02 1989
REC'D FILE COPY