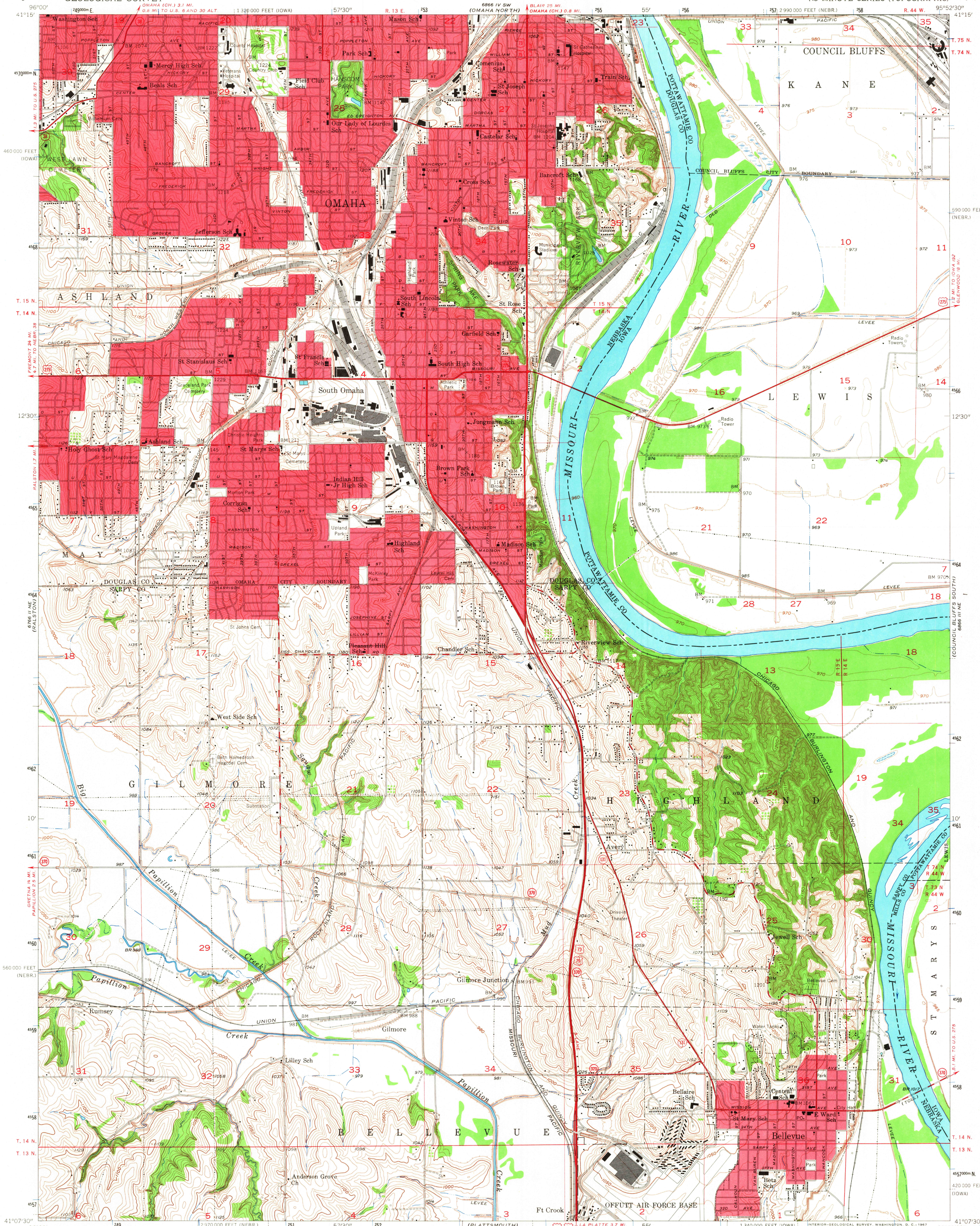


UNITED STATES  
DEPARTMENT OF THE INTERIOR  
GEOLOGICAL SURVEY

OMAHA SOUTH QUADRANGLE  
NEBRASKA—IOWA  
7.5 MINUTE SERIES (TOPOGRAPHIC)



Mapped, edited, and published by the Geological Survey

Control by USGS and USC&GS

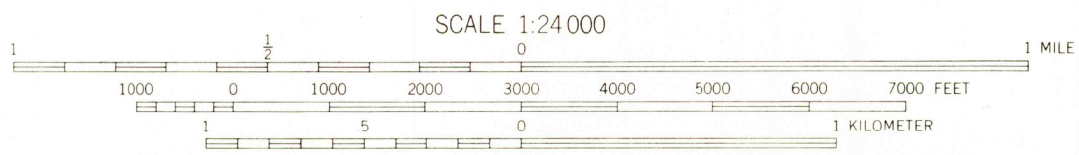
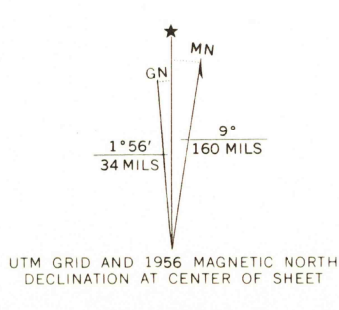
Topography from aerial photographs by photogrammetric methods and by plane-table surveys 1956. Aerial photographs taken 1952

Polyconic projection. 1927 North American datum

10,000-foot grids based on Nebraska coordinate system, south zone, and Iowa coordinate system, south zone

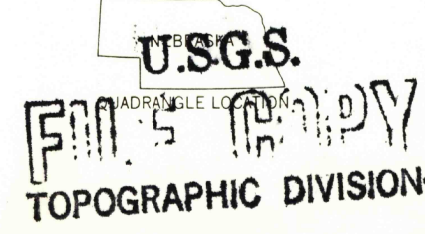
1000-meter Universal Transverse Mercator grid ticks, zone 15, shown in blue

Red tint indicates areas in which only landmark buildings are shown



CONTOUR INTERVAL 10 FEET  
DOTTED LINES REPRESENT 5-FOOT CONTOURS  
DATUM IS MEAN SEA LEVEL

THIS MAP COMPLIES WITH NATIONAL MAP ACCURACY STANDARDS  
FOR SALE BY U.S. GEOLOGICAL SURVEY, DENVER, COLORADO 80225, OR WASHINGTON, D. C. 20242  
AND BY THE IOWA GEOLOGICAL SURVEY, IOWA CITY, IOWA 52240  
A FOLDER DESCRIBING TOPOGRAPHIC MAPS AND SYMBOLS IS AVAILABLE ON REQUEST



ROAD CLASSIFICATION

Heavy-duty	Light-duty
Medium-duty	Unimproved dirt
U.S. Route	State Route

OMAHA SOUTH, NEBR.—IOWA  
N 4107.50"—W 9552.57.5

1956

AMS 6866 III NW—SERIES V875

Historic File  
Topographic Division

5045