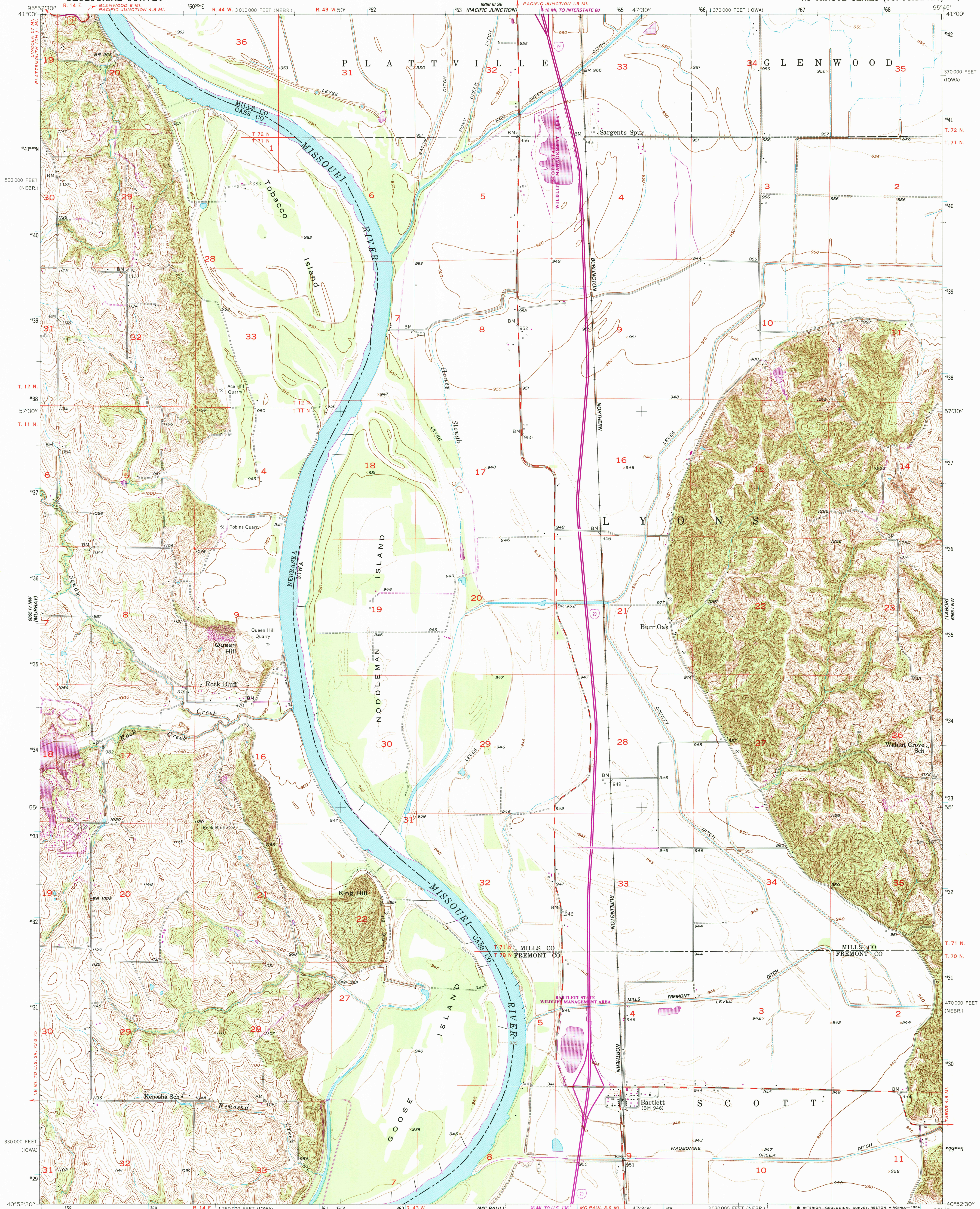
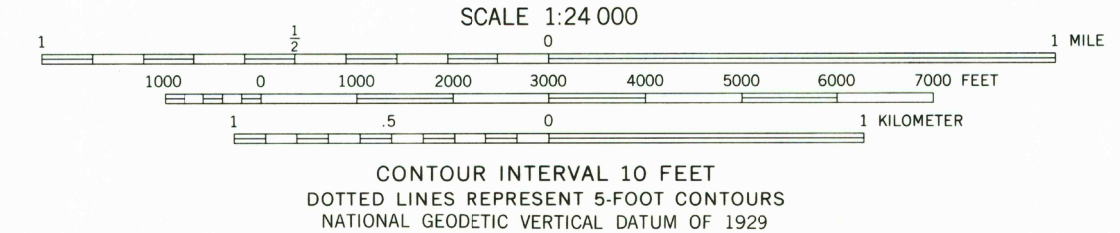
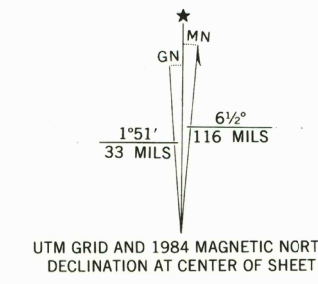


UNITED STATES
DEPARTMENT OF THE INTERIOR
GEOLOGICAL SURVEY

ROCK BLUFF QUADRANGLE
NEBRASKA-IOWA
7.5 MINUTE SERIES (TOPOGRAPHIC)



Mapped, edited, and published by the Geological Survey
Control by USGS and USC&GS
Topography from aerial photographs by Kelsh plotter and by planetable surveys 1956. Aerial photographs taken 1955
Polyconic projection. 1927 North American datum 10,000-foot grids based on Iowa coordinate system, south zone, and Nebraska coordinate system, south zone 1,000-meter Universal Transverse Mercator grid ticks, zone 15, shown in blue
To place on the predicted North American Datum 1983, move the projection lines 4 meters north and 23 meters east as shown by dashed corner ticks
There may be private inholdings within the boundaries of the National or State reservations shown on this map



ROAD CLASSIFICATION

Primary highway, hard surface	Light-duty road, hard or improved surface
Secondary highway, hard surface	Unimproved road
Interstate Route	U.S. Route
	State Route

THIS MAP COMPLIES WITH NATIONAL MAP ACCURACY STANDARDS FOR SALE BY U.S. GEOLOGICAL SURVEY, DENVER, COLORADO 80225, OR RESTON, VIRGINIA 22092 AND IOWA GEOLOGICAL SURVEY, IOWA CITY, IOWA 52242
A FOLDER DESCRIBING TOPOGRAPHIC MAPS AND SYMBOLS IS AVAILABLE ON REQUEST

Revisions shown in purple compiled from aerial photographs taken 1982 and other sources
This information not field checked. Map edited 1984

ROCK BLUFF, NEBR.-IOWA
40095-H7-TF-024
1956
PHOTOREVISED 1984
DMA 6665 IV NE-SERIES V875

RETURN TO:
USGS AND HISTORICAL MAP ARCHIVES