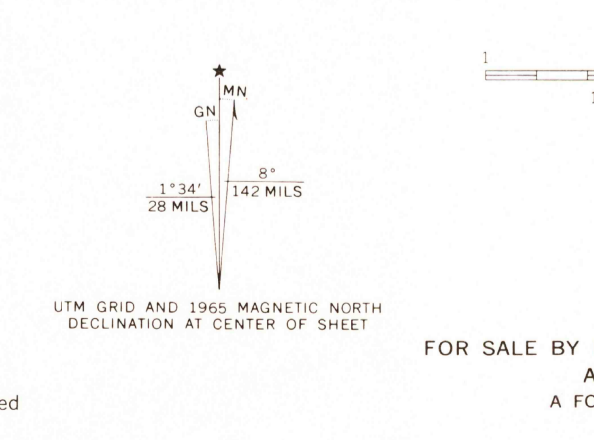




Mapped, edited, and published by the Geological Survey as part of the Department of the Interior program for the development of the Missouri River Basin Control by USGS and USC&GS
Topography by photogrammetric methods from aerial photographs taken 1963 and planetable surveys 1965
Polyconic projection. 1927 North American datum 10,000-foot grids based on Nebraska coordinate system, south zone and Missouri coordinate system, west zone
1000-meter Universal Transverse Mercator grid ticks, zone 15, shown in blue
Fine red dashed lines indicate selected fence and field lines where generally visible on aerial photographs. This information is unchecked



THIS MAP COMPLIES WITH NATIONAL MAP ACCURACY STANDARDS
FOR SALE BY U.S. GEOLOGICAL SURVEY, DENVER, COLORADO 80225, OR WASHINGTON, D. C. 20242
AND BY THE MISSOURI GEOLOGICAL SURVEY, ROLLA, MISSOURI 65401
A FOLDER DESCRIBING TOPOGRAPHIC MAPS AND SYMBOLS IS AVAILABLE ON REQUEST

ROAD CLASSIFICATION
Medium-duty — Light-duty
Unimproved dirt —
U.S. Route — State Route

USGS
TOPOGRAPHIC DIVISION

RULO, NEBR.—MO.
SW/4 CRAIG 15' QUADRANGLE
N4000—W9522.5/7.5
1965
AMS 6964 III SW—SERIES V875

3215
FEB 1 1967