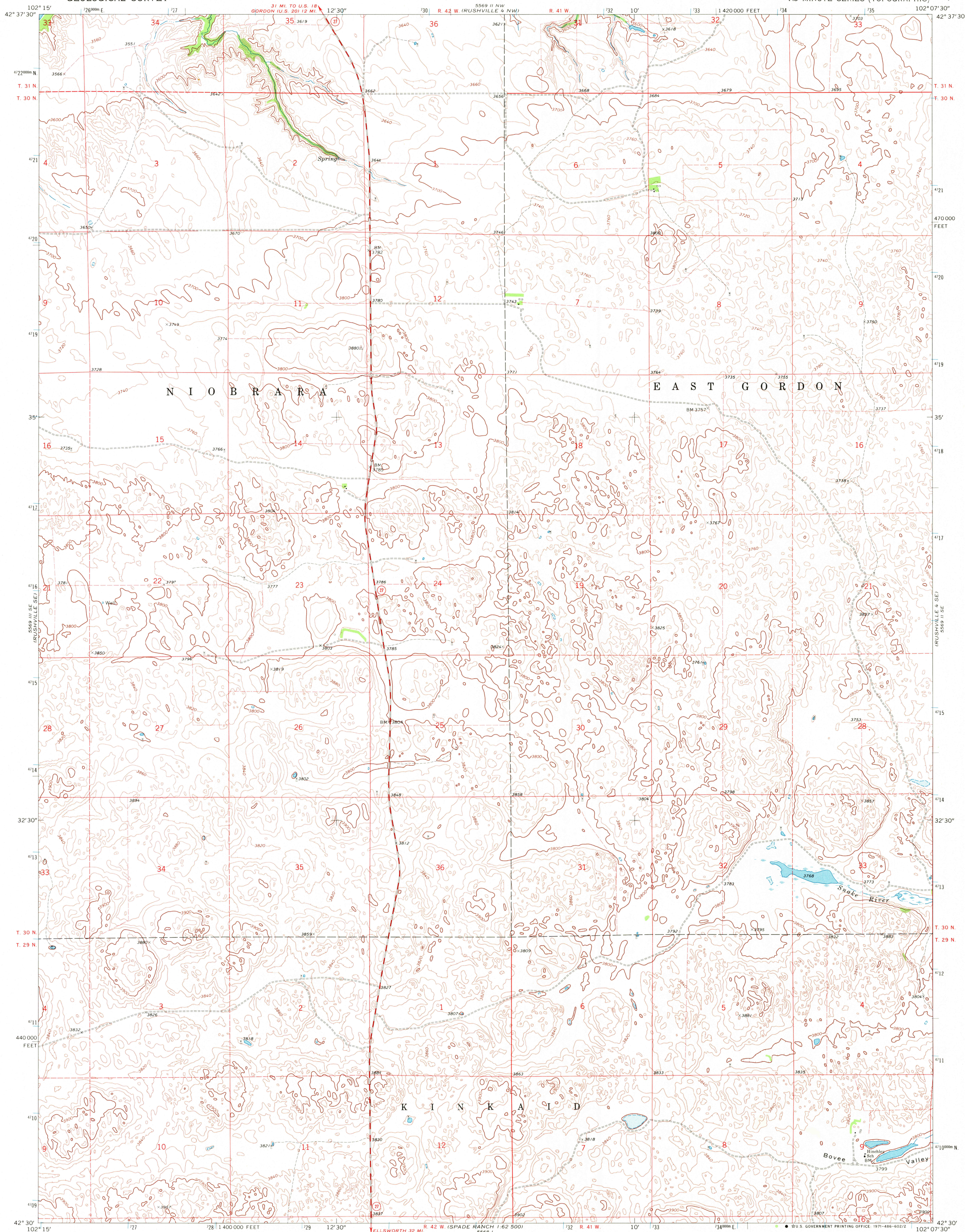
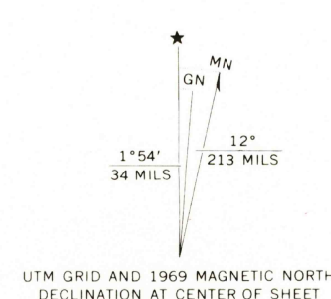


UNITED STATES
DEPARTMENT OF THE INTERIOR
GEOLOGICAL SURVEY

RUSHVILLE 4 SW QUADRANGLE
NEBRASKA-SHERIDAN CO.
7.5 MINUTE SERIES (TOPOGRAPHIC)



Mapped, edited, and published by the Geological Survey
as part of the Department of the Interior program
for the development of the Missouri River Basin
Control by USGS and USC&GS
Topography by photogrammetric methods from aerial
photographs taken 1968. Field checked 1969
Polyconic projection. 1927 North American datum
10,000-foot grid based on Nebraska coordinate system, north zone
1000-meter Universal Transverse Mercator grid ticks,
zone 13, shown in blue
Fine red dashed lines indicate selected fence and field lines where
generally visible on aerial photographs. This information is unchecked



SCALE 1:24,000
CONTOUR INTERVAL 20 FEET
DATUM IS MEAN SEA LEVEL



ROAD CLASSIFICATION
Secondary highway, all weather. Light-duty road, all weather,
hard surface. Unimproved road, fair or dry
weather. State Route

RUSHVILLE 4 SW, NEBR.
N4230-W10207.5/7.5

1969
AMS 5569 11 SW - SERIES V875

USGS
HISTORICAL FILE
TOPOGRAPHIC DIVISION

JAN 12 1972