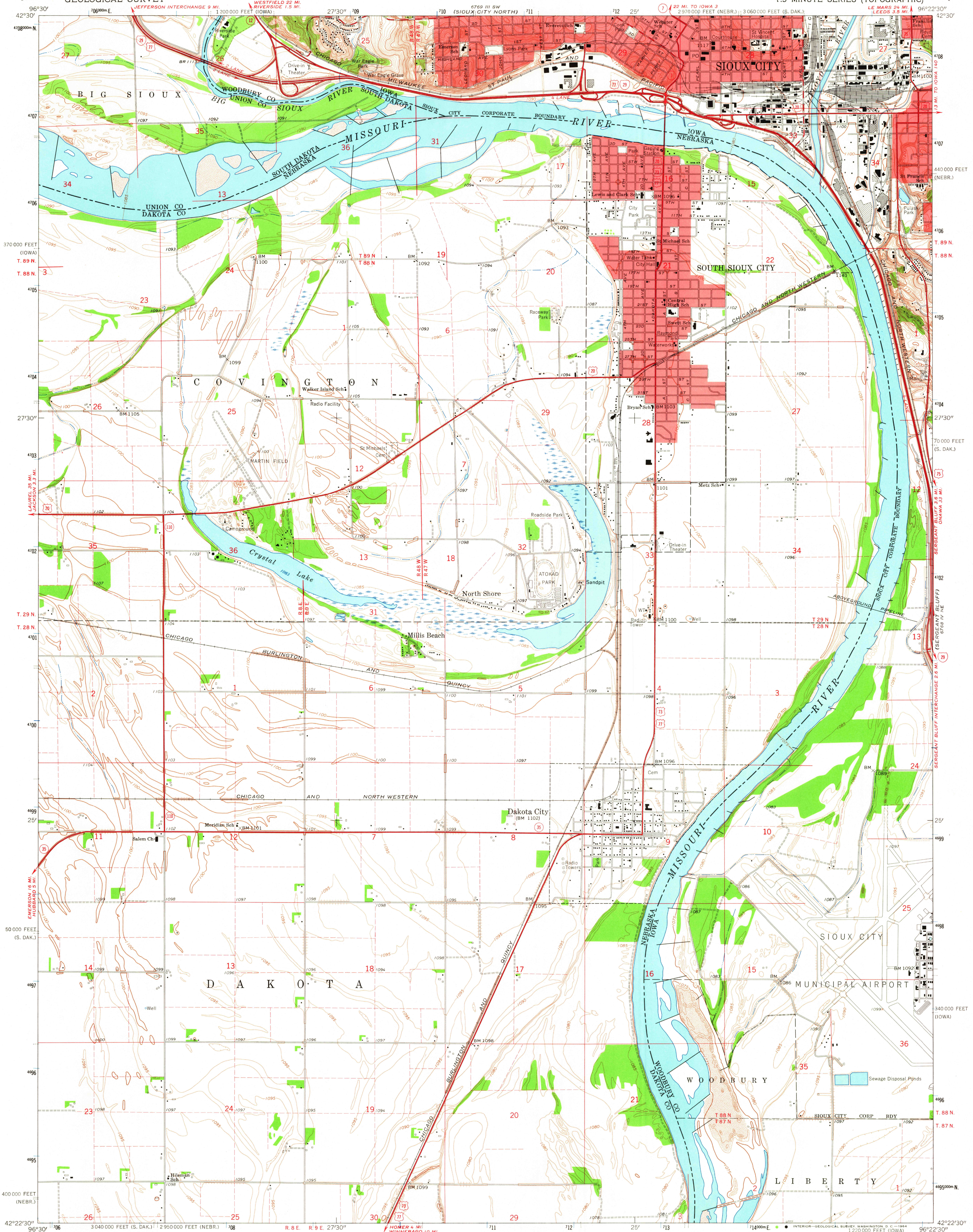
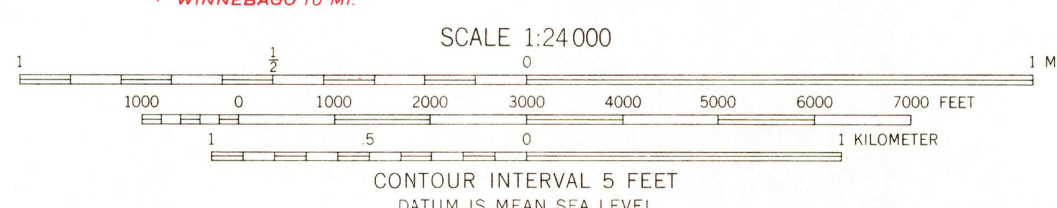
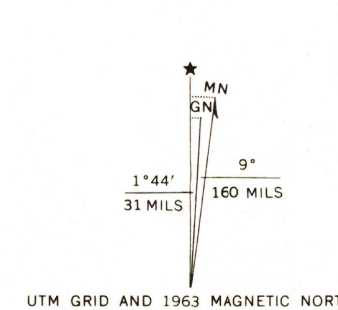


UNITED STATES
DEPARTMENT OF THE INTERIOR
GEOLOGICAL SURVEY

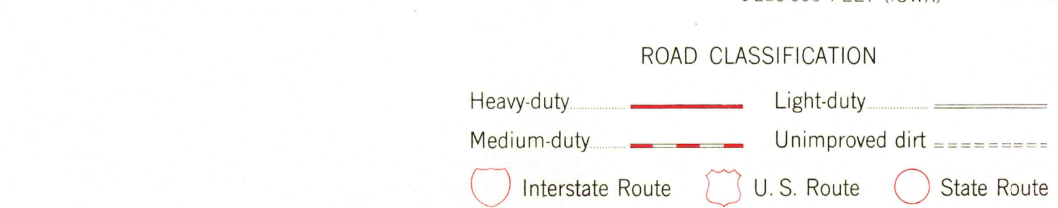
SIoux CITY SOUTH QUADRANGLE
NEBRASKA-IOWA-SOUTH DAKOTA
7.5 MINUTE SERIES (TOPOGRAPHIC)



Maped, edited, and published by the Geological Survey
Control by USGS, USC&GS, and USCE
Planimetry by photogrammetric methods from aerial photographs
taken 1961. Topography by planetable surveys 1963
Polyconic projection. 1927 North American datum
10,000-foot grids based on Nebraska coordinate system, north zone,
Iowa coordinate system, north zone, and South Dakota coordinate system,
south zone
1000-meter Universal Transverse Mercator grid ticks,
zone 14, shown in blue
Red tint indicates areas in which only landmark buildings are shown
Fine red dashed lines indicate selected fence and field lines where
generally visible on aerial photographs. This information is unchecked



THIS MAP COMPLIES WITH NATIONAL MAP ACCURACY STANDARDS
FOR SALE BY U. S. GEOLOGICAL SURVEY, DENVER 25, COLORADO OR WASHINGTON 25, D. C.
AND BY THE IOWA GEOLOGICAL SURVEY, IOWA CITY, IOWA
A FOLDER DESCRIBING TOPOGRAPHIC MAPS AND SYMBOLS IS AVAILABLE ON REQUEST



SIoux CITY SOUTH, NEBR.-IOWA-S. DAK.
N4222.5-W9622.5/7.5
1963
AMS 6768 IV NW-SERIES V875

USCS
Historical File
Topographic Division

NOV 24 1964